



BOLTON GARDENS, EARLS COURT, SW5
£5,000 per month*

Carter Jonas

BOLTON GARDENS, SW5

- 2 Bedrooms
- 2 Bath or shower rooms
- 3rd & 4th floor duplex
- Lift
- Furnished
- Communal gardens
- Closest underground station: Earls Court

An impressive, modern two bedroom maisonette situated on the 3rd and 4th floors (without lift) of this period building on the Chelsea/Earls Court borders in Bolton Gardens. EPC rating: D

Reception/dining room, separate kitchen, main bedroom with en-suite bathroom, 2nd small double bedroom with dressing room (n.b. there is restricted height on the 4th floor in places), shower room. Furnished. Communal gardens.

n.b. pets are not permitted

Holding deposit is 1 week's rent

Security deposit is 6 week's rent

Minimum term 12 months

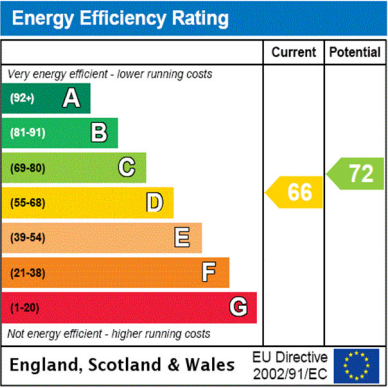
Royal Borough of Kensington & Chelsea - Council tax band: F

For the latest information on broadband and mobile coverage, please visit Ofcom's website <https://checker.ofcom.org.uk/en-gb/broadband-coverage>.

For eligibility for resident parking permits, please refer to the RBKC website <https://www.rbkc.gov.uk/parking-transport-and-streets/visitor-parking-and-pay-phone/guide-parking> for further details.

An impressive, modern two bedroom maisonette situated on the 3rd and 4th floors (without lift) of this period building on the Chelsea/Earls Court borders. EPC rating: D





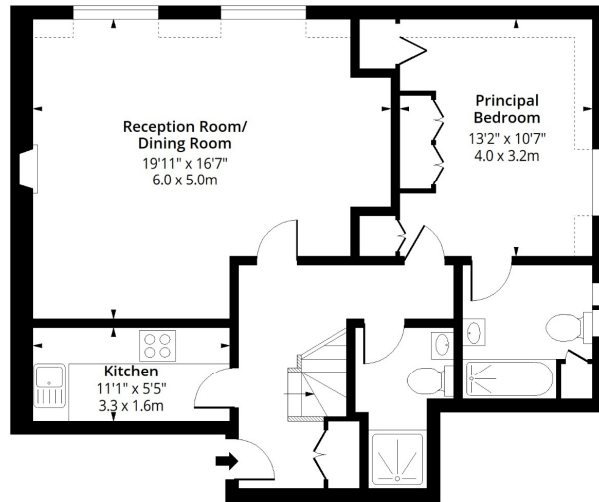
ADDITIONAL INFORMATION

Offers	Available for a minimum term of 12 months longer terms will be considered
Viewing	Strictly by appointment
Local Authority	RBKC - Council Tax Band F

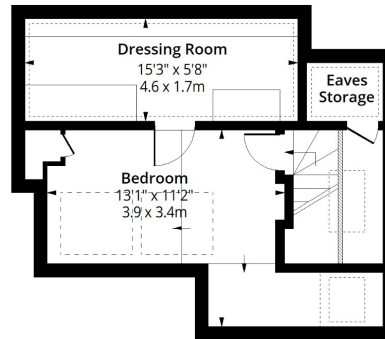


Bolton Gardens, SW5

Approx. Gross Internal Area 909 Sq Ft - 84.45 Sq M
Approx. Gross Eaves Storage/ Dressing Area 103 Sq Ft - 9.57 Sq M



Third Floor
Floor Area 731 Sq Ft - 67.91 Sq M



Fourth Floor
Floor Area 178 Sq Ft - 16.54 Sq M



Measured according to RICS IPMS2. Floor plan is for illustrative purposes only and is not to scale. Every attempt has been made to ensure the accuracy of the floor plan shown, however all measurements, fixtures, fittings and data shown are an approximate interpretation for illustrative purposes only. 1 sq m = 10.76 sq feet.

lpaplus.com



T: 020 7584 7020

25-27 Harrington Road, London, SW7 3EU

E: chelsea@carterjonas.co.uk



Exclusive UK affiliate of

CHRISTIE'S
INTERNATIONAL REAL ESTATE

Classification L2 - Business Data

IMPORTANT INFORMATION

These particulars are for general information purposes only and do not represent an offer or contract or part of one. Carter Jonas or anyone in their employment has made every attempt to ensure that the particulars and other information provided are as accurate as possible and they are not intended to amount to advice on which you should rely as being factually accurate. Full information which may be relevant to your decision regarding the property can be found on the property listing on carterjonas.co.uk or a separately available material information sheet, and we would advise you to confirm the details of any material information prior to any offer being submitted. You should not assume that the property has all necessary planning, building regulations or other consents and Carter Jonas has not tested any services, facilities, or equipment. Any measurements and distances given are approximate only. Where Carter Jonas has been provided with a floorplan by a third party, we cannot guarantee that the floorplan has been measured in accordance with IPMS. Purchasers or prospective tenants must satisfy themselves of all of the aforementioned by independent inspection or otherwise. Our images only represent part of the property as it appeared at the time they were taken and do not represent the furnishings included; these are confirmed in a separate inventory. If you require further information, please contact us. *Administration fees may apply depending on tenancy type. Please contact your local branch for this information.