



**SOUTH MOLTON STREET, MAYFAIR, W1K**  
£15,000 per month\*

**Carter Jonas**

---

## APARTMENT 2 MEAD COURT, SOUTH MOLTON STREET, MAYFAIR, LONDON, W1K

- Air Conditioning
- 2 Private Terraces
- 3 Bedrooms
- 2 Luxury Bathrooms
- Guest WC
- Light and Bright

### THE PROPERTY

An incredible apartment offering an unparalleled finish. Unfolding over three floors, the first comprising a vast open-plan reception room, dining room and kitchen, guest WC and entrance hallway. Stairs lead up to the second floor which is an incredibly spacious principal bedroom suite, with marble bathroom and large walk-in closet and dressing room, and access to the large private terrace. Above this on the top floor are two spacious double bedrooms and a large luxurious family bathroom, with the larger of the two bedrooms providing access to a further private roof terrace. Furnished to the highest specification, the apartment further benefits from air conditioning throughout.

Mayfair is London's most fashionable destination. With London's finest buildings, largest concentration of luxury hotels, best restaurants, bars, shopping, open spaces and hidden treasures all nestled together in a beautiful village setting.

A stunning three bedroom triplex penthouse apartment with two terraces of approximately 1,884 square feet.





ADDITIONAL INFORMATION

Offers Available for a minimum term of 12 months longer terms will be considered

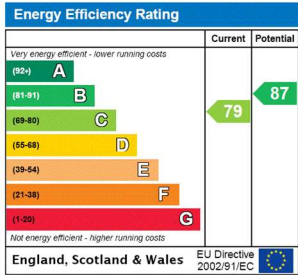
Viewing Strictly by appointment

Local Authority Westminster City Council - Council Tax Band G

Nearest Tube: Bond Street  
Minimum Term 12 months  
Standard broadband and mobile coverage available  
Mains electric and water - warm air and air pump heat source for heating  
NHA

The deposit will be £20,769.24 at a rental value of £3,461.54 pw / £15,000 pcm (asking price)

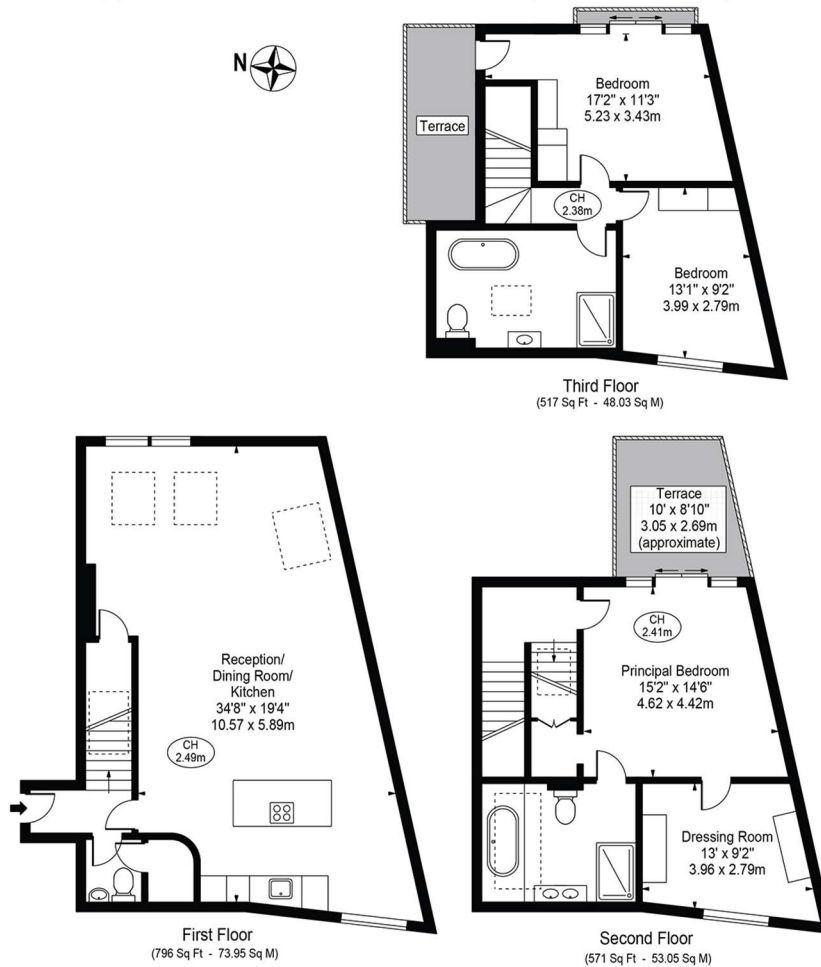
Holding deposit = 1 weeks rent of £3,461.54  
Deposit is 6 weeks rent (£3,461.54 pw = £20,769.24 deposit)





## Mead Court

Approx. Gross Internal Area 1884 Sq Ft - 175.02 Sq M



For Illustration Purposes Only - Not To Scale

This floor plan should be used as a general outline for guidance only and does not constitute in whole or in part an offer or contract. Any intending purchaser or lessee should satisfy themselves by inspection, searches, enquiries and full survey as to the correctness of each statement. Any areas, measurements or distances quoted are approximate and should not be used to value a property or be the basis of any sale or let. Copyright Morriarti Photography & Design LTD



T: 020 7493 0676

18 Davies Street, Mayfair, London, W1K 3DS

E: mayfair@carterjonas.co.uk



Exclusive UK affiliate of

**CHRISTIE'S**  
INTERNATIONAL REAL ESTATE

Classification L2 - Business Data

### IMPORTANT INFORMATION

These particulars are for general information purposes only and do not represent an offer or contract or part of one. Carter Jonas or anyone in their employment has made every attempt to ensure that the particulars and other information provided are as accurate as possible and they are not intended to amount to advice on which you should rely as being factually accurate. Full information which may be relevant to your decision regarding the property can be found on the property listing on [carterjonas.co.uk](http://carterjonas.co.uk) or a separately available material information sheet, and we would advise you to confirm the details of any material information prior to any offer being submitted. You should not assume that the property has all necessary planning, building regulations or other consents and Carter Jonas has not tested any services, facilities, or equipment. Any measurements and distances given are approximate only. Where Carter Jonas has been provided with a floorplan by a third party, we cannot guarantee that the floorplan has been measured in accordance with IPMS. Purchasers or prospective tenants must satisfy themselves of all of the aforementioned by independent inspection or otherwise. Our images only represent part of the property as it appeared at the time they were taken and do not represent the furnishings included; these are confirmed in a separate inventory. If you require further information, please contact us. \*Administration fees may apply depending on tenancy type. Please contact your local branch for this information.