



SMALLWOOD ROAD, LONDON, SW17

Carter Jonas

SMALLWOOD ROAD, LONDON, SW17

A most attractive two double bedroom Victorian cottage, with bags of character, and a fantastic 60 ft south facing garden, in an outstanding residential location 0.5 miles from the Northern Line at Tooting and 1.1 miles from Earlsfield.

The bright through-reception room overlooks the gorgeous lawned garden, and creates a lovely space to entertain, with ample room for a dining table, and semi-open plan kitchen adjacent. For those who seek more space, and subject to the necessary permissions, the room could be extended to the rear to create a large kitchen/dining/living space and a separate sitting room.

On the first floor, two double bedrooms, with built-in storage. There is a large loft room, which has been boarded and provides fantastic storage. Like many of the houses on this road, it could be further developed into more bedroom space, subject to all required permissions. The property is being sold with no onward chain.

Smallwood Road is a quiet residential street, close to the shops, transport and amenities of Tooting. Young families are well served by nearby nurseries, schools such as Smallwood Primary School and Burntwood School, both of which are within easy reach.

Transport links are convenient, with Tooting Broadway Underground Station nearby (0.5 miles), providing access to the Northern Line for quick connections to central London. Additionally, Earlsfield Train Station (1.1 miles) is within easy reach, offering direct services to Waterloo.

AMENITIES

- Victorian cottage
- Double reception room
- Two double bedrooms
- Bathroom
- 60 ft south facing garden
- Potential to extend to the rear and loft subject to permissions
- Close to Transport
- Close to amenities of Tooting Broadway
- Close to schools and nurseries

TENURE Freehold

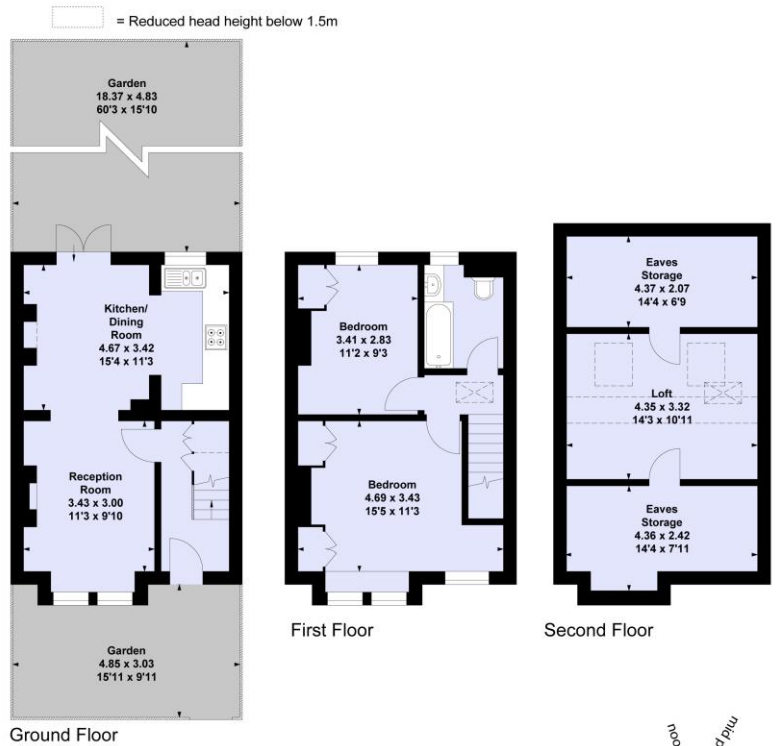
LOCAL AUTHORITY London Borough of Wandsworth

EPC BAND D

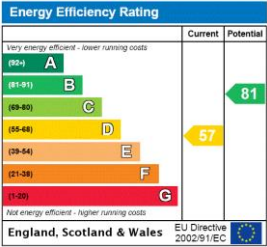
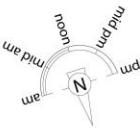




Smallwood Road, SW17 Approximate Floor Area = 67.32 sq m / 724 sq ft (Including Eaves Storage/Loft) Eaves Storage/Loft = 33.90 sq m / 365 sq ft



This marketing plan is for layout guidance only. Not drawn to scale unless stated. Windows & door openings are approximate. Whilst every care is taken in the preparation of this plan, please check all dimensions, shapes and compass bearings before making any decisions reliant upon them.



Wandsworth Sales 020 8767 7711

wandsworth@carterjonas.co.uk
19 Bellevue Road, London, SW17 7EG

carterjonas.co.uk
Offices throughout the UK

Exclusive UK affiliate of
CHRISTIE'S
INTERNATIONAL REAL ESTATE

IMPORTANT INFORMATION

These particulars are for general information purposes only and do not represent an offer or contract or part of one. Carter Jonas or anyone in their employment has made every attempt to ensure that the particulars and other information provided are as accurate as possible and they are not intended to amount to advice on which you should rely as being factually accurate. Full information which may be relevant to your decision regarding the property can be found on the property listing on carterjonas.co.uk or, (including off market properties) on the brochure or a separately available material information sheet. We would advise you to confirm the details of any material information prior to any offer being submitted. You should not assume that the property has all necessary planning, building regulations or other consents and Carter Jonas has not tested any services, facilities or equipment. Any measurements and distances given are approximate only. Where Carter Jonas has been provided with a floorplan by a third party, we cannot guarantee that the floorplan has been measured in accordance with IPMS. Purchasers must satisfy themselves of all of the aforementioned by independent inspection or otherwise. Our images only represent part of the property as it appeared at the time they were taken and do not represent the furnishings included; these are confirmed in a separate inventory. If you require further information, please contact us.