



**OVAL ROAD, LONDON, NW1**  
£995 per week\*

**Carter Jonas**

# LATITUDE HOUSE OVAL ROAD LONDON NW1 7EU

- Open Plan Reception/ Kitchen
- Fully Fitted kitchen
- One double bedroom
- Modern Bathroom with bathtub & shower
- Located within easy access of Oval Road
- Furnished

## THE PROPERTY

Now available to rent in Latitude House, this stunning and contemporary one-bedroom apartment boasts a luminous reception area, enhanced by large windows that invite plenty of natural light.

The open-concept kitchen provides ample space for dining, while the apartment includes a generously sized bedroom with integrated wardrobes. Additionally, there's a stylish, modern bathroom.

Oval Road in Camden is a prime location combining the lively atmosphere of Camden with the tranquillity of nearby Regent's Park and Regent's Canal. The area offers a vibrant mix of markets, restaurants, and cultural attractions, perfect for urban living. Excellent transport links are nearby, with Camden Town Station just 0.3 miles away and Mornington Crescent Station 0.5 miles away, both on the Northern Line, providing quick access to central London and beyond.

Holding deposit is 1 week's rent = £995 (at asking price)

Security deposit is 5 week's rent = £4,975 (at asking price £995pw)

Council Tax Band F

For the latest information on broadband and mobile coverage, please visit [/checker.ofcom](https://www.ofcom.gov.uk/usagechecker/) for the most up-to-date details.


## A beautiful, modern one-bedroom apartment offers a bright reception room, open-plan kitchen and stylish bathroom

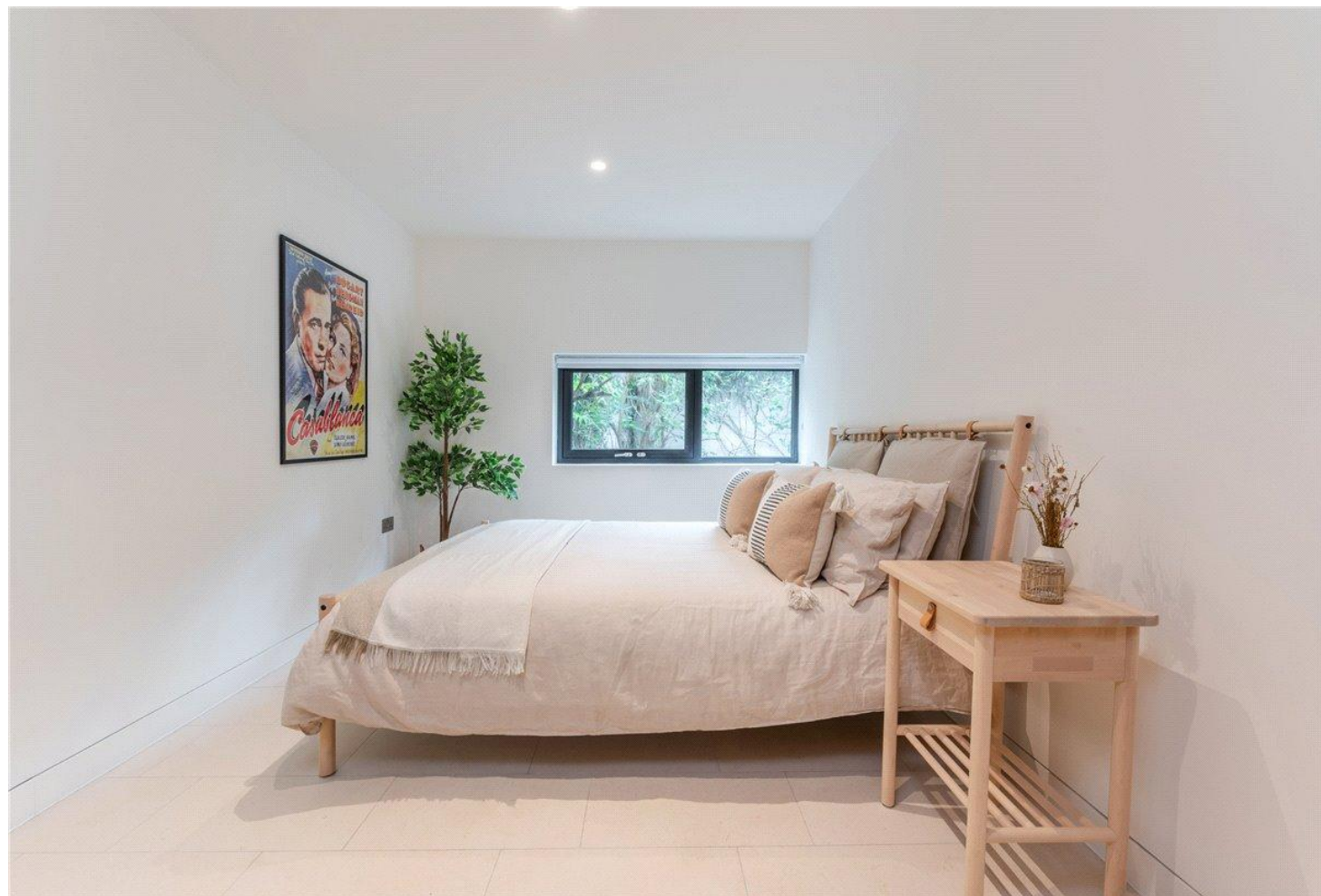


## ADDITIONAL INFORMATION

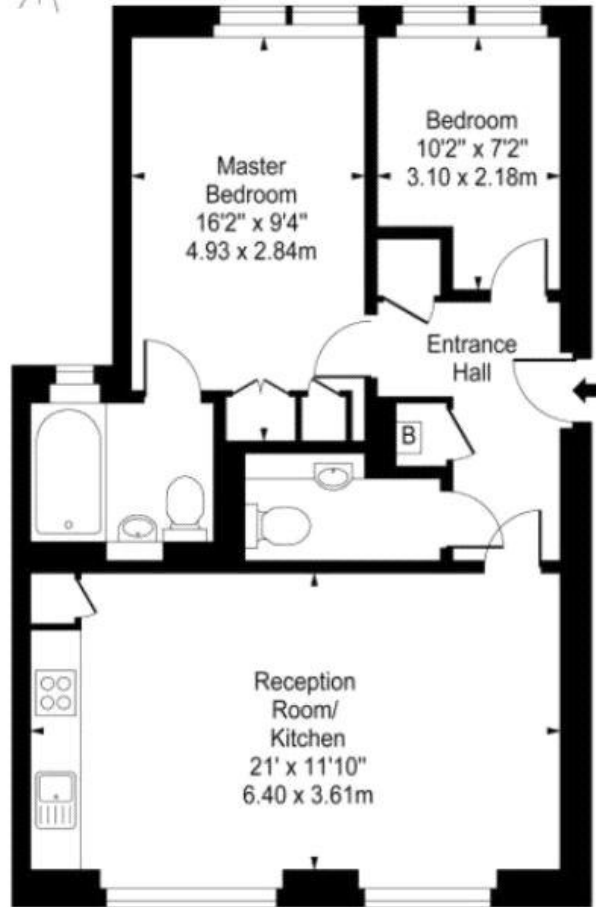
Viewing Strictly by appointment

Local Authority Camden Council - Council Tax Band F

Energy Efficiency Rating		Current	Potential
Very energy efficient - lower running costs			
(92+)	<b>A</b>		
(81-91)	<b>B</b>		
(69-80)	<b>C</b>	79	79
(55-68)	<b>D</b>		
(39-54)	<b>E</b>		
(21-38)	<b>F</b>		
(1-20)	<b>G</b>		
Not energy efficient - higher running costs			
England, Scotland & Wales		EU Directive 2002/91/EC	



Latitude House,  
Oval Road



Ground Floor  
Gross Internal Area - 646 Sq Ft - 60.01 Sq M



T: 020 7486 8866  
37 New Cavendish Street, London, W1G 9TL  
E: marylebone.lettings@carterjonas.co.uk



Exclusive UK affiliate of

**CHRISTIE'S**  
INTERNATIONAL REAL ESTATE

Classification L2 - Business Data

**IMPORTANT INFORMATION**

These particulars are for general information purposes only and do not represent an offer or contract or part of one. Carter Jonas or anyone in their employment has made every attempt to ensure that the particulars and other information provided are as accurate as possible and they are not intended to amount to advice on which you should rely as being factually accurate. Full information which may be relevant to your decision regarding the property can be found on the property listing on [carterjonas.co.uk](http://carterjonas.co.uk) or a separately available material information sheet, and we would advise you to confirm the details of any material information prior to any offer being submitted. You should not assume that the property has all necessary planning, building regulations or other consents and Carter Jonas has not tested any services, facilities, or equipment. Any measurements and distances given are approximate only. Where Carter Jonas has been provided with a floorplan by a third party, we cannot guarantee that the floorplan has been measured in accordance with IPMS. Purchasers or prospective tenants must satisfy themselves of all of the aforementioned by independent inspection or otherwise. Our images only represent part of the property as it appeared at the time they were taken and do not represent the furnishings included; these are confirmed in a separate inventory. If you require further information, please contact us. \*Administration fees may apply depending on tenancy type. Please contact your local branch for this information.