



**CHILTERN STREET, LONDON, W1U**

**£1,650,000**

**Carter Jonas**

# CHILTERN STREET, LONDON, W1U

Located on one of Marylebone's most sought-after streets, this beautifully presented two-bedroom, two-bathroom first floor apartment has been recently refurbished to an exceptional standard, offering stylish contemporary living in the heart of Central London.

The property features elegant wood flooring throughout and a superb open-plan kitchen and dining area, perfectly designed for both everyday living and entertaining.

Both bedrooms are generously proportioned, complemented by two modern, bathrooms finished to a luxurious standard.

Ideally positioned on the ever popular Chiltern Street, the apartment benefits from Marylebone's vibrant village atmosphere, with an array of boutique shops, artisan cafés, and some of London's finest high-end restaurants just moments away. Excellent transport links are also within easy reach, making this an ideal home or pied-à-terre.

## AMENITIES

- Recently Refurbished
- First Floor
- Two Bedrooms
- Two Bathrooms
- Central Location

**TENURE** Leasehold Expires 25 September 2145

**LOCAL AUTHORITY** Westminster City Council (Band F)

**EPC BAND C**

## LOCATED ON ONE OF MARYLEBONE'S MOST SOUGHT-AFTER STREETS, THIS BEAUTIFULLY PRESENTED TWO-BEDROOM, TWO-BATHROOM FIRST FLOOR APARTMENT



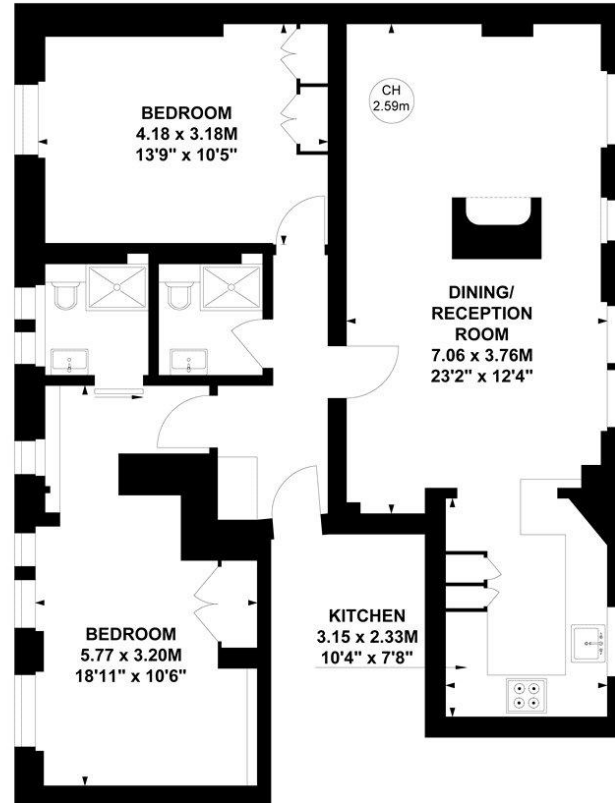


# Chiltern Street, W1U

Approximate gross internal area

76.16 sq m / 820 sq ft

Key :  
CH - Ceiling Height



First Floor

This plan is not to scale and must be used as layout guidance only. All measurements and areas are approximate and should not be relied upon to provide accurate information. This plan must not be relied upon when making property valuations, design considerations or any other such relevant decisions. We accept no responsibility or liability (whether in contract, tort or otherwise) in relation to any loss whatsoever arising from or in connection with any use of this plan or the adequacy, accuracy or completeness of it or any information within it.

Mayfair 020 7493 0676

mayfair.sales@carterjonas.co.uk  
18 Davies Street, Mayfair, London, W1K 3DS

carterjonas.co.uk  
Offices throughout the UK

Exclusive UK affiliate of

**CHRISTIE'S**  
INTERNATIONAL REAL ESTATE

## IMPORTANT INFORMATION

*These particulars are for general information purposes only and do not represent an offer or contract or part of one. Carter Jonas or anyone in their employment has made every attempt to ensure that the particulars and other information provided are as accurate as possible and they are not intended to amount to advice on which you should rely as being factually accurate. Full information which may be relevant to your decision regarding the property can be found on the property listing on carterjonas.co.uk or, (including off market properties) on the brochure or a separately available material information sheet. We would advise you to confirm the details of any material information prior to any offer being submitted. You should not assume that the property has all necessary planning, building regulations or other consents and Carter Jonas has not tested any services, facilities or equipment. Any measurements and distances given are approximate only. Where Carter Jonas has been provided with a floorplan by a third party, we cannot guarantee that the floorplan has been measured in accordance with IPMS. Purchasers must satisfy themselves of all of the aforementioned by independent inspection or otherwise. Our images only represent part of the property as it appeared at the time they were taken and do not represent the furnishings included; these are confirmed in a separate inventory. If you require further information, please contact us.*