



TIERNEY LANE, LONDON, W6
£800,000

Carter Jonas

TIERNEY LANE, LONDON, W6

A GREAT OPPORTUNITY TO ACQUIRE A FABULOUS FLAT WITH A BALCONY.

This immaculate two bedroom 2nd floor modern apartment (with lift) within the Morris Court development in Fulham Reach, offering 675 sq. ft. of space.

Designed for modern living, the apartment features a spacious open-plan kitchen complete with Miele appliances flowing onto living/dining area which opens onto the balcony. Both bedrooms come with built-in wardrobes, while the stylish bathroom boasts premium finishes. Additional highlights include comfort cooling.

Exclusive Resident Amenities:

- * 24-hour concierge service
- * Swimming pool, sauna, and steam room
- * Treatment room and screening room
- * Snooker room and virtual golf facilities

Adjacent to the River Thames and ideally located for Hammersmith Underground Station, 0.6 miles, Piccadilly, District and Hammersmith and City lines offering great access to the West End, the City and Heathrow Airport.

AMENITIES

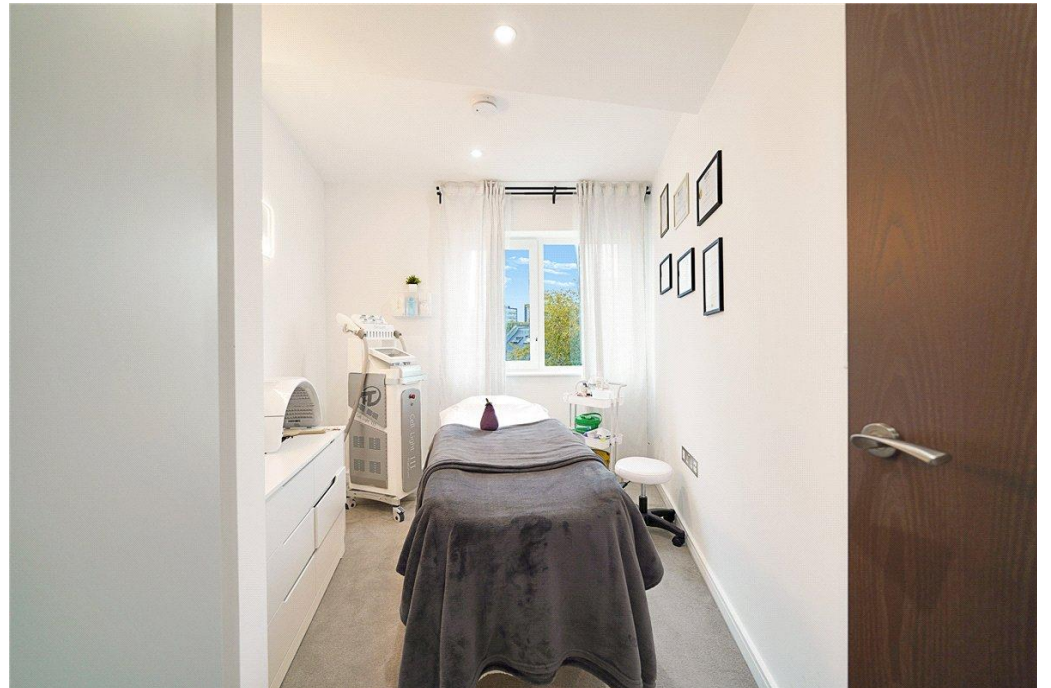
- Two Bedrooms
- Reception Room
- One Bathroom
- Balcony
- Communal Gardens

TENURE Leasehold

LOCAL AUTHORITY Hammersmith and Fulham

EPC BAND B



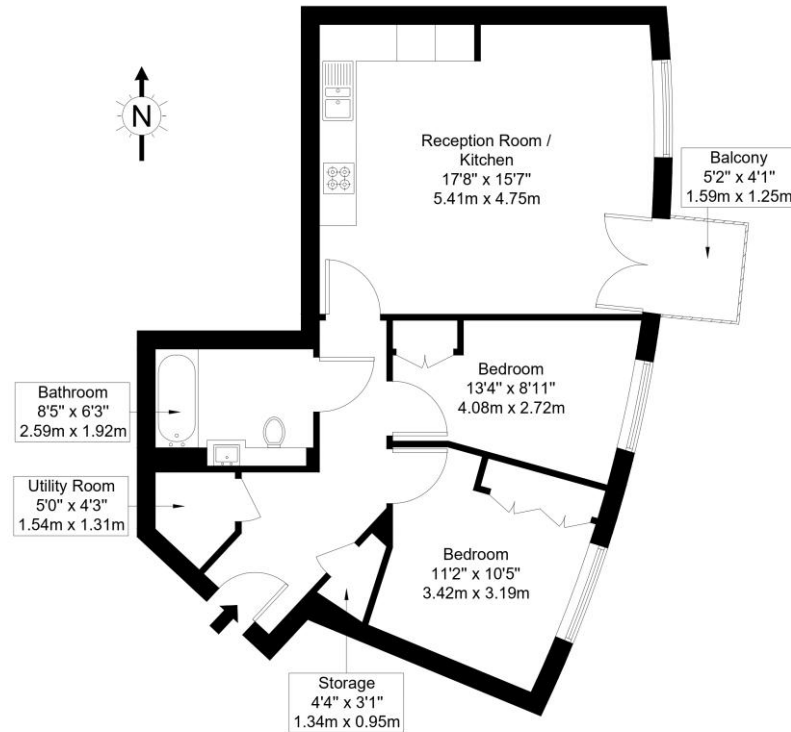


Tierney Lane, W6 9YL

Approx Gross Internal Area = 62.7 sq m / 675 sq ft

Balcony = 2.2 sq m / 24 sq ft

Total = 64.9 sq m / 699 sq ft



Second Floor

Ref :

Copyright **BLEU PLAN**

The Floor plan is not to scale and measurements and areas shown are approximate and therefore should be used for illustrative purposes only. The plan has been prepared in accordance with the RICS code of Measuring Practice and whilst we have confidence in the information produced it must not be relied on. Maximum lengths and widths are represented on the floor plan. If there is any aspect of particular importance, you should carry out or commission your own inspection of the property.
Copyright © BleuPlan

Score	Energy rating	Current	Potential
92+	A		
81-91	B		
69-80	C		
55-68	D		
39-54	E		
21-38	F		
1-20	G		

Fulham 020 7731 3333

bishopspark@carterjonas.co.uk
361 Fulham Palace Road, London, SW6 6TA

carterjonas.co.uk
Offices throughout the UK

Exclusive UK affiliate of
CHRISTIE'S
INTERNATIONAL REAL ESTATE

IMPORTANT INFORMATION

These particulars are for general information purposes only and do not represent an offer or contract or part of one. Carter Jonas or anyone in their employment has made every attempt to ensure that the particulars and other information provided are as accurate as possible and they are not intended to amount to advice on which you should rely as being factually accurate. Full information which may be relevant to your decision regarding the property can be found on the property listing on carterjonas.co.uk or, (including off market properties) on the brochure or a separately available material information sheet. We would advise you to confirm the details of any material information prior to any offer being submitted. You should not assume that the property has all necessary planning, building regulations or other consents and Carter Jonas has not tested any services, facilities or equipment. Any measurements and distances given are approximate only. Where Carter Jonas has been provided with a floorplan by a third party, we cannot guarantee that the floorplan has been measured in accordance with IPMS. Purchasers must satisfy themselves of all of the aforementioned by independent inspection or otherwise. Our images only represent part of the property as it appeared at the time they were taken and do not represent the furnishings included; these are confirmed in a separate inventory. If you require further information, please contact us.