



**NASCOT CLOSE, BRAMLEY, S66**  
£1,000 per month\*

**Carter Jonas**

# NASCOT CLOSE, BRAMLEY, S66

A 3 bedroom detached dormer bungalow with a garage and off-street parking in Bramley.

Accommodation comprises -

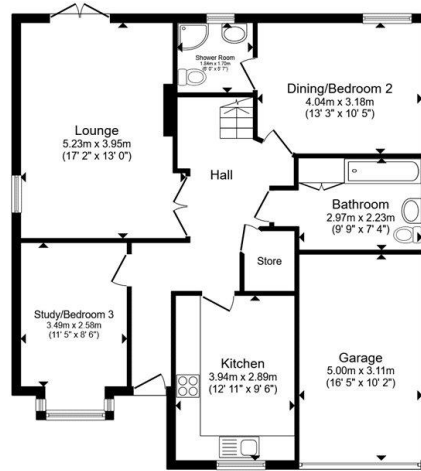
Ground Floor: Entrance hall, living room, kitchen, bedroom two with ensuite, third bedroom, family bathroom.

First Floor: Principal bedroom with ensuite and storage cupboard.

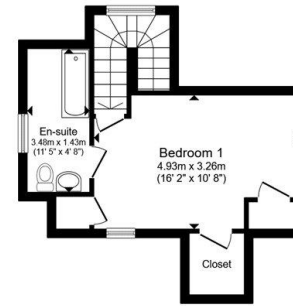
External: Driveway, garage and rear enclosed garden.

- Council Tax Band = D
- Deposit Required = £1,153
- Long Let, Minimum term 12 months
- Three Bedrooms
- Lounge
- Separate Kitchen
- Bathroom & 2 En Suites
- Rear Garden
- Off-Street Parking
- Integrated Garage
- Unfurnished
- EPC = C

| Score | Energy rating | Current | Potential |
|-------|---------------|---------|-----------|
| 92+   | A             |         |           |
| 81-91 | B             |         |           |
| 69-80 | C             |         |           |
| 55-68 | D             |         |           |
| 39-54 | E             |         |           |
| 21-38 | F             |         |           |
| 1-20  | G             |         |           |
|       |               | 70 C    | 81 B      |



Ground Floor



First Floor

Total floor area 125.7 sq.m. (1,352 sq.ft.) approx

This floor plan is for illustrative purposes only. It is not drawn to scale. Any measurements, floor areas (including any total floor area), openings and orientation are approximate. No details are guaranteed, they cannot be relied upon for any purpose and they do not form part of any agreement. No liability is taken for any error, omission or misstatement. A party must rely upon its own inspection(s). Powered by [www.propertybox.io](http://www.propertybox.io)

Carter Jonas



Birmingham Lettings 0121 389 9670

[birmingham.lettings@carterjonas.co.uk](mailto:birmingham.lettings@carterjonas.co.uk)



Classification L2 - Business Data

## IMPORTANT INFORMATION

These particulars are for general information purposes only and do not represent an offer or contract or part of one. Carter Jonas or anyone in their employment has made every attempt to ensure that the particulars and other information provided are as accurate as possible and they are not intended to amount to advice on which you should rely as being factually accurate. Full information which may be relevant to your decision regarding the property can be found on the property listing on [carterjonas.co.uk](http://carterjonas.co.uk) or a separately available material information sheet, and we would advise you to confirm the details of any material information prior to any offer being submitted. You should not assume that the property has all necessary planning, building regulations or other consents and Carter Jonas has not tested any services, facilities, or equipment. Any measurements and distances given are approximate only. Where Carter Jonas has been provided with a floorplan by a third party, we cannot guarantee that the floorplan has been measured in accordance with IPMS. Purchasers or prospective tenants must satisfy themselves of all of the aforementioned by independent inspection or otherwise. Our images only represent part of the property as it appeared at the time they were taken and do not represent the furnishings included; these are confirmed in a separate inventory. If you require further information, please contact us. \*Administration fees may apply depending on tenancy type. Please contact your local branch for this information.