



STREAM COTTAGE & STREAM FARM, TADCASTER ROAD, SHERBURN IN ELMET

Offers Over £1,500,000

Carter Jonas

TADCASTER ROAD, SHERBURN IN ELMET, LS25 6EJ

A rare multi-home family estate with land, privacy and future potential

An exceptional opportunity to acquire a private family estate comprising two substantial homes, a self-contained apartment, outbuildings and approximately 15 acres of land in total, set in a beautiful rural position close to Sherburn-in-Elmet.

This is a property that works brilliantly for multigenerational living – parents, grown-up children, grandparents – all together, but with space, independence and privacy for everyone.

The principal house extends to around 4,000 sq ft, offering generous, well-balanced accommodation with five bedrooms and multiple reception spaces, ideal for family life and entertaining. It sits comfortably within the grounds and enjoys its own sense of scale and presence. A tennis court and an adjoining self-contained apartment provide further flexibility – perfect for relatives, older children or guests.

The second house, extending to approximately 2,500 sq ft, offers four ensuite bedrooms and three reception rooms and presents an exciting opportunity for a buyer to modernise and tailor the space to suit their own needs – whether as a second family home, a home for older children, or a long-term base for extended family.

The homes are linked by a shared courtyard, creating a natural hub while still allowing each property to function independently. The grounds extend to approximately 15 acres, including open fields and woodland, delivering a rare sense of space, privacy and long-term value.

Further features include:

Large outbuilding – ideal as a party barn, games room or home offices

Stabling for equestrian use

Additional buildings offering storage or further potential

TENURE Freehold

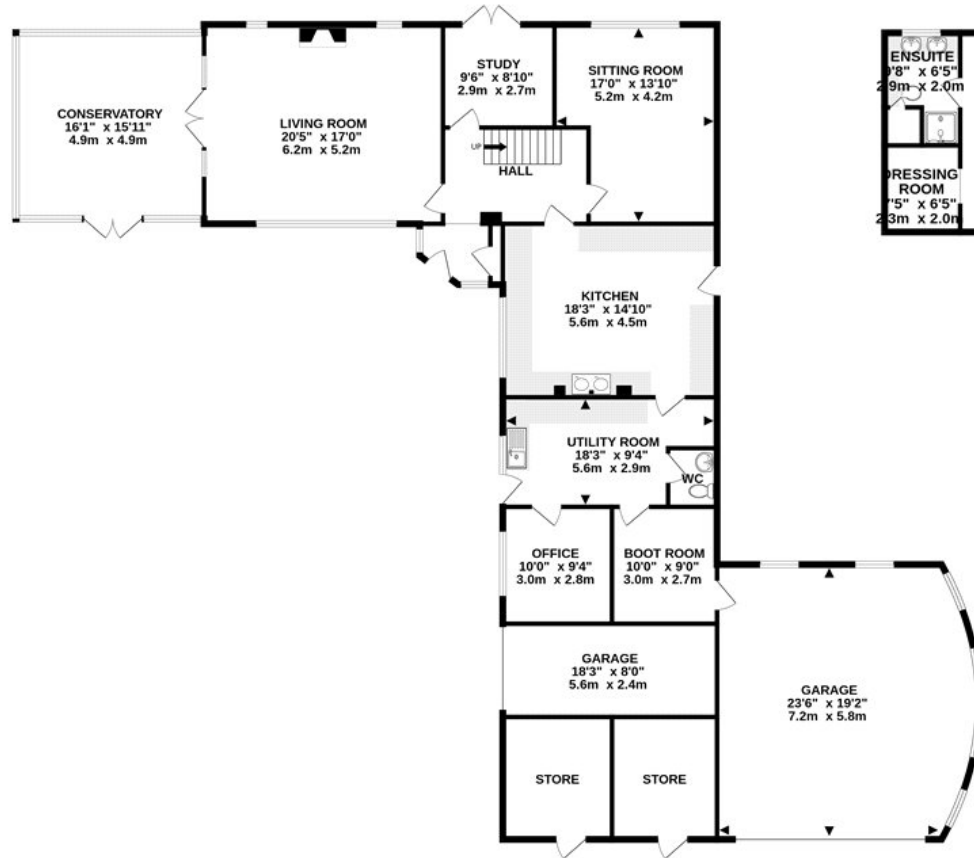
A RARE OPPORTUNITY TO ACQUIRE A PRIVATE FAMILY ESTATE COMPRISING TWO SUBSTANTIAL HOUSES, A SELF-CONTAINED APARTMENT, OUTBUILDINGS AND APPROXIMATELY 15 ACRES OF LAND, IDEAL FOR MULTIGENERATIONAL LIVING.



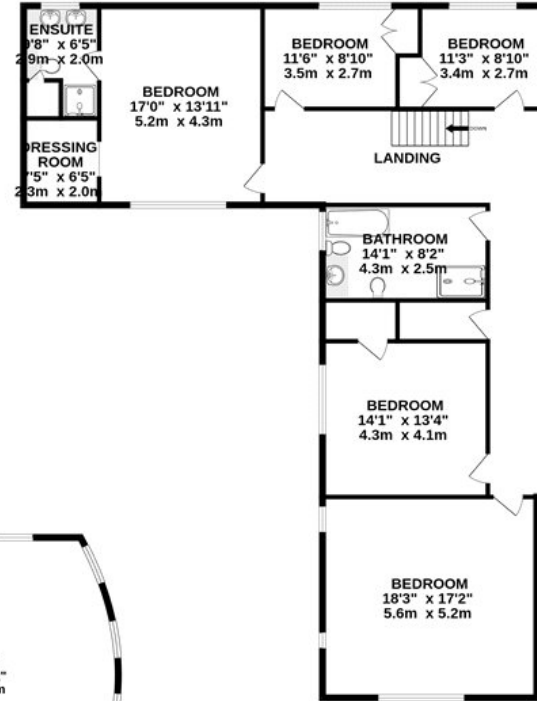




GROUND FLOOR
2485 sq.ft. (230.9 sq.m.) approx.



1ST FLOOR
1570 sq.ft. (145.9 sq.m.) approx.



TOTAL FLOOR AREA : 4055 sq.ft. (376.7 sq.m.) approx.

Whilst every attempt has been made to ensure the accuracy of the floorplan, measurements of rooms and any other items are approximate, if included in the plan the garage/stores will form part of the overall floor area and no responsibility is taken for any error, omission or mis-statement. This plan is for illustrative purposes only and should be used as such by any prospective purchaser. The services, systems and appliances shown have not been tested and no guarantee as to their operability.
Made with Metropix ©2025

York 01904 558200

york@carterjonas.co.uk
82 Micklegate, York, YO1 6LF

carterjonas.co.uk
Offices throughout the UK

Exclusive UK affiliate of

CHRISTIE'S
INTERNATIONAL REAL ESTATE

IMPORTANT INFORMATION

These particulars are for general information purposes only and do not represent an offer of contract or part of one. Carter Jonas has made every attempt to ensure that the particulars and other information provided are as accurate as possible and are not intended to amount to advice on which you should rely as being factually accurate. You should not assume that the property has all necessary planning, building regulations or other consents and Carter Jonas have not tested any services, facilities or equipment. Any measurements and distances given are approximate only. Purchasers must satisfy themselves of all of the aforementioned by independent inspection or otherwise. Although we make reasonable efforts to update our information, neither Carter Jonas LLP nor anyone in its employment or acting on its behalf makes any representations warranties or guarantees, whether express or implied, in relation to the property, or that the content in these particulars is accurate, complete or up to date. Our images only represent part of the property as it appeared at the time they were taken. If you require further information please contact us.