



**WATERMEADOW LANE, LONDON, SW6**  
£900,000

**Carter Jonas**



# WATERMEADOW LANE, LONDON. SW6

Set within the brand-new Chelsea Botanica development, this beautifully appointed two-bedroom, two-bathroom apartment combines modern design with an exceptional riverside location. The apartment features a bright open-plan living, kitchen, dining area, seamlessly connected to a private balcony with stunning views towards the river and city skyline. The contemporary kitchen is fully fitted with integrated appliances, designed for both style and functionality.

Both bedrooms are generously sized, each benefitting from a luxurious en suite bathroom, creating the perfect balance of comfort and privacy.

Residents of Chelsea Botanica enjoy exclusive access to a range of first-class amenities, including a state-of-the-art Peloton gym and beautifully landscaped gardens offering a tranquil escape in the heart of Fulham.

Located in Sands End, the development provides easy access to Sainsbury's Fulham Wharf and the amenities, bars and restaurants of Wandsworth Bridge Road, it also benefits from convenient access to Imperial Wharf Station (Overground Line - 0.5miles) and ample local bus routes.

## AMENITIES

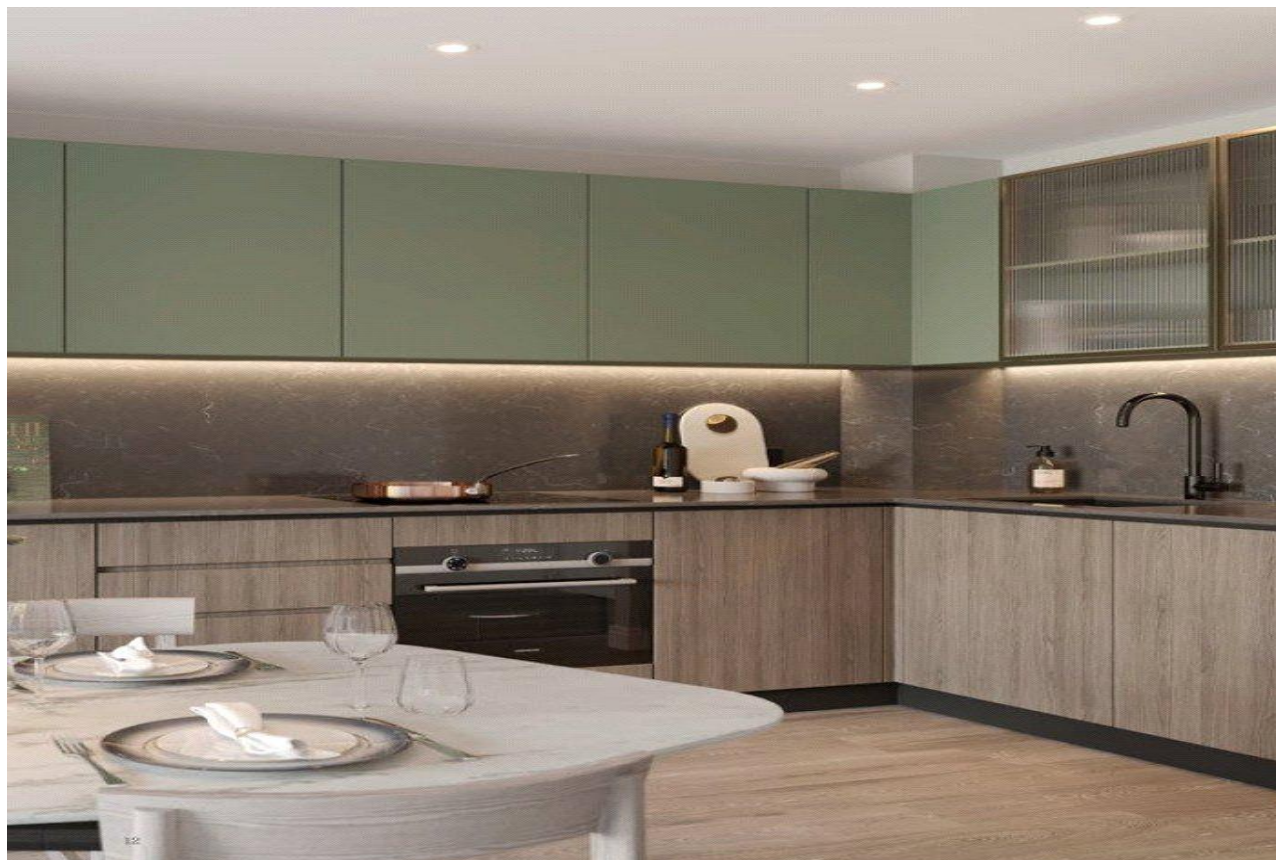
- 2 Bedrooms, both ensuite
- Modern, open plan living space
- Fully fitted with all appliances
- Balcony
- 24hr concierge, Peloton Hub and gardens
- Lift

**TENURE** Leasehold

**LOCAL AUTHORITY** Hammersmith and Fulham

**EPC BAND** To be confirmed

## STUNNING 2 BEDROOM APARTMENT WITH BALCONY AND RIVER VIEWS IN CHELSEA BOTANICA RIVERSIDE



Classification L2 - Business Data







**TOTAL AREA** 77.1SQ M 830 SQ FT

**TOTAL INTERNAL AREA** 70 SQ M 753 SQ FT

Kitchen / Living / Dining	3936mm x 7589mm	12'11" x 24'11"
Master Bedroom	2800mm x 5196mm	9'2" x 17'1"
Bedroom 2	2900mm x 5176mm	9'6" x 16'12"

**FLOORPLATE**



**Fulham 020 7731 3333**

bishopspark@carterjonas.co.uk  
361 Fulham Palace Road, London, SW6 6TA

**carterjonas.co.uk**  
Offices throughout the UK

*Exclusive UK affiliate of*

**CHRISTIE'S**  
INTERNATIONAL REAL ESTATE

Classification L2 - Business Data

### IMPORTANT INFORMATION

These particulars are for general information purposes only and do not represent an offer or contract or part of one. Carter Jonas or anyone in their employment has made every attempt to ensure that the particulars and other information provided are as accurate as possible and they are not intended to amount to advice on which you should rely as being factually accurate. Full information which may be relevant to your decision regarding the property can be found on the property listing on [carterjonas.co.uk](http://carterjonas.co.uk) or, (including off market properties) on the brochure or a separately available material information sheet. We would advise you to confirm the details of any material information prior to any offer being submitted. You should not assume that the property has all necessary planning, building regulations or other consents and Carter Jonas has not tested any services, facilities or equipment. Any measurements and distances given are approximate only. Where Carter Jonas has been provided with a floorplan by a third party, we cannot guarantee that the floorplan has been measured in accordance with IPMS. Purchasers must satisfy themselves of all of the aforementioned by independent inspection or otherwise. Our images only represent part of the property as it appeared at the time they were taken and do not represent the furnishings included; these are confirmed in a separate inventory. If you require further information, please contact us.