



**BARDWELL ROAD, OXFORD, OX2**  
£3,750 per month\*

**Carter Jonas**

# 16 OCKHAM COURT, BARDWELL ROAD, OXFORD, OXFORDSHIRE,

- Stunning open-plan kitchen/dining/living room
- Three bedrooms
- High ceilings
- Finished to an exceptionally high standard throughout
- Sought-after location
- Proximity to North Oxford's excellent range of schools

## THE PROPERTY

Spacious three double bedroom penthouse duplex, designed with stylish open-plan living.

Beautifully designed for modern living, the ground floor features a bright open-plan kitchen, dining and living area. Also on this level are the principal bedroom, a family bathroom and a WC.

Upstairs, the property offers two generously sized double bedrooms and a stylish family shower room.

Available unfurnished from early August 2026.

EPC Rating D. Council Tax Band H. Please see Oxford City Council Website for current cost)

No access to Loft. Mains gas, electricity, water and drainage.

Internet & Mobile: Further information on availability and speeds can be found at [checker.ofcom.org.uk](http://checker.ofcom.org.uk)

Flood Zone (1) – Low

At a rent of £3750 per calendar month

Holding deposit of 1 week's rent £866

Security deposit of 5 weeks rent £4330

Spacious three double bedroom penthouse duplex, designed with stylish open-plan living. The first floor boasts two generous double bedrooms and a sleek family shower room.



---

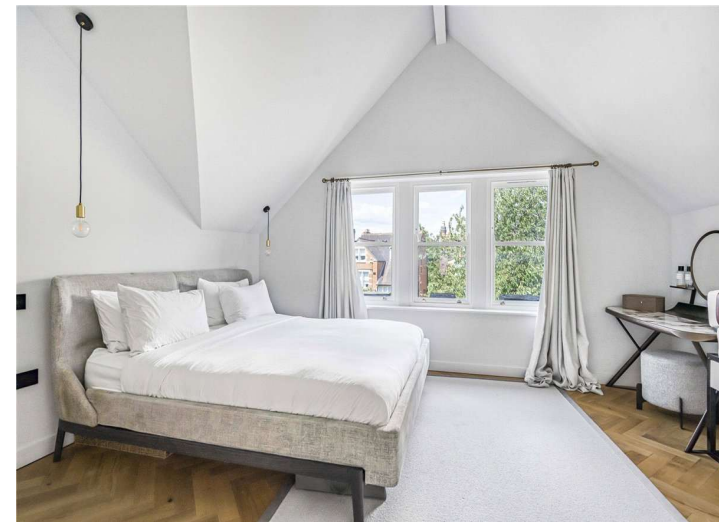
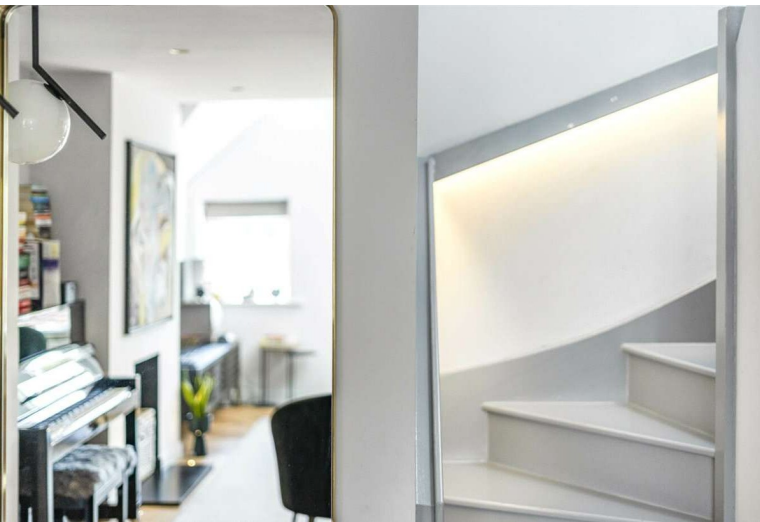
## ADDITIONAL INFORMATION

---

Viewing Strictly by appointment

Local Authority Oxford City Council - Council Tax Band H

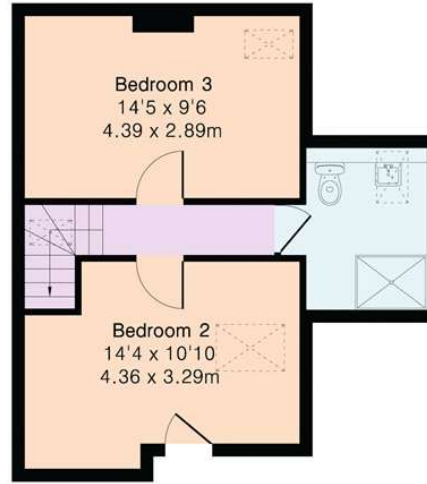
---



**Approximate Gross Internal Area 1139 sq ft - 105 sq m**

Ground Floor Area 757 sq ft – 70 sq m

First Floor Area 382 sq ft – 35 sq m



Ground Floor

First Floor



**T: 01865 511444**

Mayfield House, 256 Banbury Road, Oxford, Oxfordshire, OX2 7DE

E: oxford.lettings@carterjonas.co.uk



*Exclusive UK affiliate of*

**CHRISTIE'S**  
INTERNATIONAL REAL ESTATE

Classification L2 - Business Data

**IMPORTANT INFORMATION**

These particulars are for general information purposes only and do not represent an offer or contract or part of one. Carter Jonas or anyone in their employment has made every attempt to ensure that the particulars and other information provided are as accurate as possible and they are not intended to amount to advice on which you should rely as being factually accurate. Full information which may be relevant to your decision regarding the property can be found on the property listing on carterjonas.co.uk or a separately available material information sheet, and we would advise you to confirm the details of any material information prior to any offer being submitted. You should not assume that the property has all necessary planning, building regulations or other consents and Carter Jonas has not tested any services, facilities, or equipment. Any measurements and distances given are approximate only. Where Carter Jonas has been provided with a floorplan by a third party, we cannot guarantee that the floorplan has been measured in accordance with IPMS. Purchasers or prospective tenants must satisfy themselves of all of the aforementioned by independent inspection or otherwise. Our images only represent part of the property as it appeared at the time they were taken and do not represent the furnishings included; these are confirmed in a separate inventory. If you require further information, please contact us. \*Administration fees may apply depending on tenancy type. Please contact your local branch for this information.