



BARDWELL ROAD, OXFORD, OX2
£3,850 per month*

Carter Jonas

16 OCKHAM COURT, BARDWELL ROAD, OXFORD, OXFORDSHIRE, OX2 6SR

Spacious three double bedroom penthouse duplex, designed with stylish open-plan living—ideal for entertaining. The first floor boasts two generous double bedrooms with ample storage and a sleek family shower room. Finished to a high standard throughout.

- Stunning open-plan kitchen/dining/living room
- Three bedrooms
- High ceilings
- Finished to an exceptionally high standard throughout
- Sought-after location
- Close proximity to North Oxford's excellent range of schools

THE PROPERTY

Available unfurnished from early August 2026.

EPC Rating D. Council Tax Band H. Please see Oxford City Council Website for current cost)

No access to Loft. Mains gas, electricity, water and drainage.

Internet & Mobile: Further information on availability and speeds can be found at checker.ofcom.org.uk

Flood Zone (1) – Low

At a rent of £3850 per calendar month

Holding deposit of 1 week's rent £888

Security deposit of 5 weeks rent £4440

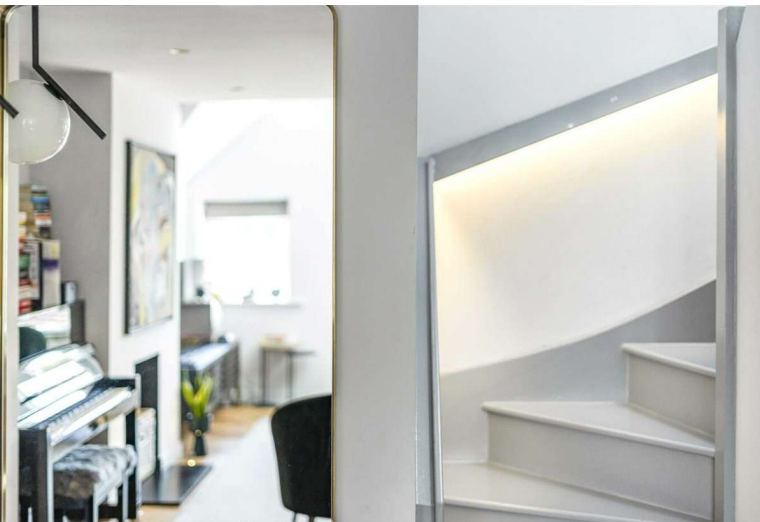


ADDITIONAL INFORMATION

Offers Available for a minimum term of 12 months longer terms will be considered

Viewing Strictly by appointment

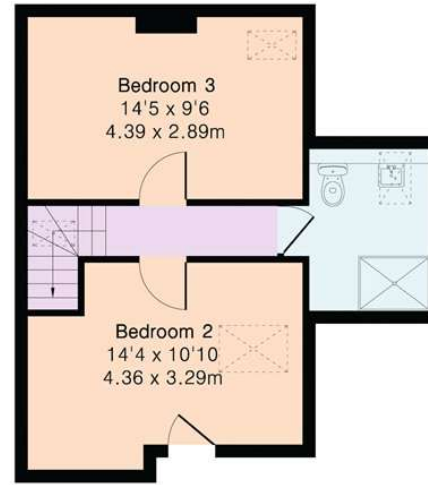
Local Authority Oxford City Council - Council Tax Band H



Approximate Gross Internal Area 1139 sq ft - 105 sq m

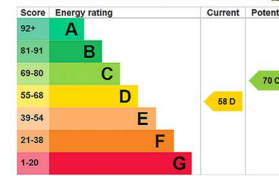
Ground Floor Area 757 sq ft – 70 sq m

First Floor Area 382 sq ft – 35 sq m



Ground Floor

First Floor



T: 01865 511444

Mayfield House, 256 Banbury Road, Oxford, Oxfordshire, OX2 7DE

E: oxford.lettings@carterjonas.co.uk



Exclusive UK affiliate of

CHRISTIE'S
INTERNATIONAL REAL ESTATE

Classification L2 - Business Data

IMPORTANT INFORMATION

These particulars are for general information purposes only and do not represent an offer or contract or part of one. Carter Jonas or anyone in their employment has made every attempt to ensure that the particulars and other information provided are as accurate as possible and they are not intended to amount to advice on which you should rely as being factually accurate. Full information which may be relevant to your decision regarding the property can be found on the property listing on carterjonas.co.uk or a separately available material information sheet, and we would advise you to confirm the details of any material information prior to any offer being submitted. You should not assume that the property has all necessary planning, building regulations or other consents and Carter Jonas has not tested any services, facilities, or equipment. Any measurements and distances given are approximate only. Where Carter Jonas has been provided with a floorplan by a third party, we cannot guarantee that the floorplan has been measured in accordance with IPMS. Purchasers or prospective tenants must satisfy themselves of all of the aforementioned by independent inspection or otherwise. Our images only represent part of the property as it appeared at the time they were taken and do not represent the furnishings included; these are confirmed in a separate inventory. If you require further information, please contact us. *Administration fees may apply depending on tenancy type. Please contact your local branch for this information.