



60 LEOPARD HOUSE, PERCY TERRACE, BATH, BA2 3GE

£1,950 per month*

Carter Jonas

60 LEOPOLD HOUSE, PERCY TERRACE, BATH, SOMERSET, BA2 3GE

A ground floor, two bedroom, two bathroom apartment in the ever popular Bath Riverside development.

THE PROPERTY

A modern, ground floor two bedroom apartment in the Bath Riverside development with accommodation of open-plan Living Room/Kitchen with built in appliances of fridge/freezer, oven with hob and dishwasher, and living room open to the kitchen. There is a double bedroom with built in wardrobes, a bathroom with shower over bath and a large utility cupboard with plumbing for a washing machine. There is also a second double bedroom and a further bathroom. Offered part furnished. Available now.

EPC Band C. Council Tax Band C (please see Bath & North East Somerset website for current cost)

Mains electric, and metered mains water.

Communal boilers run by EON (supplier cannot be changed).

No Parking available for this flat.

Internet & Mobile: Further information on availability and speeds can be found on the Ofcom website.

At a rent of £1950.00 per calendar month: Holding deposit of 1 week's rent £450.00 (deducted from first month's rent)

Security deposit of 5 weeks rent £1713.94

OUTSIDE

Communal Garden



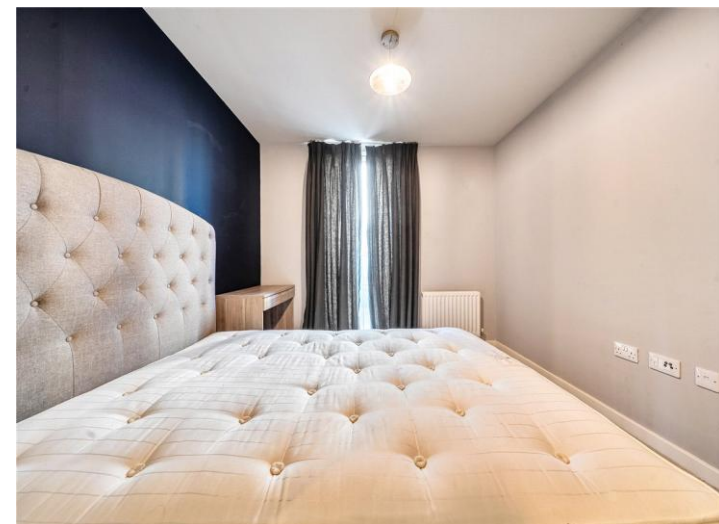
ADDITIONAL INFORMATION

Offers

Viewing Strictly by appointment

Local Authority - Council Tax Band C

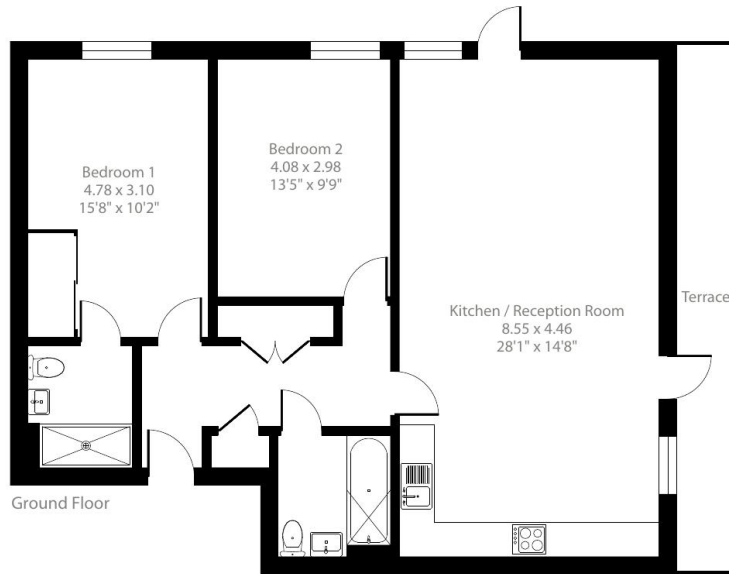
Directions





Leopold House, Percy Terrace, Bath, BA2

Approximate Area = 927 sq ft / 86.1 sq m
For identification only - Not to scale



Floor plan produced in accordance with RICS Property Measurement 2nd Edition, Incorporating International Property Measurement Standards (IPMS2 Residential). © nchecon 2026. Produced for Carter Jonas. REF: 1457384

Score	Energy rating	Current	Potential
92+	A		
81-91	B		
69-80	C	80 C	80 C
55-68	D		
39-54	E		
21-38	F		
1-20	G		

T: 01225 747250
5-6 Wood Street, Bath, Somerset, BA1 2JQ
E: bath.enquiries@carterjonas.co.uk



Exclusive UK affiliate of

CHRISTIE'S
INTERNATIONAL REAL ESTATE

Classification L2 - Business Data

IMPORTANT INFORMATION

These particulars are for general information purposes only and do not represent an offer or contract or part of one. Carter Jonas or anyone in their employment has made every attempt to ensure that the particulars and other information provided are as accurate as possible and they are not intended to amount to advice on which you should rely as being factually accurate. Full information which may be relevant to your decision regarding the property can be found on the property listing on carterjonas.co.uk or a separately available material information sheet, and we would advise you to confirm the details of any material information prior to any offer being submitted. You should not assume that the property has all necessary planning, building regulations or other consents and Carter Jonas has not tested any services, facilities, or equipment. Any measurements and distances given are approximate only. Where Carter Jonas has been provided with a floorplan by a third party, we cannot guarantee that the floorplan has been measured in accordance with IPMS. Purchasers or prospective tenants must satisfy themselves of all of the aforementioned by independent inspection or otherwise. Our images only represent part of the property as it appeared at the time they were taken and do not represent the furnishings included; these are confirmed in a separate inventory. If you require further information, please contact us. *Administration fees may apply depending on tenancy type. Please contact your local branch for this information.