



**WOODS MEWS, MAYFAIR, W1K**  
£26,000 per month\*

**Carter Jonas**

---

# WOODS MEWS, MAYFAIR, LONDON, W1K 7DW

- Furnished
- 4 Bedrooms
- 1 Reception
- 3 Bathrooms
  - 1 Kitchen
- 1 Utility Room
- 1 Guest cloakroom

## LOCATION

Ideally located just moments from the world-class shopping and dining of Oxford Street, as well as the open green spaces of Hyde Park, this exceptional home combines tranquillity with unrivalled convenience in the heart of Mayfair.

Nearest Tube: Marble Arch / Bond Street

## THE PROPERTY

A beautifully presented and newly redecorated three-bedroom mews house, quietly tucked away in one of Mayfair's most desirable residential mews.

This impressive home offers well-balanced and versatile accommodation arranged over multiple floors. The property comprises three spacious double bedrooms, each served by three modern bathrooms, alongside a separate study ideal for home working. The generous reception room provides an elegant entertaining space, complemented by a well-appointed kitchen.

Further enhancing the property is a dedicated gym/den area, perfect for leisure or additional living space. The house also benefits from excellent natural light throughout, along with a private patio and two balconies, offering rare outdoor space for a central London home.

A standout feature is the secure double garage, providing valuable off-street parking and storage.

A stunning newly redecorated three-bedroom mews house in the heart of Mayfair, offering exceptional living space, private outdoor areas and a double garage, moments from Oxford Street and Hyde Park.



## NHA

The deposit will be £ at a rental value of £6,000 (asking price)

Holding deposit = 1 weeks rent of £6,000

Deposit is 6 weeks rent (£6,000 pw = £36,000 deposit)

Heating & Hot Water - Mains Gas

Parking: Private Double Garage

Mobile phone coverage and speeds can be checked here:  
[checker.ofcom.org.uk](http://checker.ofcom.org.uk), however, all providers are predicted to have  
good levels of service inside at this property.

Broadband speeds can be checked here: [checker.ofcom.org.uk](http://checker.ofcom.org.uk).

---

## **ADDITIONAL INFORMATION**

---

Offers	Available for a minimum term of 12 months longer terms will be considered
--------	--

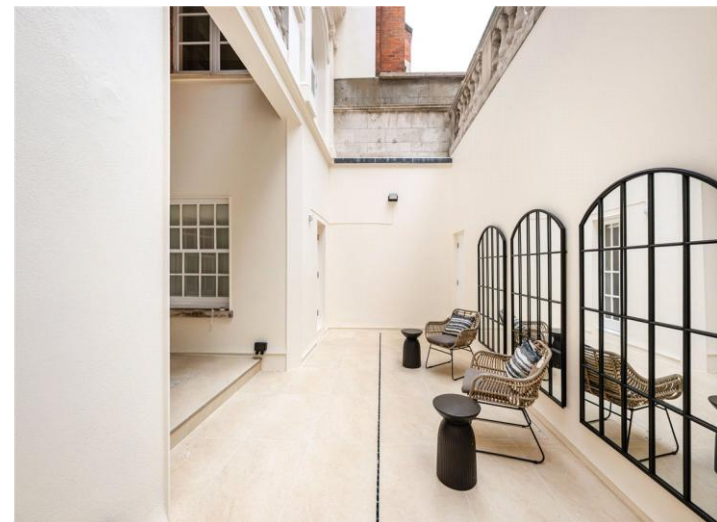
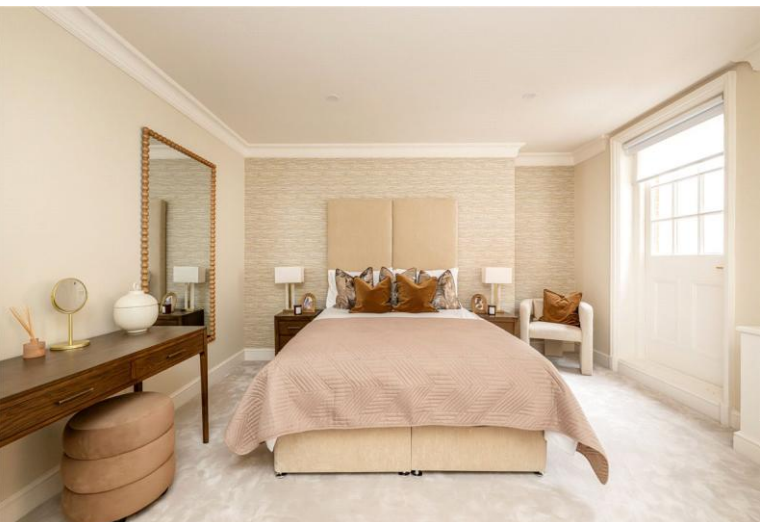
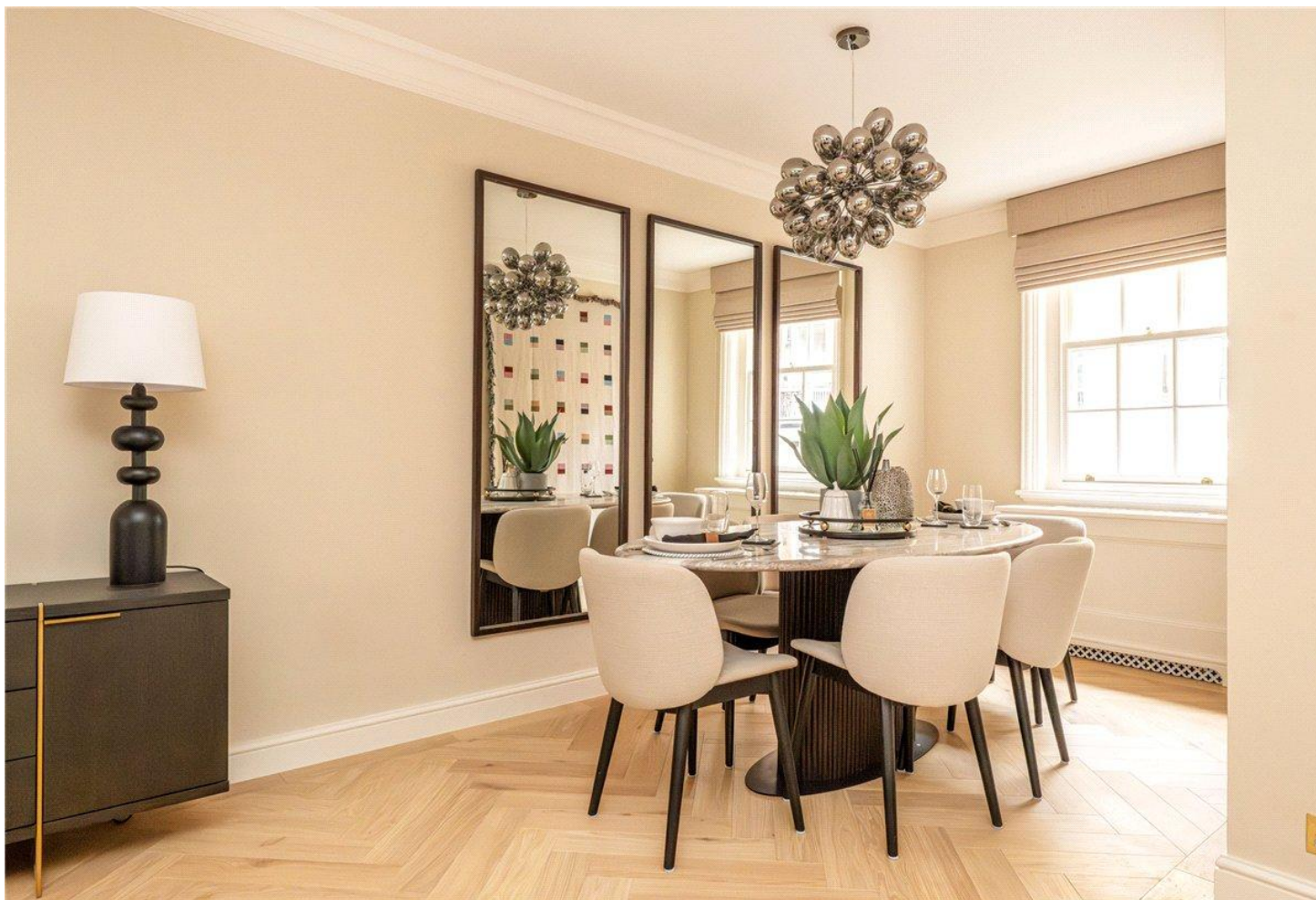
---

Viewing	Strictly by appointment
---------	-------------------------

---

Local Authority	Westminster City Council - Council Tax Band H
--------------------	---

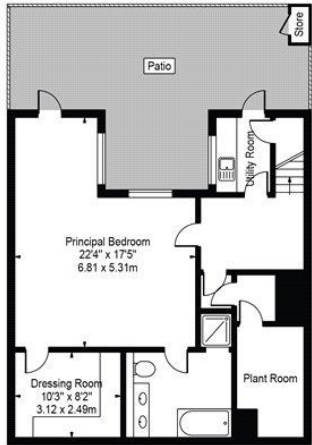
---



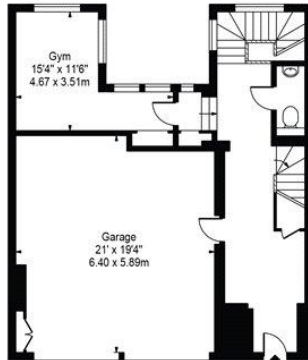
# Woods Mews

Approx. Gross Internal Area 3061 Sq Ft - 284.38 Sq M  
(Including Garage & Excluding Store)

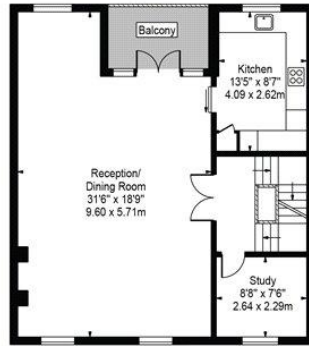
Approx. Gross Internal Area 2668 Sq Ft - 247.87 Sq M  
(Excluding Garage & Store)



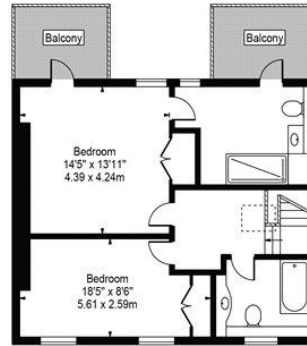
Lower Ground Floor  
(761 Sq Ft - 70.70 Sq M)



Ground Floor  
(818 Sq Ft - 75.99 Sq M)



First Floor  
(815 Sq Ft - 75.72 Sq M)



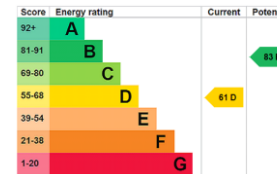
Second Floor  
(667 Sq Ft - 61.97 Sq M)



For Illustration Purposes Only - Not To Scale

This floor plan should be used as a general outline for guidance only and does not constitute in whole or in part an offer or contract. Any intending purchaser or lessee should satisfy themselves by inspection, searches, enquiries and full survey as to the correctness of each statement. Any areas, measurements or distances quoted are approximate and should not be used to value a property or be the basis of any sale or let.

Copyright Morriarti Photography & Design LTD



T: 020 7493 0676

18 Davies Street, Mayfair, London, W1K 3DS

E: mayfair.lettings@carterjonas.co.uk

A member of



Exclusive UK affiliate of

**CHRISTIE'S**  
INTERNATIONAL REAL ESTATE

## IMPORTANT INFORMATION

These particulars are for general information purposes only and do not represent an offer or contract or part of one. Carter Jonas or anyone in their employment has made every attempt to ensure that the particulars and other information provided are as accurate as possible and they are not intended to amount to advice on which you should rely as being factually accurate. Full information which may be relevant to your decision regarding the property can be found on the property listing on [carterjonas.co.uk](http://carterjonas.co.uk) or a separately available material information sheet, and we would advise you to confirm the details of any material information prior to any offer being submitted. You should not assume that the property has all necessary planning, building regulations or other consents and Carter Jonas has not tested any services, facilities, or equipment. Any measurements and distances given are approximate only. Where Carter Jonas has been provided with a floorplan by a third party, we cannot guarantee that the floorplan has been measured in accordance with IPMS. Purchasers or prospective tenants must satisfy themselves of all of the aforementioned by independent inspection or otherwise. Our images only represent part of the property as it appeared at the time they were taken and do not represent the furnishings included, these are confirmed in a separate inventory. If you require further information, please contact us. \*Administration fees may apply depending on tenancy type. Please contact your local branch for this information.