



**FLAT 8, KINGS COURT, PARSONAGE LANE, BATH, BA1 1ER**  
£1,650 per month\*

**Carter Jonas**



---

## A 4th floor, newly renovated Penthouse apartment in central Bath with 1 bedroom, 1 bathroom and a large terrace with views.

- Living Room
- Kitchen
- Bedroom
- Bathroom
- Balcony

### THE PROPERTY

We are pleased to be able to offer to the rentals market a recently converted apartment in the heart of Bath City Centre. Situated on the 4th floor of Kings Court in Parsonage Lane, the loft style apartment offers newly refurbished accommodation of Kitchen with appliances of oven with hob, dishwasher, fridge/freezer, washing machine and tumble dryer. There is a Sitting Room with sliding doors to a large west facing terrace, one bedroom with access to terrace and bathroom. The apartment would make a really wonderful home for those wanting to experience city life and benefits from city views. Heating is electric. Available early January 2026 and offered unfurnished. EPC Exempt Council Tax Band B. REGRETFULLY NO PARKING PERMIT AVAILABLE.

Available for an initial 12 month tenancy.

EPC Exempt as has Listed Exemption. Council Tax Band B (please see Bath & North East Somerset website for current cost)

Mains electric, and mains water.

Please note there is no parking available at this property and no parking permits available.

Internet & Mobile: Further information on availability and speeds can be found on the Ofcom website. Please note the internet is copper wire only.

At a rent of £1650 per calendar month:

Holding deposit of 1 week's rent £380.76

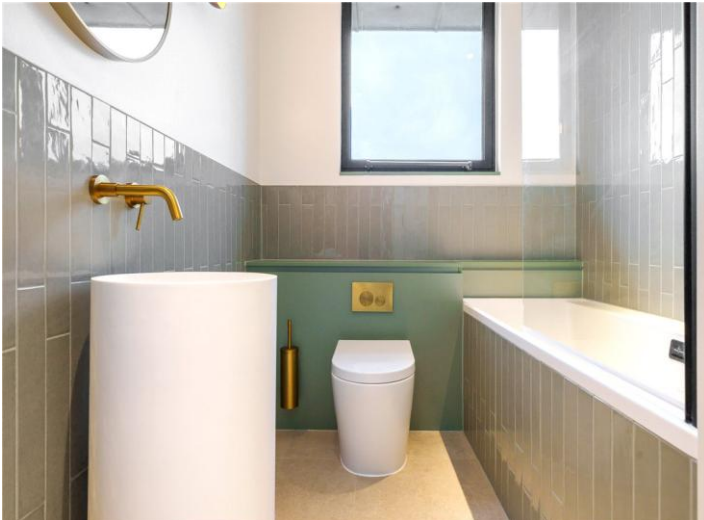
Security deposit of 5 weeks rent £1903.84





**ADDITIONAL INFORMATION**

Offers	Available for a minimum term of 12 months longer terms will be considered
Viewing	Strictly by appointment
Local Authority	- Council Tax Band B
Directions	

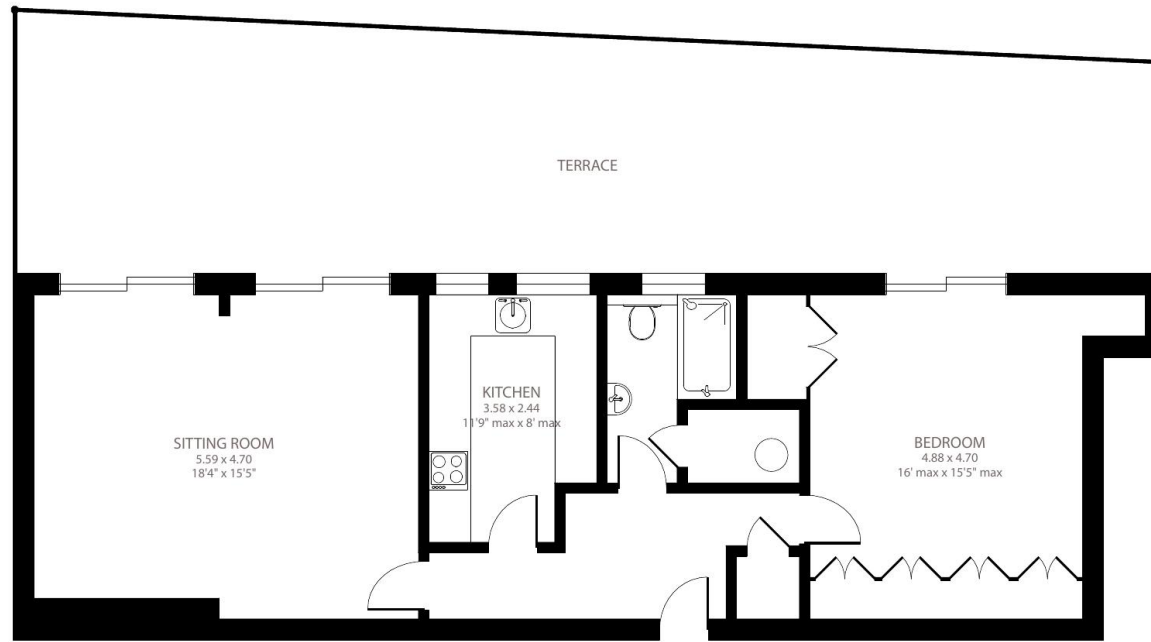




# Kings Court, Parsonage Lane, Bath, BA1

Approximate Area = 772 sq ft / 71.7 sq m

For identification only - Not to scale



FIRST FLOOR



Certified  
Property  
Measurer

Floor plan produced in accordance with RICS Property Measurement Standards incorporating International Property Measurement Standards (IPMS2 Residential). © nlcocom 2023. Produced for Carter Jonas. REF: 1011540

T: 01225 747250

5-6 Wood Street, Bath, Somerset, BA1 2JQ

E: bath@carterjonas.co.uk

A member of



Exclusive UK affiliate of

**CHRISTIE'S**  
INTERNATIONAL REAL ESTATE

Classification L2 - Business Data

## IMPORTANT INFORMATION

These particulars are for general information purposes only and do not represent an offer or contract or part of one. Carter Jonas or anyone in their employment has made every attempt to ensure that the particulars and other information provided are as accurate as possible and they are not intended to amount to advice on which you should rely as being factually accurate. Full information which may be relevant to your decision regarding the property can be found on the property listing on [carterjonas.co.uk](http://carterjonas.co.uk) or a separately available material information sheet, and we would advise you to confirm the details of any material information prior to any offer being submitted. You should not assume that the property has all necessary planning, building regulations or other consents and Carter Jonas has not tested any services, facilities, or equipment. Any measurements and distances given are approximate only. Where Carter Jonas has been provided with a floorplan by a third party, we cannot guarantee that the floorplan has been measured in accordance with IPMS. Purchasers or prospective tenants must satisfy themselves of all of the aforementioned by independent inspection or otherwise. Our images only represent part of the property as it appeared at the time they were taken and do not represent the furnishings included; these are confirmed in a separate inventory. If you require further information, please contact us. \*Administration fees may apply depending on tenancy type. Please contact your local branch for this information.