



BLANDFORD STREET, LONDON, W1U
£540 per week*

Carter Jonas

FLAT 1, BLANDFORD STREET, LONDON, W1U 7HU

Newly refurbished first floor apartment located moments from Marylebone High Street and trendy Chiltern Street.

- Fully Managed by The Portman Estate
- Refurbished studio apartment
- Separate fitted kitchen with dishwasher
- Bright studio room
- Bathroom with shower
- First floor
- Located within close proximity to Marylebone High

THE PROPERTY

Newly refurbished studio apartment with separate kitchen, studio room and bathroom.

The property is professionally managed by The Portman Estate.

Available for long term rental on an unfurnished basis, or furnished (at separate cost)

Blandford Street is in the heart of Marylebone, just a short distance from the upscale shops and restaurants of Marylebone Village. The vast fields of Regent's Park are also close by. Excellent transportation connections may be found at Bond Street (approximately 0.4 miles) and Baker Street (approximately 0.4 miles).

The Portman Estate is a prestigious property portfolio located in the heart of central London, covering 110 acres of prime real estate in Marylebone. Renting through The Portman Estate comes with the advantage of an in-house property management team, providing responsive, hands-on service to ensure residents' needs are met quickly and efficiently. This dedicated team helps maintain the quality of living, handling everything from routine maintenance to emergency repairs, making the rental experience hassle-free.



Holding deposit is 1 week's rent = £540 (at asking price)

Security deposit is 5 week's rent = £2,700 (at asking price £540 pw)

Council Tax Band D

For the latest information on broadband and mobile coverage, please visit /checker. Ofcom for the most up-to-date details.

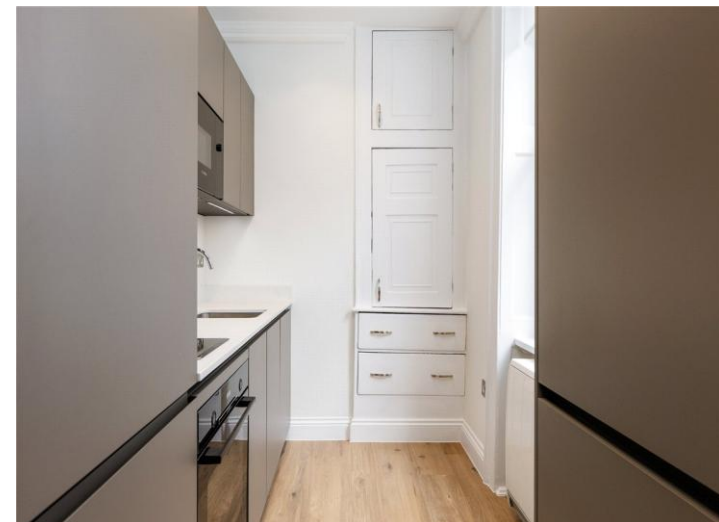
ADDITIONAL INFORMATION

Offers Available for a minimum term of 12 months longer terms will be considered

Viewing Strictly by appointment

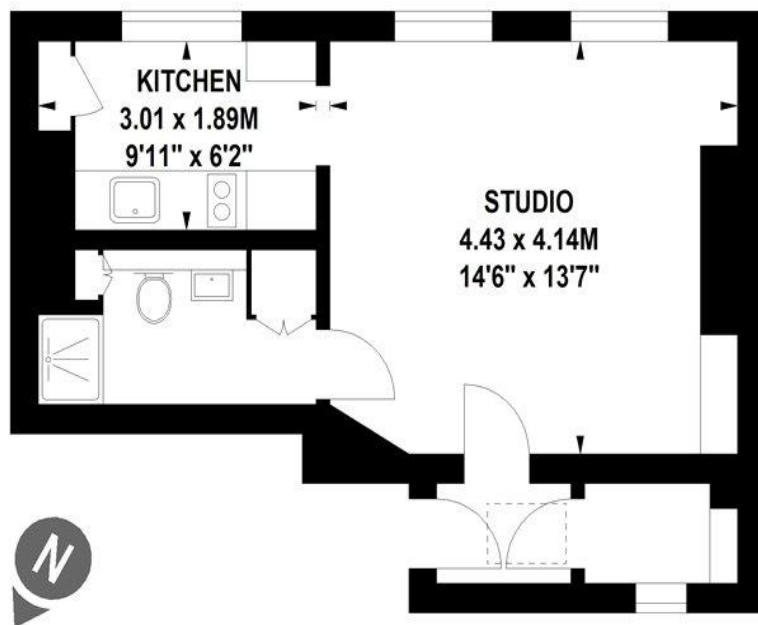
Local Authority Westminster City Council - Council Tax Band D

Score	Energy rating	Current	Potential
92+	A		
81-91	B		
69-80	C	70 C	75 C
55-68	D		
39-54	E		
21-38	F		
1-20	G		



Blandford Street, W1U

Approximate Gross Internal Area 33.82 sq m (364 sq ft)



First Floor

hydepark@cluttons.com

020 7262 2226

cluttons.com

Floor Plan produced for Cluttons by Mays Property Marketing © . Tel 020 3397 4594

Illustration for identification purposes only. Not to scale.

Orientation, measurements, and other details are approximate and for guidance only, purchasers should verify details independently.

Where a room has a sloping ceiling the dotted line marks 1.50M height, and all measurements shown are at floor level.

T: 020 7486 8866

37 New Cavendish Street, London, W1G 9TL

E: marylebone.lettings@carterjonas.co.uk

A member of



Exclusive UK affiliate of

CHRISTIE'S
INTERNATIONAL REAL ESTATE

Classification L2 - Business Data



IMPORTANT INFORMATION

These particulars are for general information purposes only and do not represent an offer or contract or part of one. Carter Jonas or anyone in their employment has made every attempt to ensure that the particulars and other information provided are as accurate as possible and they are not intended to amount to advice on which you should rely as being factually accurate. Full information which may be relevant to your decision regarding the property can be found on the property listing on carterjonas.co.uk or a separately available material information sheet, and we would advise you to confirm the details of any material information prior to any offer being submitted. You should not assume that the property has all necessary planning, building regulations or other consents and Carter Jonas has not tested any services, facilities, or equipment. Any measurements and distances given are approximate only. Where Carter Jonas has not provided with a floorplan by a third party, we cannot guarantee that the floorplan has been measured in accordance with IPMS. Purchasers or prospective tenants must satisfy themselves of all of the aforementioned by independent inspection or otherwise. Our images only represent part of the property as it appeared at the time they were taken and do not represent the furnishings included; these are confirmed in a separate inventory. If you require further information, please contact us. *Administration fees may apply depending on tenancy type. Please contact your local branch for this information.