



**SEYMOUR STREET, MARYLEBONE, W1H**  
£840 per week\*

**Carter Jonas**

---

## **SEYMOUR STREET, MARYLEBONE, LONDON, W1H 7HZ**

## **Charming one-bedroom apartment on the first floor of an appealing period property.**

- Professionally managed by the Portman Estate
- Located on Seymour Street
- One Bedroom
- One Bathroom
- Open-plan Kitchen/Reception
- First Floor
- Unfurnished (or furnished at separate cost)

### **THE PROPERTY**

This delightful property includes modern open plan fitted kitchen reception with wood flooring and full height windows opening to ornamental balconies, modern bathroom and double bedroom with ample fitted wardrobes.

The property is professionally managed by the Portman Estate.

Available for long term rental on an unfurnished basis, rental furniture is available at separate cost.

Seymour Street is located on the luscious Hyde Park Estate, close to the north of Hyde Park, one of the most famous urban parks worldwide. Mayfair and Knightsbridge are both within a leisurely stroll, as are the West End, Marylebone, Portman Village, the artisan clothing, and food stores of Connaught Street, and many more locations. It is conveniently close to Paddington stations, which are home to the Heathrow Express, National Rail, Circle, District, Bakerloo, Crossrail, and Hammersmith & City Lines, and Marble Arch Underground Station, which is dedicated to the Central line and is just 0.2 miles away.

The Portman Estate is a prestigious property portfolio located in the heart of central London, covering 110 acres of prime real estate in Marylebone. Renting through The Portman Estate comes with the advantage of an in-house property management team, providing responsive, hands-on service to ensure residents' needs are met quickly and efficiently. This dedicated team helps maintain the quality of living, handling everything from routine maintenance to emergency repairs, making the rental experience hassle-free.



Holding deposit is 1 weeks rent = £840 pw (at asking price).

Security deposit is 5 weeks rent = £4,200 (at asking price of £840 pw).

Council Tax Band E

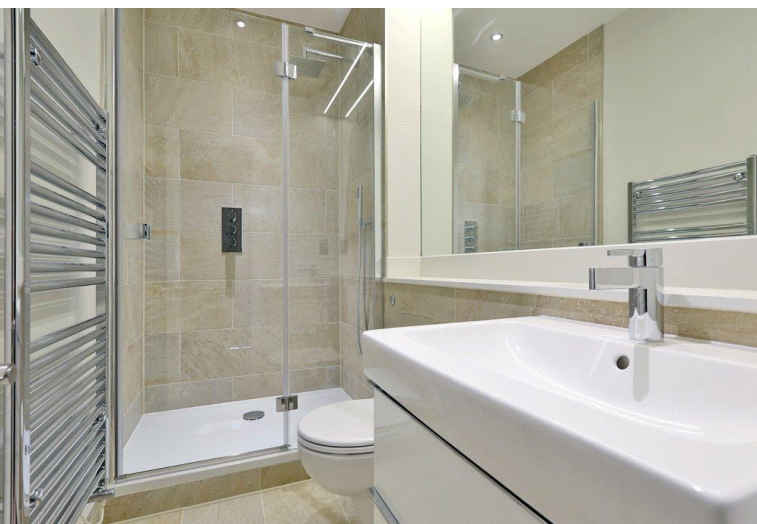
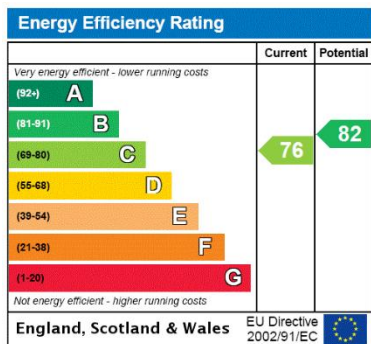
For the latest information on broadband and mobile coverage, please visit /checker. Ofcom for the most up-to-date details

## ADDITIONAL INFORMATION

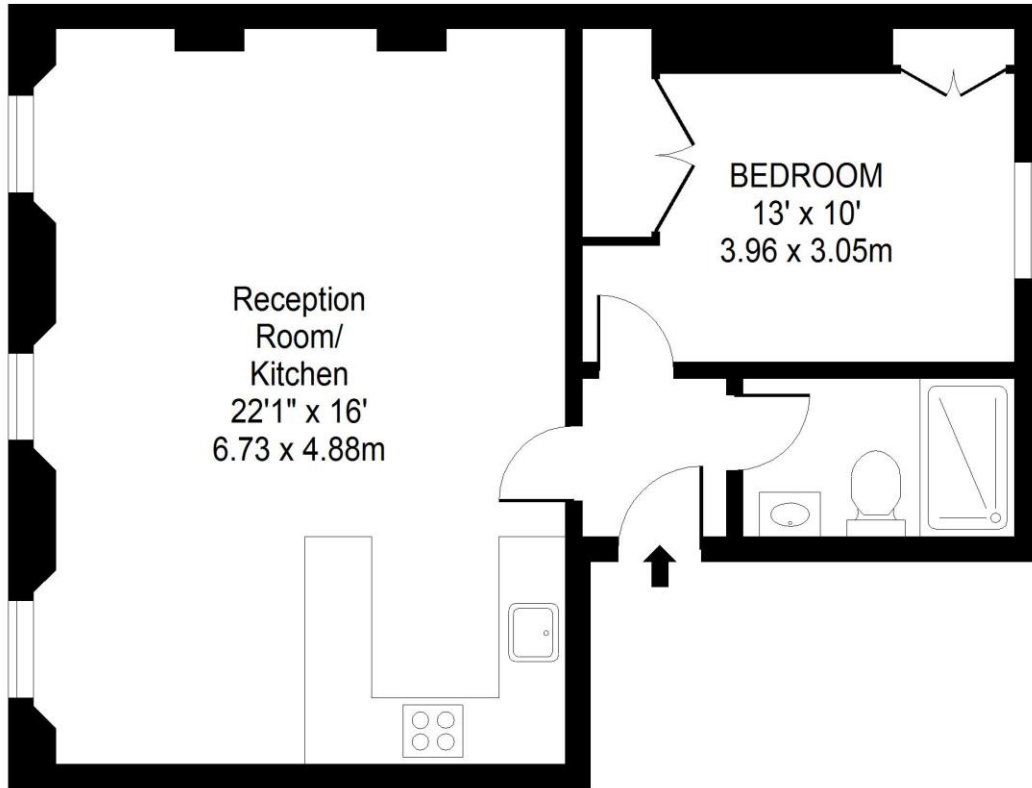
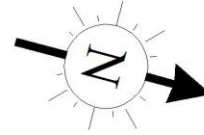
Offers Available for a minimum term of 12 months longer terms will be considered

Viewing Strictly by appointment

Local Authority City of Westminster - Selective Licences - Council Tax Band E



# 24 SEYMOUR STREET



Approx. Gross Internal Area 557 Sq Ft - 51.75 Sq M

For Illustrative Purposes Only - Not To Scale

T: 020 7486 8866

37 New Cavendish Street, London, W1G 9TL

E: marylebone.lettings@carterjonas.co.uk

A member of



Exclusive UK affiliate of

**CHRISTIE'S**  
INTERNATIONAL REAL ESTATE

Classification L2 - Business Data

## IMPORTANT INFORMATION

These particulars are for general information purposes only and do not represent an offer or contract or part of one. Carter Jonas or anyone in their employment has made every attempt to ensure that the particulars and other information provided are as accurate as possible and they are not intended to amount to advice on which you should rely as being factually accurate. Full information which may be relevant to your decision regarding the property can be found on the property listing on [carterjonas.co.uk](http://carterjonas.co.uk) or a separately available material information sheet, and we would advise you to confirm the details of any material information prior to any offer being submitted. You should not assume that the property has all necessary planning, building regulations or other consents and Carter Jonas has not tested any services, facilities, or equipment. Any measurements and distances given are approximate only. Where Carter Jonas has been provided with a floorplan by a third party, we cannot guarantee that the floorplan has been measured in accordance with IPMS. Purchasers or prospective tenants must satisfy themselves of all of the aforementioned by independent inspection or otherwise. Our images only represent part of the property as it appeared at the time they were taken and do not represent the furnishings included; these are confirmed in a separate inventory. If you require further information, please contact us. \*Administration fees may apply depending on tenancy type. Please contact your local branch for this information.