



MIDDLE WAY, OXFORD, OX2

£1,700 per month*

Carter Jonas

FLAT 11, MARTIN COURT, MIDDLE WAY, OXFORD, OXFORDSHIRE, OX2 7LF

This one-bedroom apartment located in the heart of Summertown. This property is a must see and offered furnished.

- Hallway
- Kitchen
- Living room
- Bedroom
- Family bathroom
- Permit parking available
- Fully furnished

THE PROPERTY

This fully furnished second-floor apartment offers comfortable and stylish living with a recently refurbished kitchen.

The living room features floor-to-ceiling windows that flood the space with natural light. The well-appointed double bedroom includes built-in storage. The bathroom is fitted with a shower over the bath

Perfectly located with easy access to Summertown, Oxford city centre, and University departments.

Available furnished from end of June 2026.

EPC Rating (D). Council Tax Band (C) (please see Oxford City Council Website for current cost)

No access to Loft. Mains gas, electricity, water and drainage.

Internet & Mobile: Further information on availability and speeds can be found at checker.ofcom.org.uk

Flood Zone (1) – Low

At a rent of £1,700 per calendar month

Holding deposit of 1 week's rent £392

Security deposit of 5 weeks rent £1961

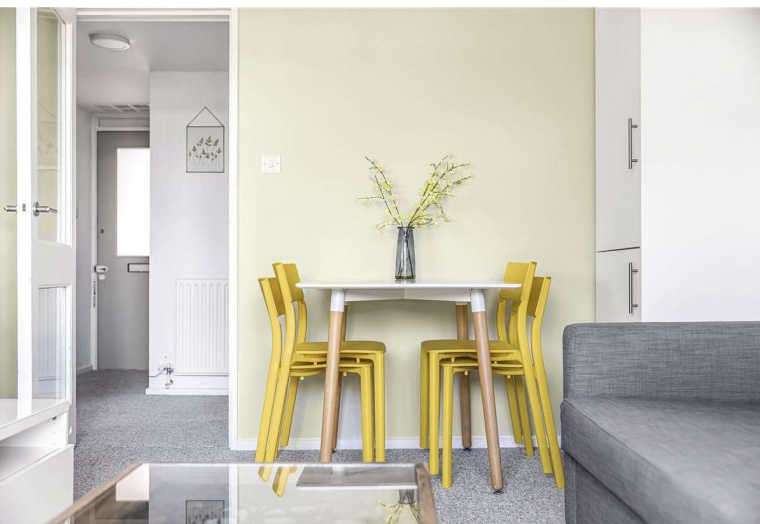


ADDITIONAL INFORMATION

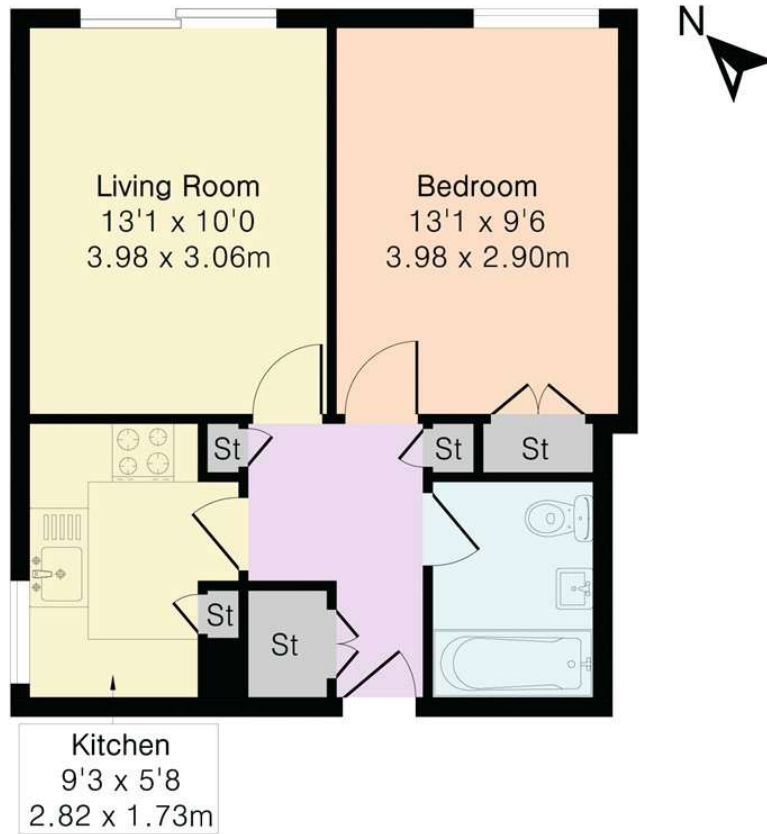
Offers Available for a minimum term of 12 months longer terms will be considered

Viewing Strictly by appointment

Local Authority Oxford City Council - Council Tax Band C



Approximate Gross Internal Area 445 sq ft - 41 sq m



Score	Energy rating	Current	Potential
92+	A		
81-91	B		
69-80	C		
55-68	D	58 D	75 C
39-54	E		
21-38	F		
1-20	G		



Floor plan produced in accordance with RICS Property Measurement 2nd Edition. Although Pink Plan Ltd ensures the highest level of accuracy, measurements of doors, windows and rooms are approximate and no responsibility is taken for error, omission or misstatement. These plans are for representation purposes only and no guarantee is given on the total square footage of the property within this plan. The figure icon is for initial guidance only and should not be relied on as a basis of valuation.

Carter Jonas

T: 01865 511444

Mayfield House, 256 Banbury Road, Oxford, Oxfordshire, OX2 7DE

E: oxford.lettings@carterjonas.co.uk



Exclusive UK affiliate of

CHRISTIE'S
INTERNATIONAL REAL ESTATE

IMPORTANT INFORMATION

These particulars are for general information purposes only and do not represent an offer or contract or part of one. Carter Jonas or anyone in their employment has made every attempt to ensure that the particulars and other information provided are as accurate as possible and they are not intended to amount to advice on which you should rely as being factually accurate. Full information which may be relevant to your decision regarding the property can be found on the property listing on carterjonas.co.uk or a separately available material information sheet, and we would advise you to confirm the details of any material information prior to any offer being submitted. You should not assume that the property has all necessary planning, building regulations or other consents and Carter Jonas has not tested any services, facilities, or equipment. Any measurements and distances given are approximate only. Where Carter Jonas has been provided with a floorplan by a third party, we cannot guarantee that the floorplan has been measured in accordance with IPMS. Purchasers or prospective tenants must satisfy themselves of all of the aforementioned by independent inspection or otherwise. Our images only represent part of the property as it appeared at the time they were taken and do not represent the furnishings included; these are confirmed in a separate inventory. If you require further information, please contact us. *Administration fees may apply depending on tenancy type. Please contact your local branch for this information.