



CHESTERFIELD HILL, MAYFAIR, W1J
£6,900 per week*

Carter Jonas

CHESTERFIELD HILL, MAYFAIR, LONDON, W1J

A Grade II Listed townhouse of approximately 3,960 square feet.

- 6 bedrooms
- 1 reception room
- 5 bathrooms
- Leisure Facilities
- Lift
- Patio
- Terrace Town House
- Utility room
- Vault

THE PROPERTY

Recently renovated, the house with a lift is set over seven floors and is centrally located in Mayfair close to both Green Park and Hyde Park.

Beautifully presented behind its restored façade, and benefitting from a private patio and terrace, along with a wealth of luxurious detailing and technology including a secure photo entry system, integrated KNX panels to control lighting, heating, air conditioning and electric blinds, under floor heating, Control4 music system, Thyssen Krupp lift and CAT 6 cabling throughout, Gaggenau appliances and bespoke cabinetry.

Mayfair is London's most fashionable destination. With London's finest buildings, largest concentration of luxury hotels, best restaurants, bars, shopping, open spaces and hidden treasures all nestled together in a beautiful village setting.

NHA

The deposit will be £41,400 at a rental value of £6,900 (asking price)

Holding deposit = 1 weeks rent of £6,900

Deposit is 6 weeks rent (£6,900 pw = £41,400 deposit)



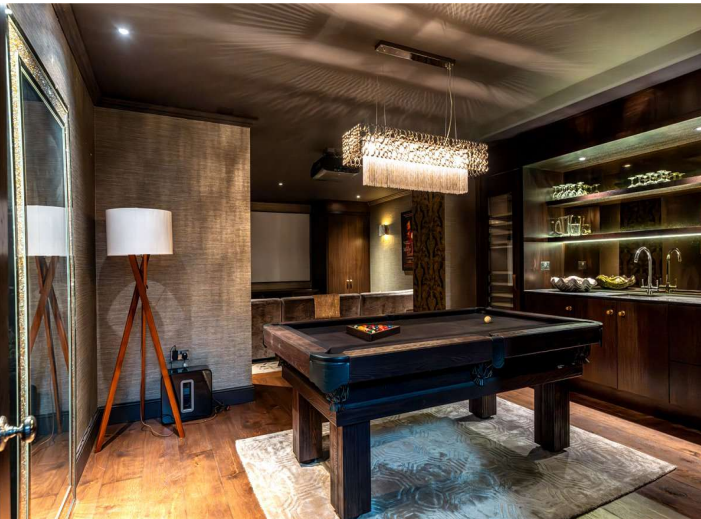
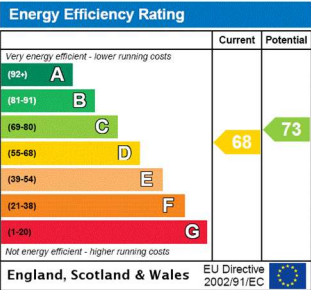
ADDITIONAL INFORMATION

Offers Available for a minimum term of 12 months longer terms will be considered

Viewing Strictly by appointment

Local Authority Westminster County Council - Council Tax Band H

- Minimum term 12 months
- Council Tax Band H
- Boiler and radiators mains gas
- Underfloor heating mains gas
- Programmer, room thermostat and TRVs
- Time and temperature zone control
- Full fibre broadband connection



Chesterfield Hill
 Approx. Gross Internal Area 3960 Sq Ft - 367.90 Sq M
 (Including Eaves Storage, Restricted Height Area & Excluding Vault)
 Approx. Gross Internal Area 3723 Sq Ft - 345.88 Sq M
 (Excluding Vault, Eaves Storage & Restricted Height Area)
 Approx. Gross Internal Area Of Vault 93 Sq Ft - 8.64 Sq M



For Illustration Purposes Only - Not To Scale

This floor plan should be used as a general outline for guidance only and does not constitute in whole or in part an offer or contract.
 Any intending purchaser or lessee should satisfy themselves by inspection, searches, enquiries and full survey as to the correctness of each statement.
 Any areas, measurements or distances quoted are approximate and should not be used to value a property or be the basis of any sale or let.
 Copyright Morriarth Photography & Design LTD



T: 020 7493 0676

18 Davies Street, Mayfair, London, W1K 3DS

E: mayfair@carterjonas.co.uk

A member of



Exclusive UK affiliate of

CHRISTIE'S
 INTERNATIONAL REAL ESTATE

IMPORTANT INFORMATION

These particulars are for general information purposes only and do not represent an offer or contract or part of one. Carter Jonas or anyone in their employment has made every attempt to ensure that the particulars and other information provided are as accurate as possible and they are not intended to amount to advice on which you should rely as being factually accurate. Full information which may be relevant to your decision regarding the property can be found on the property listing on carterjonas.co.uk or a separately available material information sheet, and we would advise you to confirm the details of any material information prior to any offer being submitted. You should not assume that the property has all necessary planning, building regulations or other consents and Carter Jonas has not tested any services, facilities, or equipment. Any measurements and distances given are approximate only. Where Carter Jonas has been provided with a floorplan by a third party, we cannot guarantee that the floorplan has been measured in accordance with IPMS. Purchasers or prospective tenants must satisfy themselves of all of the aforementioned by independent inspection or otherwise. Our images only represent part of the property as it appeared at the time they were taken and do not represent the furnishings included; these are confirmed in a separate inventory. If you require further information, please contact us. *Administration fees may apply depending on tenancy type. Please contact your local branch for this information.