



HIGH STREET
Cottenham

Carter Jonas

HIGH STREET, COTTENHAM, CAMBRIDGE, CB24 8TX

- Cambridge City Centre – approx. 7.8 miles
- Cambridge North Railway – approx. 6 miles
- A14 – approx. 4 miles

Exceptional Grade II Listed property • Four well-proportioned bedrooms, offering a flexible layout • Unspoilt character, rich in period features throughout • Versatile living spaces offering a flexible layout with rooms that adapt easily • Charming village green outlook • Off-street parking & double garage in central village location

DESCRIPTION

Believed to be the oldest surviving house in Cottenham, this exceptional Grade II listed property offers a rare opportunity to own a piece of living history. Thought to date back to the 15th century, with origins most likely around 1450, the home is steeped in character and retains a wealth of unspoilt period features – all while offering the practicality and proportions of a versatile four-bedroom layout.

The downstairs accommodation includes a spacious dining room, where the inglenook fireplace forms a striking centrepiece. This leads into the kitchen, a more recent addition fitted with a range of wall and base units and finished with traditional stone flooring. Adjoining the kitchen is a delightful sun room, hand-crafted with oak beam work to complement the historic style of the property, and offering lovely views over the garden. A functional utility room is also accessed from the kitchen.

A REMARKABLE GRADE II LISTED MEDIEVAL HOME IN THE HEART OF COTTENHAM. HISTORICALLY RICH HOME, BEAUTIFULLY PRESERVED AND THOUGHTFULLY ADAPTED FOR MODERN LIVING.



To the other side of the home, the generously sized living room enjoys dual-aspect windows with views over both the village green and the walled garden, and benefits from the other side of the inglenook fireplace. From here, you'll find the fourth bedroom, which has an adjoining shower room and has previously served well as a playroom or home office.

Upstairs, the main staircase leads to a spacious landing that has previously been used as a study, as well as the principal bedroom, complete with a charming window seat overlooking the garden, and a bathroom. A secondary staircase from the living room provides access to two further double bedrooms, both of which showcase the original beam work and offer excellent proportions.

NOTABLE HISTORICAL FEATURES

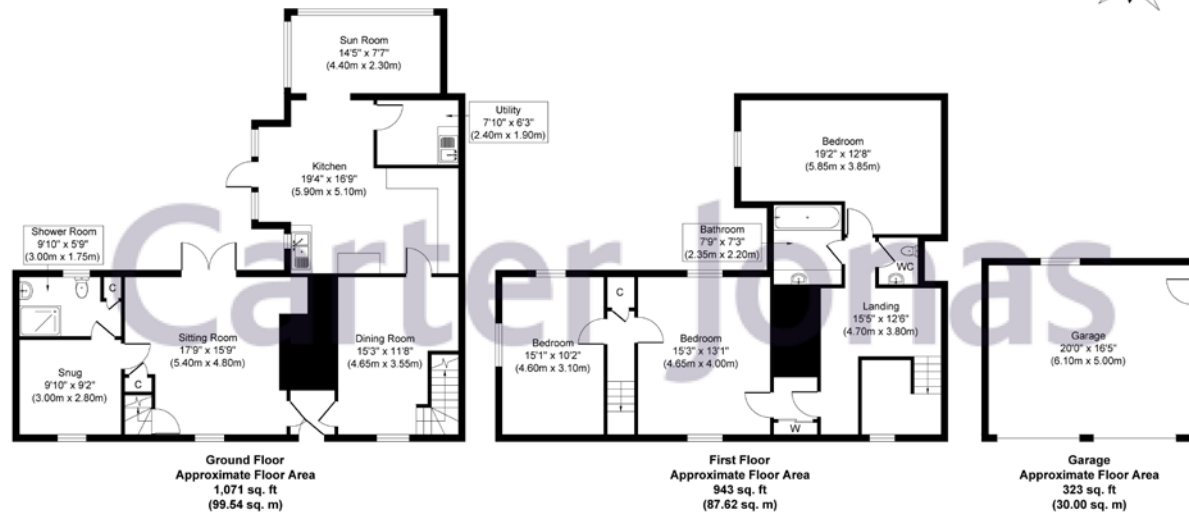
The property also retains several fascinating period details, including vertical scorch marks on the impressive dining room mantel beam, believed to be seventeenth-century taper burns made as a protective ritual. Beneath the same inglenook, a 'witch bottle', a type of historic charm said to protect against negative influences, was discovered during previous works and reburied under the hearth. Additional features include wooden panelling and a carved frieze above the door between the sitting room and hallway, thought to date from the sixteenth or seventeenth century, and a Tudor-style rose motif frieze visible above the door from the sitting room to the study.

The owner note that they 'were seduced by the idea of being custodians or all this history - like living in our own tiny museum which is also a home - and by the thought of being part of such a long unbroken thread, of people and families living between these same walls, sitting by the same fireside'.

OUTSIDE

The property benefits from off-street parking, a double garage, and a beautiful partially walled garden, offering privacy and a peaceful retreat.





Whilst every attempt has been made to ensure the accuracy of the floor plan contained here, measurements of doors, windows, rooms and any other items are approximate and no responsibility is taken for any error, omission, or mis-statement. The measurements should not be relied upon for valuation, transaction and/or funding purposes. This plan is for illustrative purposes only and should be used as such by any prospective purchaser or tenant. The services, systems and appliances shown have not been tested and no guarantee as to their operability or efficiency can be given.

Copyright V360 Ltd 2025 | www.houseviz.com

Cambridge South 01223 403330

cambridgesales@carterjonas.co.uk

The Marque, 141 Hills Road, Cambridge, CB2 8RJ

carterjonas.co.uk

Offices throughout the UK

Exclusive UK affiliate of

CHRISTIE'S
INTERNATIONAL REAL ESTATE



IMPORTANT INFORMATION

These particulars are for general information purposes only and do not represent an offer of contract or part of one. Carter Jonas has made every attempt to ensure that the particulars and other information provided are as accurate as possible and are not intended to amount to advice on which you should rely as being factually accurate. You should not assume that the property has all necessary planning, building regulations or other consents and Carter Jonas have not tested any services, facilities or equipment. Any measurements and distances given are approximate only. Purchasers must satisfy themselves of all of the aforementioned by independent inspection or otherwise. Although we make reasonable efforts to update our information, neither Carter Jonas LLP nor anyone in its employment or acting on its behalf makes any representations warranties or guarantees, whether express or implied, in relation to the property, or that the content in these particulars is accurate, complete or up to date. Our images only represent part of the property as it appeared at the time they were taken. If you require further information please contact us.