



**SHAKESPEARE DRIVE, BICESTER, OX26**

£1,950 per month\*

**Carter Jonas**

---

# SHAKESPEARE DRIVE, BICESTER, OXFORDSHIRE, OX26 2LU

- Open plan living
- Newly fitted kitchen
- Newly fitted shower room
- 4 bedrooms
- Ensuite bathroom
- Double garage
- Off road parking for 2

## THE PROPERTY

Accommodation consists of entrance hall, open plan living/dining space with an electric fireplace and hard wood flooring, newly fitted kitchen with breakfast bar area and an internal door leading to the garage. The 4 bedrooms are all double bedrooms, newly decorated in a neutral colour with newly fitted carpets. The main bedroom has a fitted wardrobe and a bathroom with a shower over the bath. The main family shower is newly fitted with a large shower enclosure.

Externally the property has gardens to the front and rear, the rear garden is very private as other houses in the area are all on one level. The property also has a large integrated garage with good storage and off road parking for 2 cars.

Council tax: Band E (Please see Cherwell Council for current costs and more information). EPC Rating D.

Available late July.

No access to Loft. Mains gas, electricity, water and drainage. Gas central Heating.

Internet & Mobile: Further information on availability and speeds can be found at [checker.ofcom.org.uk](http://checker.ofcom.org.uk)

Flood risk – Very Low

At a rent of £1,950 per calendar month

Holding deposit of 1 week's rent £450

Security deposit of 5 weeks rent £2250

A newly refurbished 4 bedroom bungalow, located in a popular location in Bicester.



---

## **ADDITIONAL INFORMATION**

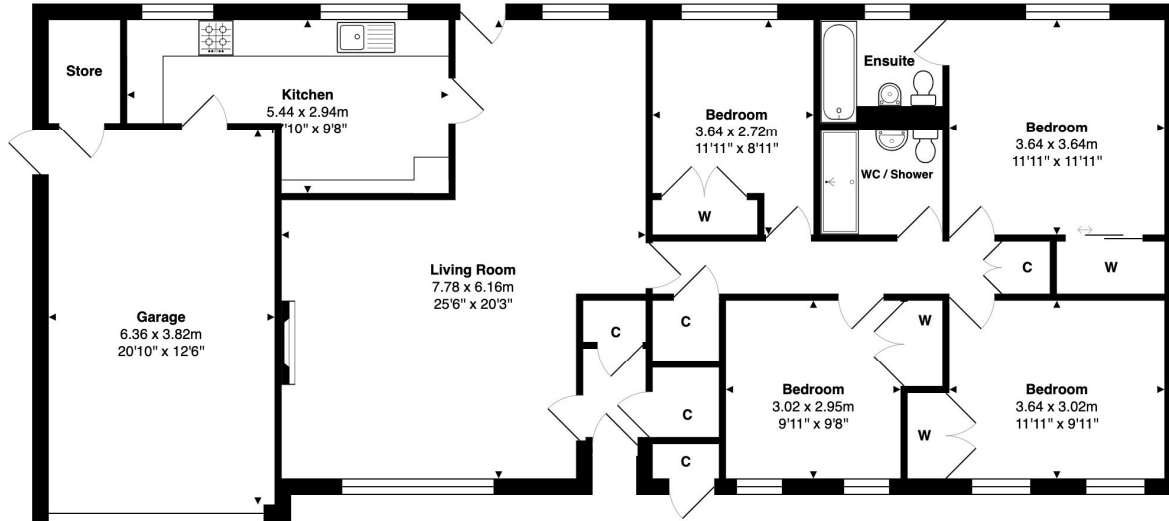
---

Viewing Strictly by appointment

Local Authority Cherwell District Council - Council Tax Band E

---

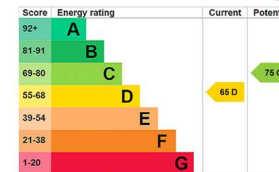
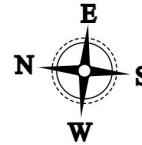




**Approximate Gross Internal Area**

Main House 119.9 m<sup>2</sup> / 1290 ft<sup>2</sup>  
 Garage and Store 24.3 m<sup>2</sup> / 261 ft<sup>2</sup>  
 Total 147.7 m<sup>2</sup> / ft<sup>2</sup>

Whilst every attempt has been made to ensure the accuracy of the floor plan contained here, measurements of doors, windows, rooms, and any other items are approximate. No responsibility is taken for any error, omission, or mis-statement. This plan is for illustrative purpose only and should be used as such.  
 Drawn by E8 Property Services. www.e8ps.co.uk



**T: 01865 511444**

Mayfield House, 256 Banbury Road, Oxford, Oxfordshire, OX2 7DE

E: oxford.lettings@carterjonas.co.uk



Exclusive UK affiliate of

**CHRISTIE'S**  
INTERNATIONAL REAL ESTATE

Classification L2 - Business Data

**IMPORTANT INFORMATION**

These particulars are for general information purposes only and do not represent an offer or contract or part of one. Carter Jonas or anyone in their employment has made every attempt to ensure that the particulars and other information provided are as accurate as possible and they are not intended to amount to advice on which you should rely as being factually accurate. Full information which may be relevant to your decision regarding the property can be found on the property listing on carterjonas.co.uk or a separately available material information sheet, and we would advise you to confirm the details of any material information prior to any offer being submitted. You should not assume that the property has all necessary planning, building regulations or other consents and Carter Jonas has not tested any services, facilities, or equipment. Any measurements and distances given are approximate only. Where Carter Jonas has been provided with a floorplan by a third party, we cannot guarantee that the floorplan has been measured in accordance with IPMS. Purchasers or prospective tenants must satisfy themselves of all of the aforementioned by independent inspection or otherwise. Our images only represent part of the property as it appeared at the time they were taken and do not represent the furnishings included; these are confirmed in a separate inventory. If you require further information, please contact us. \*Administration fees may apply depending on tenancy type. Please contact your local branch for this information.