



**ARMITAGE APARTMENTS, 228 GREAT PORTLAND STREET, W1W**  
£900 per week\*

**Carter Jonas**



# **FLAT 23, ARMITAGE APARTMENTS, 228 GREAT PORTLAND STREET, LONDON, W1W 5QP**

- One Bedroom
- One Bathroom
- Fully Fitted Kitchen
- Two beautifully designed bathrooms
- Weekly Housekeeping (1x per week)
- Access to Exclusive Residents' Gym
- Daytime Concierge
- 24 Hour CCTV
- Fast WIFI Included
- Sky HD TV

## **THE PROPERTY**

A well-presented one-bedroom apartment on the lower ground floor, located on Great Portland Street, W1. The property features a modern open-plan kitchen and reception area, a comfortable double bedroom with built-in storage, and a contemporary bathroom. Finished to a high standard throughout, the apartment offers a bright, stylish living space in a prime central London location, close to local amenities and excellent transport links.

Great Portland Street is a vibrant thoroughfare in London, known for its mix of shops, eateries, and cultural attractions. Situated in the heart of the city. It serves as a vibrant hub for locals and visitors alike. The area benefits from excellent transport links, with the Great Portland Street, Regent's Park, and Warren Street tube stations in proximity. These well-connected stations facilitate seamless travel, allowing residents and tourists to explore the city effortlessly.

Complimentary services included within this are a weekly housekeeping service (including linen and towel change), Sky HD TV, Fibre Optic Broadband (WIFI) and access to the private residents' gym- access via bookings.

Rate based on 12+ month contract. EXCLUSIVE of utility bills and council tax (flexible terms available)

## Newly refurbished one bedroom, one-bathroom lower ground floor, serviced apartment, located in Marylebone.





£900pw (excluding all bills and council tax and including utility bills)

Holding deposit is 1 week's rent = £900 (at asking price)

Security deposit is 5 week's rent = £4,500 (at asking price £900pw)

Minimum Term 12 months

Council Tax Band TBC

For the latest information on broadband and mobile coverage, please visit [checker.ofcom](https://www.checker.ofcom.gov.uk/) for the most up-to-date details.

## ADDITIONAL INFORMATION

Offers	Available for a minimum term of 12 months longer terms will be considered
Viewing	Strictly by appointment
Local Authority	Westminster City Council - Council Tax Band NA

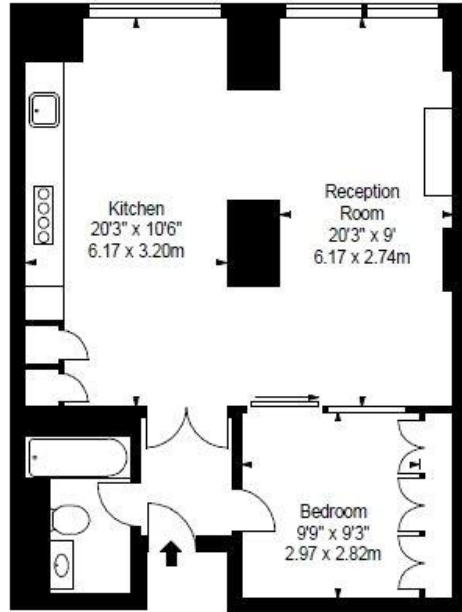
Score	Energy rating	Current	Potential
92+	A		
81-91	B		
69-80	C	78 C	78 C
55-68	D		
39-54	E		
21-38	F		
1-20	G		



## GREAT PORTLAND STREET, W1

APPROX. GROSS INTERNAL AREA \*  
643 Ft<sup>2</sup> - 59.73 M<sup>2</sup>

ILLUSTRATION FOR IDENTIFICATION PURPOSES ONLY. NOT TO SCALE  
\* As Defined by RICS - Code of Measuring Practice



LOWER GROUND FLOOR

**BKR**

[www.bkrfloorplans.co.uk](http://www.bkrfloorplans.co.uk)  
T: 0845 257 2023  
© BKR 2012

**T: 020 7486 8866**

37 New Cavendish Street, London, W1G 9TL

E: [marylebone.lettings@carterjonas.co.uk](mailto:marylebone.lettings@carterjonas.co.uk)

A member of



*Exclusive UK affiliate of*

**CHRISTIE'S**  
INTERNATIONAL REAL ESTATE

Classification L2 - Business Data



### IMPORTANT INFORMATION

These particulars are for general information purposes only and do not represent an offer or contract or part of one. Carter Jonas or anyone in their employment has made every attempt to ensure that the particulars and other information provided are as accurate as possible and they are not intended to amount to advice on which you should rely as being factually accurate. Full information which may be relevant to your decision regarding the property can be found on the property listing on [carterjonas.co.uk](http://carterjonas.co.uk) or a separately available material information sheet, and we would advise you to confirm the details of any material information prior to any offer being submitted. You should not assume that the property has all necessary planning, building regulations or other consents and Carter Jonas has not tested any services, facilities, or equipment. Any measurements and distances given are approximate only. Where Carter Jonas has been provided with a floorplan by a third party, we cannot guarantee that the floorplan has been measured in accordance with IPMS. Purchasers or prospective tenants must satisfy themselves of all of the aforementioned by independent inspection or otherwise. Our images only represent part of the property as it appeared at the time they were taken and do not represent the furnishings included; these are confirmed in a separate inventory. If you require further information, please contact us. \*Administration fees may apply depending on tenancy type. Please contact your local branch for this information.