



**DROVE COTTAGE,
YATESBURY**

Carter Jonas

DROVE COTTAGE, 24A YATESBURY, SN11 8YG

AMENITIES

- Semi-Detached
- No onward chain
- Potential to extend
- Three Bedrooms
- Garden
- Parking
- Village location

SITUATION

Drove Cottage is in an elevated position, within the heart of the peaceful, rural hamlet of Yatesbury in an Area of Outstanding Natural Beauty. Located off the A4, within walking distance of the historic village of Avebury, c.6 miles to the west of Marlborough c. 6 miles to the east of Calne. These popular market towns provide a wide range of shopping and leisure services, while the larger regional centres of Swindon, Chippenham and Bath complement these services further. Communications are excellent, with Junctions 15 and 16 of the M4 lying to the north. Chippenham provides a fast and regular main line service to London Paddington (journey time from 63 mins). There is an excellent range of schools in the area, including a well-regarded primary school in Cherhill, St Mary's and St Margaret's, Calne, Dauntsey's West Lavington and Marlborough College. There is a wide range of leisure opportunities with golf at the North Wilts and Marlborough golf clubs, and many opportunities for walking, cycling, riding and fishing in the area.

DESCRIPTION

Drove Cottage is a well-presented three-bedroom, semi-detached property, set in a quiet country lane and is offered with no onward chain.

Upon entering the property, you are greeted into the hall where all the reception rooms are accessed. To the left is the open plan kitchen/sitting room with a door opening out to the rear garden. The kitchen is fitted with a range of wall and base units, breakfast bar and integrated appliances. There is a second reception room which could be used as a formal dining room or as a sitting room and benefits from double doors opening out to the rear garden. A cloakroom with utility space completes the downstairs accommodation.

Upstairs you will find three double bedrooms, with two of them benefitting from having built in wardrobes. The bedrooms are served by the well-appointed family bathroom.

The property further benefits from having lapsed approved planning permission (N/08/01191/FUL) for a single storey extension to both the front and rear of the property.

A WELL-PRESENTED, THREE BEDROOM VILLAGE COTTAGE, OFFERED WITH NO ONWARD CHAIN.



OUTSIDE

To the front of the property is gravelled off-street parking for three vehicles. A gate and path provides side access to the rear garden. The rear cottage style garden offers complete privacy and is a lovely tranquil space. It is mainly laid to lawn with an array of specimen shrub and flower borders giving interest throughout the seasons. A paved area which can be access from both the kitchen and dining room, provides an ideal seating area for enjoying the sunshine or for alfresco dining. A timber shed provides outside storage.

GUIDE PRICE: £375,000 (Subject to Contract)

VIEWING ARRANGEMENTS: By appointment with the Marlborough Office

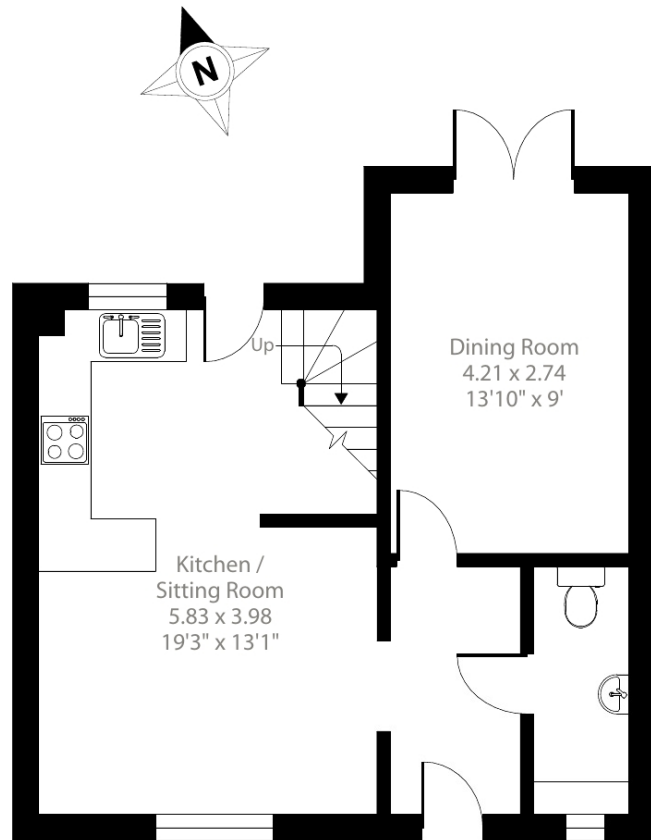


Classification L2 - Business Data

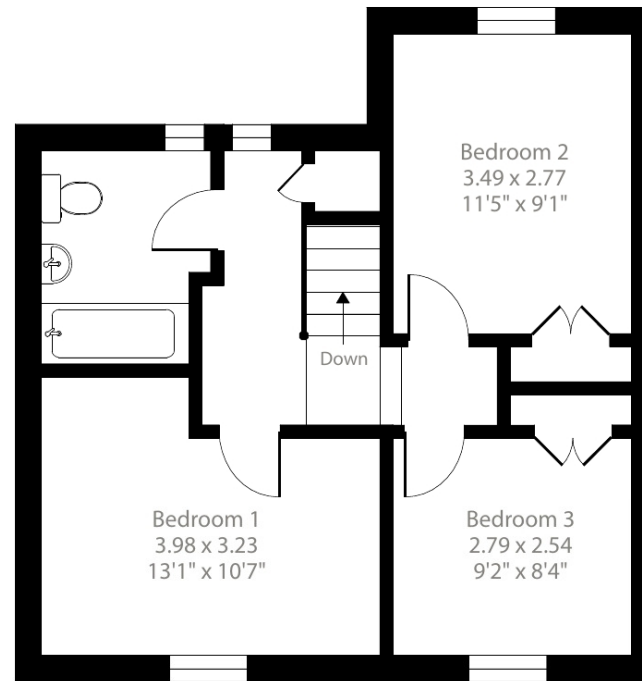
Yatesbury, Calne, SN11

Approximate Area = 958 sq ft / 89 sq m

For identification only - Not to scale



Ground Floor



First Floor



Floor plan produced in accordance with RICS Property Measurement 2nd Edition, Incorporating International Property Measurement Standards (IPMS2 Residential). © n/checon 2025. Produced for Carter Jonas. REF: 1340462

SERVICES AND MATERIAL INFORMATION

- Freehold
- Mains water, mains drainage, oil fired heating
- Council tax band: C
- Energy efficiency rating: D
- Council tax band: C
- Broadband and mobile coverage. Please refer to the Ofcom website

Marlborough 01672 514 916
93 High Street, Marlborough, SN8 1HD

carterjonas.co.uk
Offices throughout the UK

Exclusive UK affiliate of
CHRISTIE'S
INTERNATIONAL REAL ESTATE

IMPORTANT INFORMATION

These particulars are for general information purposes only and do not represent an offer or contract or part of one. Carter Jonas or anyone in their employment has made every attempt to ensure that the particulars and other information provided are as accurate as possible and they are not intended to amount to advice on which you should rely as being factually accurate. Full information which may be relevant to your decision regarding the property can be found on the property listing on carterjonas.co.uk or, (including off market properties) on the brochure or a separately available material information sheet. We would advise you to confirm the details of any material information prior to any offer being submitted. You should not assume that the property has all necessary planning, building regulations or other consents and Carter Jonas has not tested any services, facilities or equipment. Any measurements and distances given are approximate only. Where Carter Jonas has been provided with a floorplan by a third party, we cannot guarantee that the floorplan has been measured in accordance with IPMS. Purchasers must satisfy themselves of all of the aforementioned by independent inspection or otherwise. Our images only represent part of the property as it appeared at the time they were taken and do not represent the furnishings included; these are confirmed in a separate inventory. If you require further information, please contact us.

Classification L2 - Business Data