



NEW QUEBEC STREET, MARYLEBONE, W1H
£1,300 per week*

Carter Jonas

NEW QUEBEC STREET MARYLEBONE LONDON W1H 7RW

- Managed by The Portman Estate
- Two bedrooms with storage
- Two Bathrooms
- Open Plan Reception/Kitchen
- Wood Floors
- First Floor
- Unfurnished (or furnished at separate cost)

THE PROPERTY

Comprising of an open plan living room leading to a large fully fitted kitchen, two double bedrooms with lots of storage and two modern bathrooms.

Available for long term rental on an unfurnished basis, or furnished via separate negotiation.

The property is professionally managed by the Portman Estate.

Great location close to Bond Street, Marble Arch, Oxford Street and Hyde Park. New Quebec Street offers a fantastic range of shops and restaurants on your doorstep.

The Portman Estate's 110 acres of land within Marylebone, London W1, has a rich heritage dating back to the 16th century and is the setting for continual investment in premium residential properties, shops and independent businesses. The Portman Estate includes key places of architectural and historical interest along with a vibrant blend of shops, including Portman Village, restaurants, wine-bars, hotels and garden squares - a perfect mix of leisure opportunities for residents in the heart of London's West End.

Holding deposit is 1 weeks rent = £1,300 (at asking price).

Security deposit is 6 weeks rent = £7,800 (at asking price).

Council tax band G

For the latest information on broadband and mobile coverage, please visit /checker. Ofcom for the most up-to-date details

First floor, two bedroom apartment with wood floors throughout set within the Portman Estate.




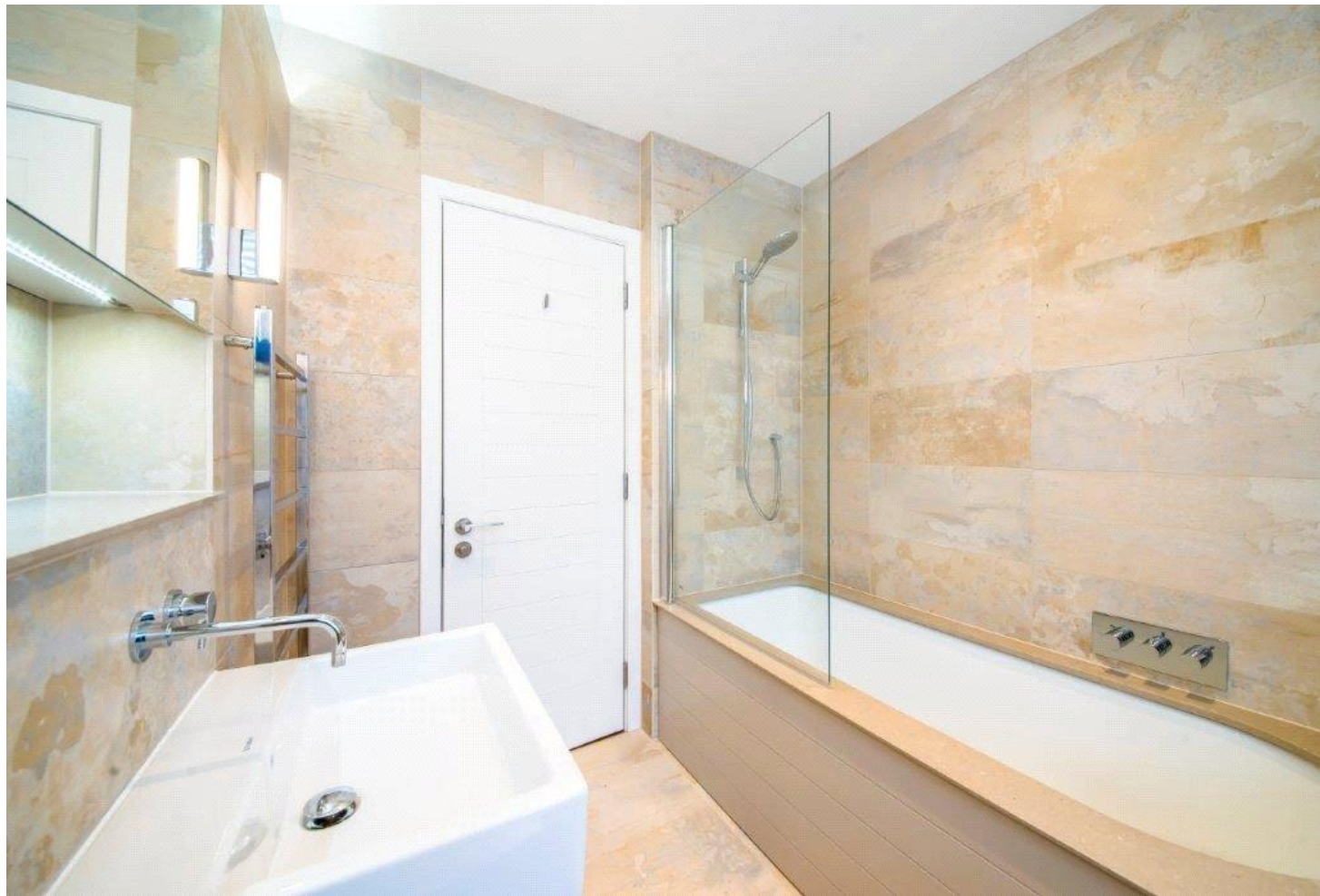
ADDITIONAL INFORMATION

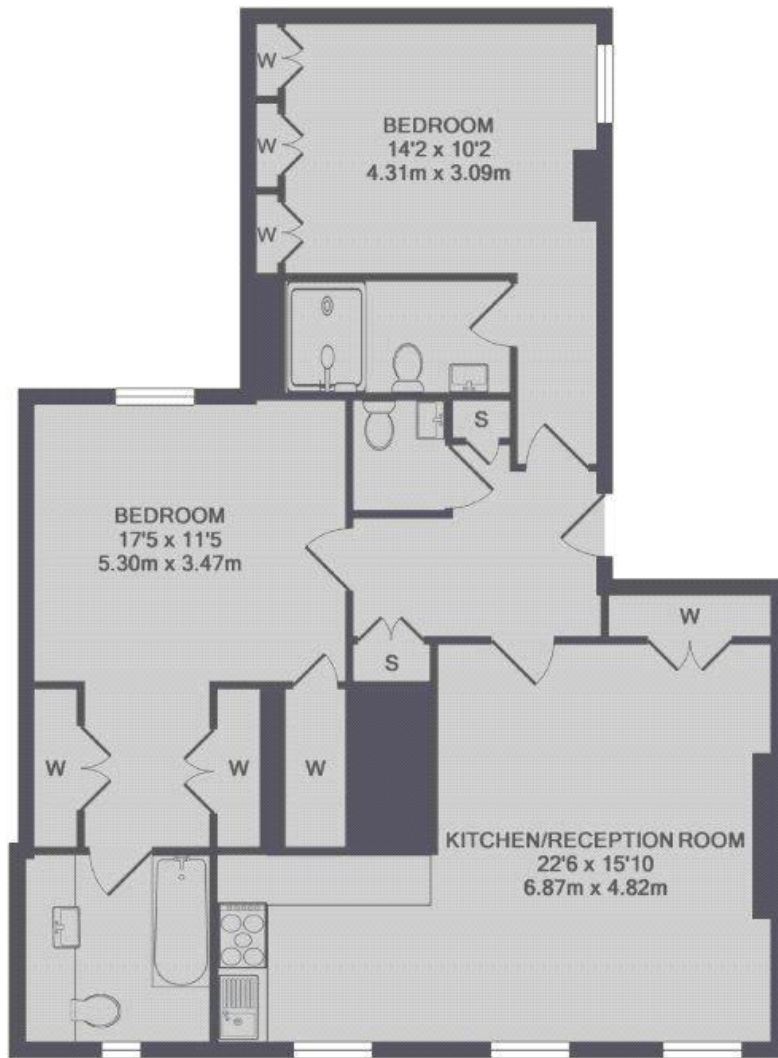
Offers Available for a minimum term of 12 months longer terms will be considered

Viewing Strictly by appointment

Local Authority City of Westminster - Selective Licences - Council Tax Band G

Energy Efficiency Rating		
	Current	Potential
Very energy efficient - lower running costs		
(92-) A		
(81-91) B		
(69-80) C	76	76
(55-68) D		
(39-54) E		
(21-38) F		
(1-20) G		
Not energy efficient - higher running costs		
England, Scotland & Wales	EU Directive 2002/91/EC	





TOTAL APPROX. FLOOR AREA 933 SQ.FT. (86.7 SQ.M.)

T: 020 7486 8866

37 New Cavendish Street, London, W1G 9TL

E: marylebone.lettings@carterjonas.co.uk

A member of



Exclusive UK affiliate of

CHRISTIE'S
INTERNATIONAL REAL ESTATE

Classification L2 - Business Data



IMPORTANT INFORMATION

These particulars are for general information purposes only and do not represent an offer or contract or part of one. Carter Jonas or anyone in their employment has made every attempt to ensure that the particulars and other information provided are as accurate as possible and they are not intended to amount to advice on which you should rely as being factually accurate. Full information which may be relevant to your decision regarding the property can be found on the property listing on carterjonas.co.uk or a separately available material information sheet, and we would advise you to confirm the details of any material information prior to any offer being submitted. You should not assume that the property has all necessary planning, building regulations or other consents and Carter Jonas has not tested any services, facilities, or equipment. Any measurements and distances given are approximate only. Where Carter Jonas has been provided with a floorplan by a third party, we cannot guarantee that the floorplan has been measured in accordance with IPMS. Purchasers or prospective tenants must satisfy themselves of all of the aforementioned by independent inspection or otherwise. Our images only represent part of the property as it appeared at the time they were taken and do not represent the furnishings included; these are confirmed in a separate inventory. If you require further information, please contact us. *Administration fees may apply depending on tenancy type. Please contact your local branch for this information.