



6 SOVEREIGN POINT, MIDLAND ROAD, BATH, BA2 3GJ

£1,650 per month*

Carter Jonas

6 SOVEREIGN POINT, MIDLAND ROAD, BATH, SOMERSET, BA2 3GJ

- Open plan kitchen/living room
- Bedroom
- Bathroom
- Balcony

THE PROPERTY

A luxury apartment fitted out to the highest standards in the landmark building Sovereign Point. There is an impressive entrance hallway and No. 6 is on the first floor and is approached via a lift or stairs. The front door opens into a spacious open plan living room, kitchen and dining area. The kitchen area includes ultra-modern integrated appliances, including a cooker, hob, fridge freezer, microwave, dishwasher and provides ample storage space. The spacious dining and living area make this the heart of the home. The living area features sliding doors opening onto a balcony.

This apartment boasts a large double bedroom with built in wardrobes and there is also a large bathroom with shower over bath and a utility cupboard with washing machine/dryer. A very smart city pad perfect for a professional couple or single. Offered unfurnished and available from early February 2026. Available for an initial 12 month tenancy.

EPC Rating B. Council Tax Band C (please see Bath & North East Somerset website for current cost)

Mains electric, and metered mains water.

Communal boilers run by EON (supplier cannot be changed).

No Parking available.

Internet & Mobile: Further information on availability and speeds can be found on the Ofcom website.

Holding deposit of one week's rent = £380.76 (deducted from first month's rent)

5 weeks' deposit = £1903.84

An impressive one bedroom apartment at Sovereign Point, Bath Riverside with balcony. Offered furnished.



ADDITIONAL INFORMATION

Offers	Available for a minimum term of 12 months longer terms will be considered
--------	---

Viewing	Strictly by appointment
---------	-------------------------

Local Authority	- Council Tax Band
-----------------	--------------------

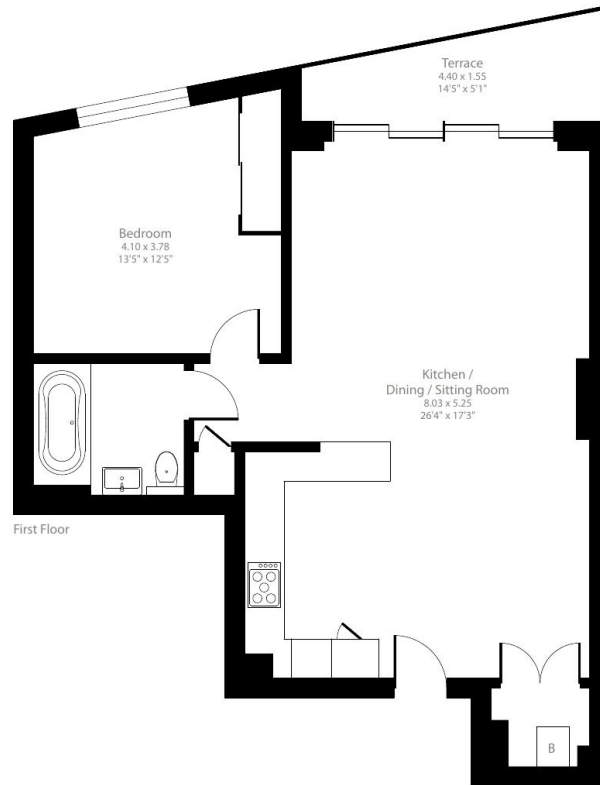
Directions	
------------	--



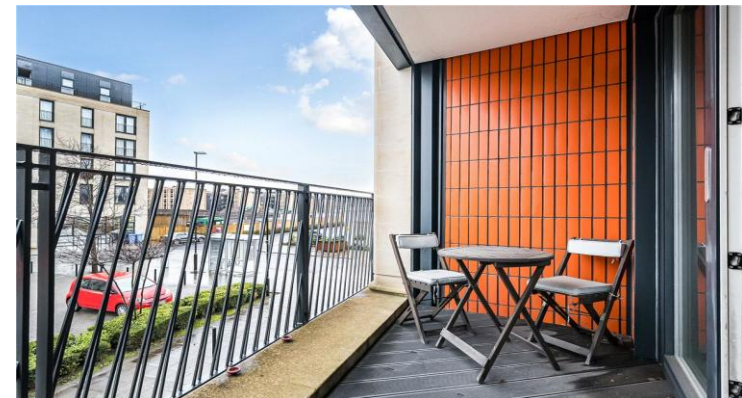
Sovereign Point, Midland Road, Bath, BA2

Approximate Area = 681 sq ft / 63.2 sq m

For identification only - Not to scale



Floor plan produced in accordance with RICS Property Measurement 2nd Edition, Incorporating International Property Measurement Standards (IPMS2 Residential). © nichecom 2026. Produced for Carter Jonas. REF: 1397543



IMPORTANT INFORMATION

These particulars are for general information purposes only and do not represent an offer or contract or part of one. Carter Jonas or anyone in their employment has made every attempt to ensure that the particulars and other information provided are as accurate as possible and they are not intended to amount to advice on which you should rely as being factually accurate. Full information which may be relevant to your decision regarding the property can be found on the property listing on carterjonas.co.uk or a separately available material information sheet, and we would advise you to confirm the details of any material information prior to any offer being submitted. You should not assume that the property has all necessary planning, building regulations or other consents and Carter Jonas has not tested any services, facilities, or equipment. Any measurements and distances given are approximate only. Where Carter Jonas has been provided with a floorplan by a third party, we cannot guarantee that the floorplan has been measured in accordance with IPMS. Purchasers or prospective tenants must satisfy themselves of all of the aforementioned by independent inspection or otherwise. Our images only represent part of the property as it appeared at the time they were taken and do not represent the furnishings included; these are confirmed in a separate inventory. If you require further information, please contact us. *Administration fees may apply depending on tenancy type. Please contact your local branch for this information.

T: 01225 747250

5-6 Wood Street, Bath, Somerset, BA1 2JQ

E: bath@carterjonas.co.uk

A member of



Exclusive UK affiliate of

CHRISTIE'S
INTERNATIONAL REAL ESTATE

Classification L2 - Business Data