



**GREAT CLARENDON STREET, OXFORD, OX2**

£2,400 per month\*

**Carter Jonas**

---

# GREAT CLARENDON STREET, OXFORD, OXFORDSHIRE, OX2 6AU

A recently renovated, light and modern terraced Victorian house situated in desirable Jericho.

- 2 bedrooms
- 1 bathroom
- 1 reception room
- modern kitchen
- refitted bathroom
- garden
- permit parking
- professionally managed
- flexible long term tenancy

## LOCATION

Jericho is a vibrant and lively place to live and highly desirable with its close proximity to the city centre.

## THE PROPERTY

Accommodation consists, entrance hall, living/dining room, modern kitchen with door leading to the garden, 2 bedrooms both with built-in wardrobes. Bathroom with a shower over the bath and good storage. Enclosed garden to the rear and the property is eligible for on-street parking permits.

Available mid May. Unfurnished.

Council tax band D - Please see Oxford City website for current charges.

EPC: D

Flood Risk: Very low

Holding deposit = 1 weeks rent £553

Deposit = 5 weeks rent = £2769

Mains gas, electricity, water and drainage.

Internet & Mobile: Further information on availability and speeds can be found at [checker.ofcom.org.uk](http://checker.ofcom.org.uk)



---

## ADDITIONAL INFORMATION

Offers Available for a minimum term of 12 months longer terms will be considered

---

Viewing Strictly by appointment

---

Local Authority Oxford City Council - Council Tax Band D

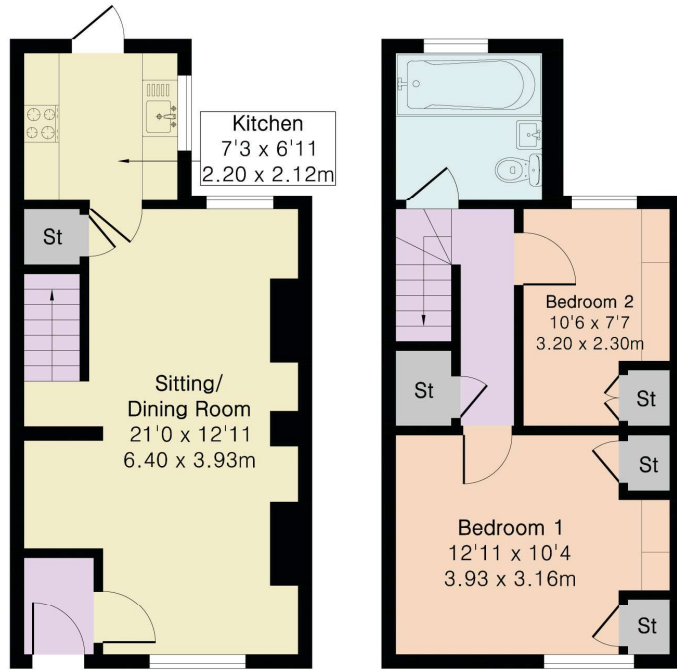
---



**Approximate Gross Internal Area 648 sq ft - 60 sq m**

Ground Floor Area 324 sq ft – 30 sq m

First Floor Area 324 sq ft – 30 sq m



Ground Floor

First Floor



Floor plan produced in accordance with RICS Property Measurement 2nd Edition. Although Pink Plan Ltd ensures the highest level of accuracy, measurements of doors, windows and rooms are approximate and no responsibility is taken for error, omission or misstatement. These plans are for representation purposes only and no guarantee is given on the total square footage of the property within this plan. The figure icon is for initial guidance only and should not be relied on as a basis of valuation.

**Carter Jonas**

**T: 01865 511444**

Mayfield House, 256 Banbury Road, Oxford, Oxfordshire, OX2 7DE

E: [oxford.lettings@carterjonas.co.uk](mailto:oxford.lettings@carterjonas.co.uk)

A member of



*Exclusive UK affiliate of*

**CHRISTIE'S**  
INTERNATIONAL REAL ESTATE

**IMPORTANT INFORMATION**

These particulars are for general information purposes only and do not represent an offer or contract or part of one. Carter Jonas or anyone in their employment has made every attempt to ensure that the particulars and other information provided are as accurate as possible and they are not intended to amount to advice on which you should rely as being factually accurate. Full information which may be relevant to your decision regarding the property can be found on the property listing on [carterjonas.co.uk](http://carterjonas.co.uk) or a separately available material information sheet, and we would advise you to confirm the details of any material information prior to any offer being submitted. You should not assume that the property has all necessary planning, building regulations or other consents and Carter Jonas has not tested any services, facilities, or equipment. Any measurements and distances given are approximate only. Where Carter Jonas has been provided with a floorplan by a third party, we cannot guarantee that the floorplan has been measured in accordance with IPMS. Purchasers or prospective tenants must satisfy themselves of all of the aforementioned by independent inspection or otherwise. Our images only represent part of the property as it appeared at the time they were taken and do not represent the furnishings included; these are confirmed in a separate inventory. If you require further information, please contact us. \*Administration fees may apply depending on tenancy type. Please contact your local branch for this information.