



DUCKS MEADOW,
MARLBOROUGH

Carter Jonas

12 DUCKS MEADOW, MARLBOROUGH, SN8 4DE

AMENITIES

- Three/ Four Bedrooms
- Reception
- Kitchen/ Breakfast room
- Garden
- No through Road
- Centre of Town Location
- Off-Road Parking
- Double Garage
- Roof Terrace with Views
- Solar Power

SITUATION

Ducks Meadow is situated within easy walking distance of the High Street. The town offers a mix of major retailers, independent boutiques, coffee and tea shops. There is a wide selection of national retailers including Waitrose and Tesco supermarkets, popular restaurants include: Franklyn's Bistro, Dan's, Pino's and Ask. Hillier's Yard and Hughenden Yard offer further boutique shopping to be discovered off the historic high street and the independent Parade Cinema show a wide range of films and live theatre. The leisure centre is located close to the centre of town and Marlborough Golf Club offers an excellent round of golf in a stunning setting. Marlborough has excellent schooling with St Johns Academy close by and is also home to the renowned private school Marlborough College. St. Mary's CE Primary School is located nearby and is Ofsted rated "Good". The surrounding area is dominated by the ancient Savernake Forest and stunning Marlborough Downs which run between the Pewsey Vale and Kennet Valley. Rail links to London Paddington are from Pewsey, Great Bedwyn, Swindon and Hungerford.

DESCRIPTION

12 Ducks Meadow occupies a superb, elevated position, just a short walk from the High Street and boasting fabulous views over the town and beyond. If there is the need for more space, the property offers scope for further improvement as planning permission (PL/2023/10550) has been approved for the formation of new 2-storey side extensions and pitched roof dormers to the front elevation.

The downstairs accommodation comprises of three double bedrooms, a newly installed family bathroom and very handy utility room, allowing the first-floor reception rooms to enjoy the fabulous views across Marlborough.

Heading upstairs, the expansive kitchen / dining room has a lovely, contemporary feel. The kitchen is fitted with a good range built-in units and integrated appliances including electric hob, oven, integral dishwasher and fridge-freezer. Double doors provide access onto the rear terrace.

A FABULOUS THREE/FOUR BEDROOM DETACHED HOUSE, CENTRALLY LOCATED WITHIN WALKING DISTANCE OF THE TOWN CENTRE WITH PARKING, TWO GARAGES AND ENJOYING GLORIOUS VIEWS.



The sitting room is a particularly good size, a spacious yet cosy room which enjoys a dual aspect. Sliding doors open onto the roof terrace, from where you can truly appreciate the far-reaching views over the town. Completing the top floor accommodation are bedroom 4 (or study) and a cloakroom at the end of the hallway.

There are solar panels at the property helping to provide a discount on electricity costs and if access to schools is what you're after, then both St Mary's Primary School and St John's Academy are a short walk away.

OUTSIDE

Steps up to the property from the lane bisect the lawned front garden and garages and there is off road-parking for two vehicles. The private rear garden is of a good size and is laid mainly to lawn. It enjoys great privacy and also boasts a small, secluded patio area to enjoy the morning sun. There is an excellent terrace for al fresco entertaining accessed off living room from where you can enjoy amazing views of Marlborough and the hills beyond.

GUIDE PRICE: "Offers over" £625,000 (Subject to Contract)

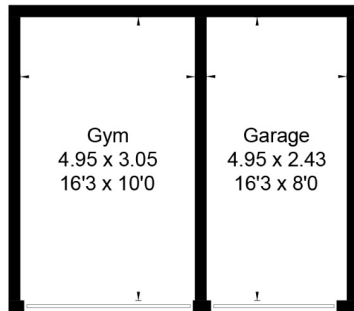
VIEWING ARRANGEMENTS: By appointment with the Marlborough Office

Classification L2 - Business Data



Classification L2 - Business Data

Ducks Meadow Marlborough, SN8
 Approximate Area = 1247 sq ft / 115.9 sq m
 Outbuildings = 303 sq ft / 28.2 sq m
 Total = 1550 sq ft / 144.1 sq m

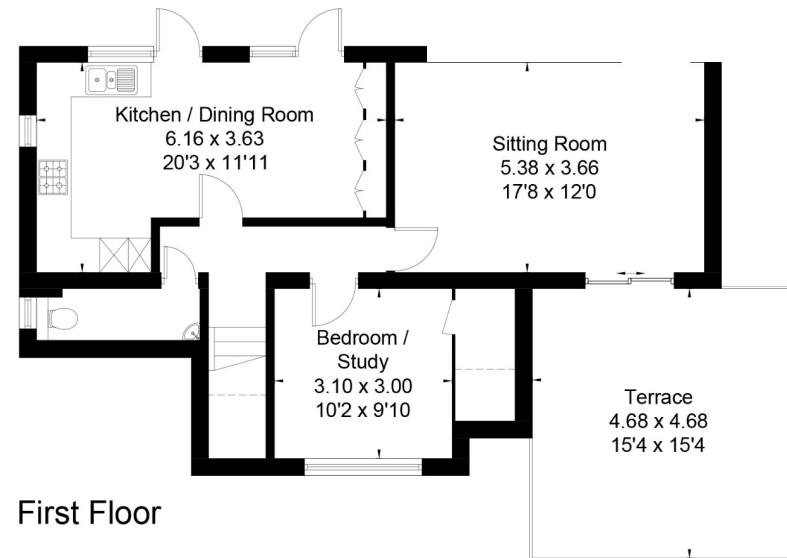


(Not Shown In Actual Location / Orientation)

= Reduced head height below 1.5m



Ground Floor



First Floor

SERVICES AND MATERIAL INFORMATION

- Freehold
- Mains water, mains drainage, gas fired central heating.
- Council tax band: F
- Energy efficiency rating: C
- Broadband and mobile coverage. Please refer to Ofcom website



This floor plan has been drawn in accordance with RICS Property Measurement 2nd edition.

All measurements, including the floor area, are approximate and for illustrative purposes only. @fourwalls-group.com #102005

Marlborough 01672 514 916
 93 High Street, Marlborough, SN8 1HD

carterjonas.co.uk
 Offices throughout the UK

Exclusive UK affiliate of
CHRISTIE'S
 INTERNATIONAL REAL ESTATE

IMPORTANT INFORMATION

These particulars are for general information purposes only and do not represent an offer or contract or part of one. Carter Jonas or anyone in their employment has made every attempt to ensure that the particulars and other information provided are as accurate as possible and they are not intended to amount to advice on which you should rely as being factually accurate. Full information which may be relevant to your decision regarding the property can be found on the property listing on carterjonas.co.uk or, (including off market properties) on the brochure or a separately available material information sheet. We would advise you to confirm the details of any material information prior to any offer being submitted. You should not assume that the property has all necessary planning, building regulations or other consents and Carter Jonas has not tested any services, facilities or equipment. Any measurements and distances given are approximate only. Where Carter Jonas has been provided with a floorplan by a third party, we cannot guarantee that the floorplan has been measured in accordance with IPMS. Purchasers must satisfy themselves of all of the aforementioned by independent inspection or otherwise. Our images only represent part of the property as it appeared at the time they were taken and do not represent the furnishings included; these are confirmed in a separate inventory. If you require further information, please contact us.

Classification L2 - Business Data