



LATITUDE HOUSE, OVAL ROAD, NW1

£1,025 per week\*

Carter Jonas

---

# LATITUDE HOUSE

## OVAL ROAD

### LONDON

### NW1 7EU

- Two generous double bedrooms
- Open-concept kitchen
- Fully Fitted Kitchen
- Ample natural light from large windows
- Fully furnished
- Situated on Oval Road

#### THE PROPERTY

Currently available for rent at Latitude House, this stunning and contemporary two-bedroom apartment boasts a vibrant reception room adorned with large windows that allow an abundance of natural light to flood the area. The open-concept kitchen provides ample space for dining.

This apartment includes two generously sized bedrooms with built-in wardrobes, a chic bathroom, and an outdoor space perfect for unwinding or entertaining.

Oval Road in Camden is a prime location combining the lively atmosphere of Camden with the tranquility of nearby Regent's Park and Regent's Canal. The area offers a vibrant mix of markets, restaurants, and cultural attractions, perfect for urban living. Excellent transport links are nearby, with Camden Town Station just 0.3 miles away and Mornington Crescent Station 0.5 miles away, both on the Northern Line, providing quick access to central London and beyond.

Holding deposit is 1 week's rent = £1,025 (at asking price)

Security deposit is 5 week's rent = £6,150 (at asking price £1,025pw)

Council Tax Band F

For the latest information on broadband and mobile coverage, please visit [/checker.ofcom](https://www.ofcom.gov.uk) for the most up-to-date details.


Beautiful apartment situated in the sought-after Latitude House, just a short distance from Camden and Regent's Park.

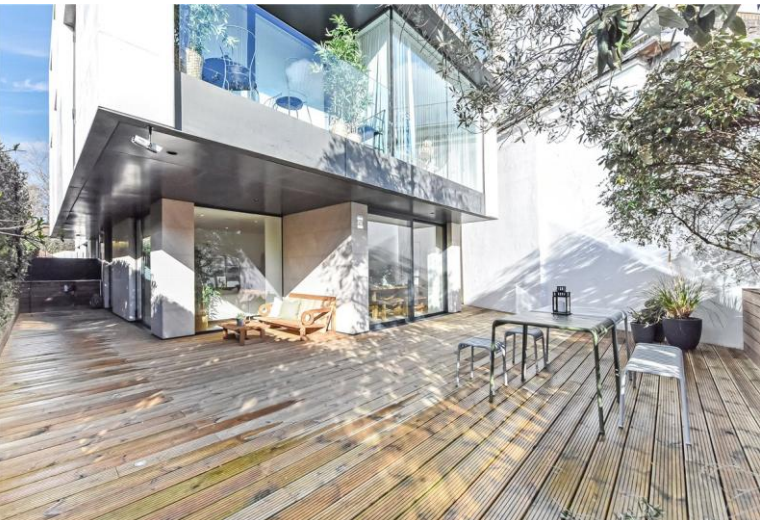


# ADDITIONAL INFORMATION

Viewing Strictly by appointment

Local Authority Camden Council - Council Tax Band F

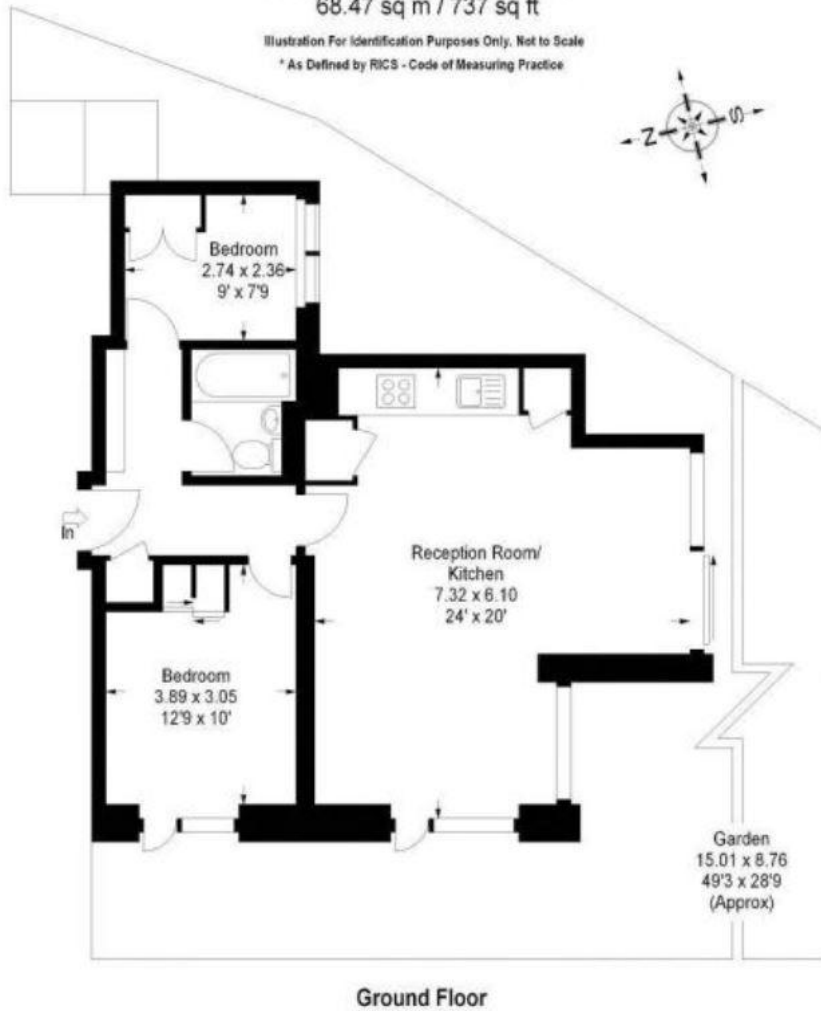
Energy Efficiency Rating		
	Current	Potential
Very energy efficient - lower running costs		
(92+) <b>A</b>		
(81-91) <b>B</b>		
(69-80) <b>C</b>	73	74
(55-68) <b>D</b>		
(39-54) <b>E</b>		
(21-38) <b>F</b>		
(1-20) <b>G</b>		
Not energy efficient - higher running costs		
England, Scotland & Wales	EU Directive 2002/91/EC	



## Latitude House, NW1

Approx. Gross Internal Area : -  
68.47 sq m / 737 sq ft

Illustration For Identification Purposes Only, Not to Scale  
\* As Defined by RICS - Code of Measuring Practice



T: 020 7486 8866

37 New Cavendish Street, London, W1G 9TL

E: marylebone.lettings@carterjonas.co.uk



Exclusive UK affiliate of

**CHRISTIE'S**  
INTERNATIONAL REAL ESTATE

Classification L2 - Business Data

### IMPORTANT INFORMATION

These particulars are for general information purposes only and do not represent an offer or contract or part of one. Carter Jonas or anyone in their employment has made every attempt to ensure that the particulars and other information provided are as accurate as possible and they are not intended to amount to advice on which you should rely as being factually accurate. Full information which may be relevant to your decision regarding the property can be found on the property listing on [carterjonas.co.uk](http://carterjonas.co.uk) or a separately available material information sheet, and we would advise you to confirm the details of any material information prior to any offer being submitted. You should not assume that the property has all necessary planning, building regulations or other consents and Carter Jonas has not tested any services, facilities, or equipment. Any measurements and distances given are approximate only. Where Carter Jonas has been provided with a floorplan by a third party, we cannot guarantee that the floorplan has been measured in accordance with IPMS. Purchasers or prospective tenants must satisfy themselves of all of the aforementioned by independent inspection or otherwise. Our images only represent part of the property as it appeared at the time they were taken and do not represent the furnishings included; these are confirmed in a separate inventory. If you require further information, please contact us. \*Administration fees may apply depending on tenancy type. Please contact your local branch for this information.