



**WESTCROFT SQUARE, LONDON, W6**

£3,500 per month\*

**Carter Jonas**

# LOWER MAISONETTE, WESTCROFT SQUARE, LONDON, W6 0TA

- Three double bedrooms
- Spacious reception room
- High ceilings
- Patio
- Newly refurbished
- EPC rating C

## LOCATION

The property is ideally situated on the borders of Hammersmith and Chiswick, close to fantastic shops, bars and restaurants as well as both Stamford Brook and Ravenscourt Park underground station (District Line), all within short walking distance. Westcroft Square is a beautiful garden square which can be accessed for free by the residents.

## THE PROPERTY

A beautifully refurbished three double bedroom maisonette arranged over the ground and lower ground floors, offering over 1,000 sq ft of well-proportioned accommodation.

Finished to a high standard throughout, the property benefits from a brand new kitchen and bathroom with underfloor heating in both, a private patio garden, and access to the sought-after Westcroft Square residents' gardens.

Holding deposit: 1 weeks rent

Security deposit: 5 weeks rent

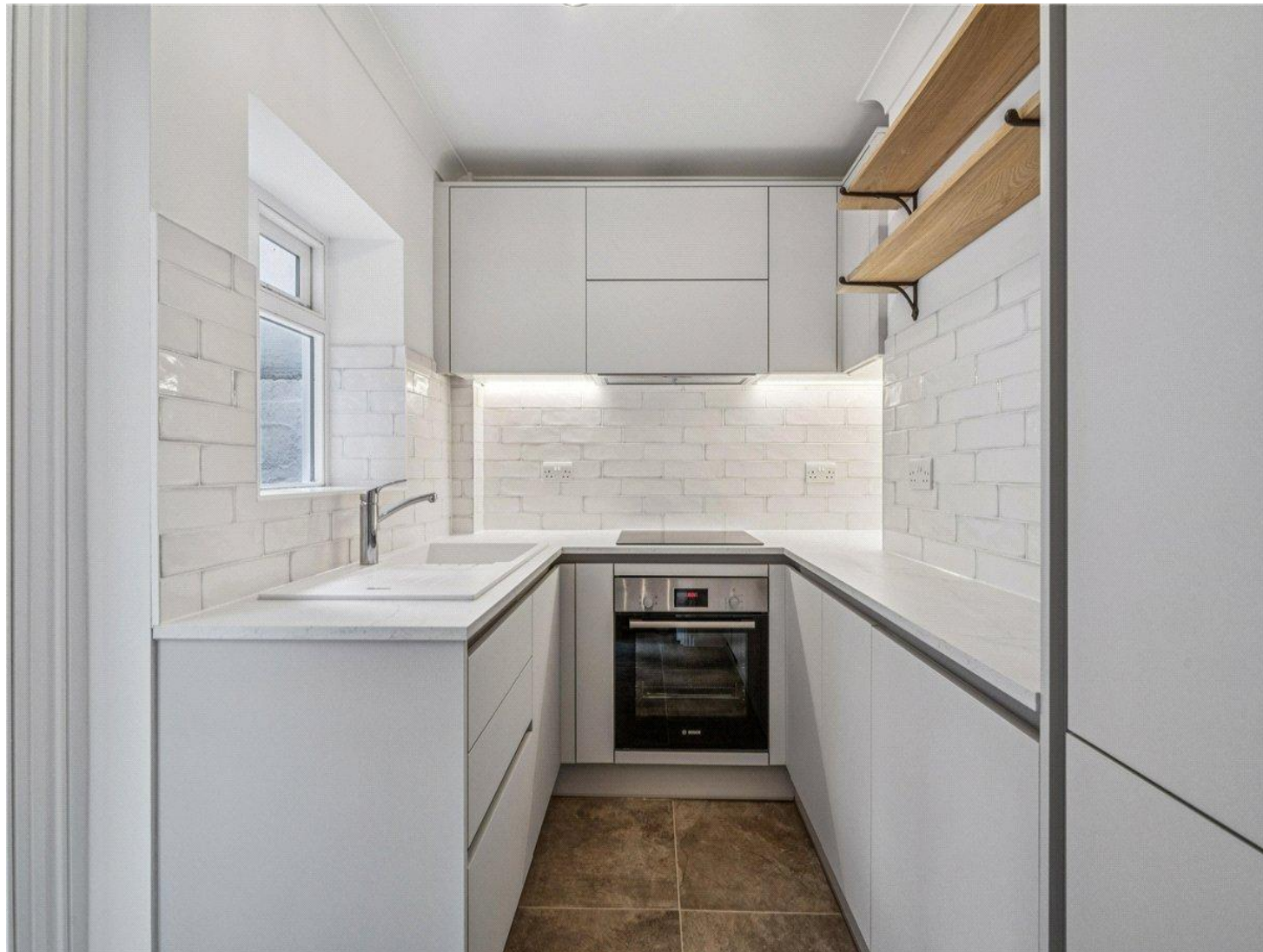
Council tax band E

No pets

Parking: On street via a permit

Families or maximum 3 sharers

Families or maximum 3 sharers. A spacious and newly refurbished three bedroom ground and lower ground floor apartment. EPC rating C



## OUTSIDE

Patio

---

## ADDITIONAL INFORMATION

---

Offers Available for a minimum term of 12 months longer terms will be considered

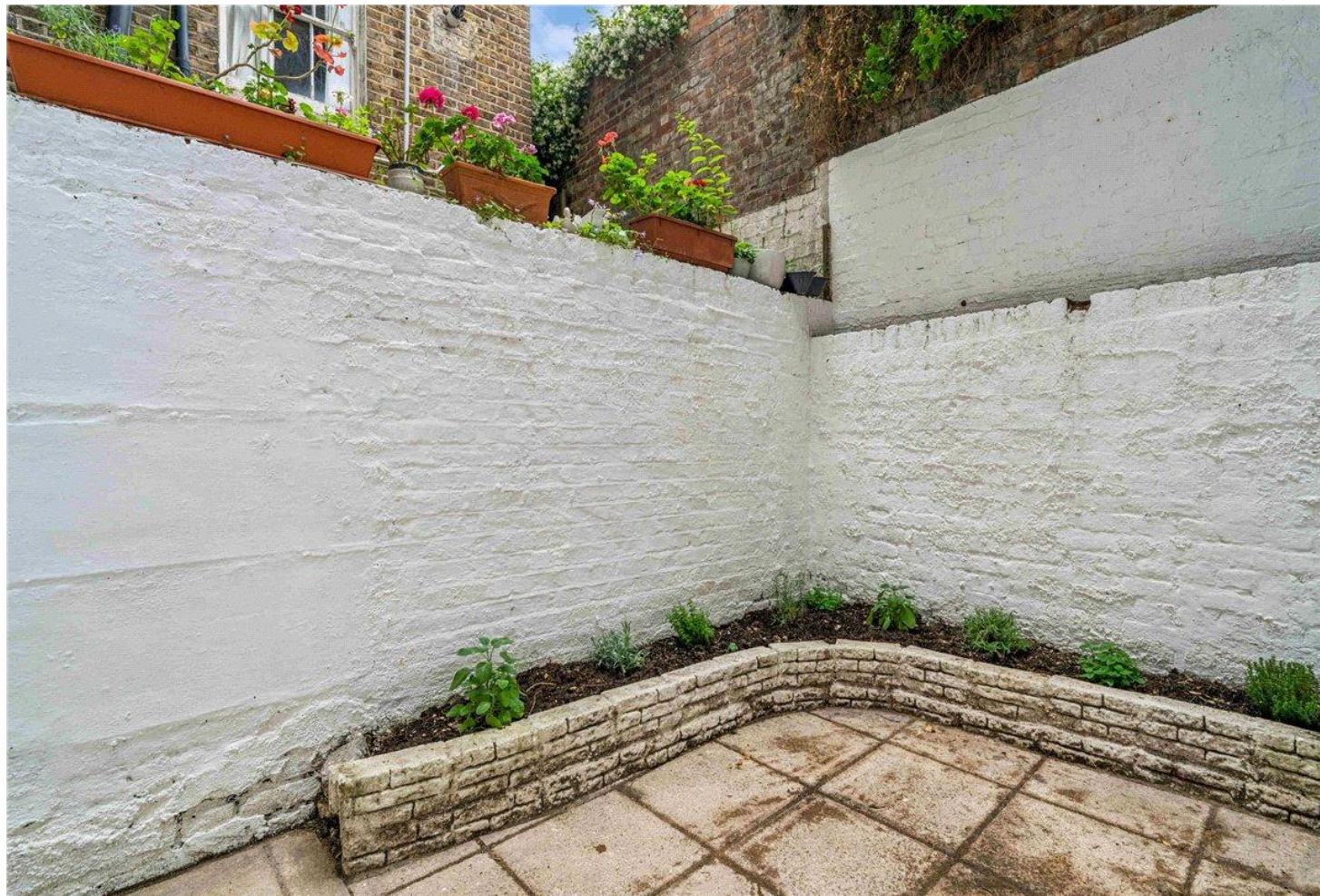
---

Viewing Strictly by appointment

---

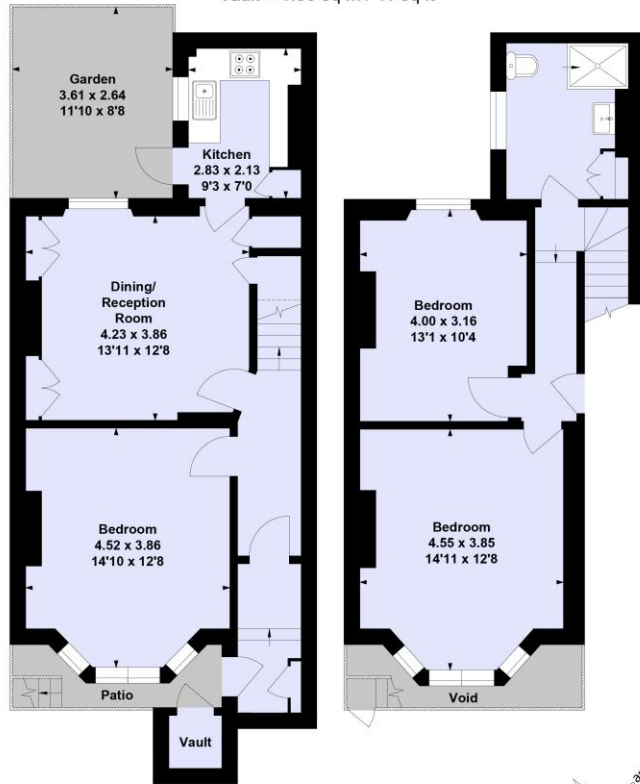
Local Authority Hammersmith and Fulham - Council Tax Band E

---



## Lower Maisonette, Westcroft Square, W6

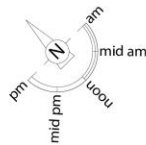
Approximate Floor Area = 93.96 sq m / 1011 sq ft  
(Including Vault)  
Vault = 1.00 sq m / 11 sq ft



This floor plan has been prepared in accordance with the RICS Property Measurement Standards. All measurements are approximate and for illustrative purposes only.

**Carter Jonas**

Exclusive UK affiliate of  
**CHRISTIE'S**  
INTERNATIONAL REAL ESTATE



Score	Energy rating	Current	Potential
92+	A		
81-91	B		
69-80	C		
55-68	D	69 C	78 C
39-54	E		
21-38	F		
1-20	G		



**T: 020 7751 8898**  
361 Fulham Palace Road, London, SW6 6TA  
E: fulhamlettings2@carterjonas.co.uk



Exclusive UK affiliate of

**CHRISTIE'S**  
INTERNATIONAL REAL ESTATE

Classification L2 - Business Data

### IMPORTANT INFORMATION

These particulars are for general information purposes only and do not represent an offer or contract or part of one. Carter Jonas or anyone in their employment has made every attempt to ensure that the particulars and other information provided are as accurate as possible and they are not intended to amount to advice on which you should rely as being factually accurate. Full information which may be relevant to your decision regarding the property can be found on the property listing on [carterjonas.co.uk](http://carterjonas.co.uk) or a separately available material information sheet, and we would advise you to confirm the details of any material information prior to any offer being submitted. You should not assume that the property has all necessary planning, building regulations or other consents and Carter Jonas has not tested any services, facilities, or equipment. Any measurements and distances given are approximate only. Where Carter Jonas has been provided with a floorplan by a third party, we cannot guarantee that the floorplan has been measured in accordance with IPMS. Purchasers or prospective tenants must satisfy themselves of all of the aforementioned by independent inspection or otherwise. Our images only represent part of the property as it appeared at the time they were taken and do not represent the furnishings included; these are confirmed in a separate inventory. If you require further information, please contact us. \*Administration fees may apply depending on tenancy type. Please contact your local branch for this information.