



18 HOPE PLACE, LANSDOWN ROAD, BATH, BA1 5DL
£3,500 per month*

Carter Jonas

- Open-plan Kitchen/Living Room
- Two Bedrooms
- Two Bathrooms
- Separate WC
- Allocated off street parking space
- Wonderful City views

A luxurious and immaculate two bedroom, two bathroom apartment in an elevated position on the lower Lansdown slopes with allocated off street parking space.

THE PROPERTY

We are pleased to offer to the rentals market, a most immaculate apartment in Hope Place, a prominent Bath building set in an elevated position on the lower slopes of Lansdown. Nestled within the Bath Conservation Area in leafy Lansdown, this prestigious development has been luxuriously built and benefits from wonderful southerly views across the City of Bath. The apartment consists of open-plan kitchen/living room, with windows facing south, taking advantage of the most wonderful views. There are 2 bedrooms, one of which has an en suite shower room, a separate bathroom and an additional W.C. This beautiful apartment can be offered either furnished or unfurnished and comes with the huge benefit of an off street car parking space. There is also EV charging available.

EPC Rating B. Council Tax Band F (please see Bath & North East Somerset website for current cost)

Mains electric, gas and metered mains water.

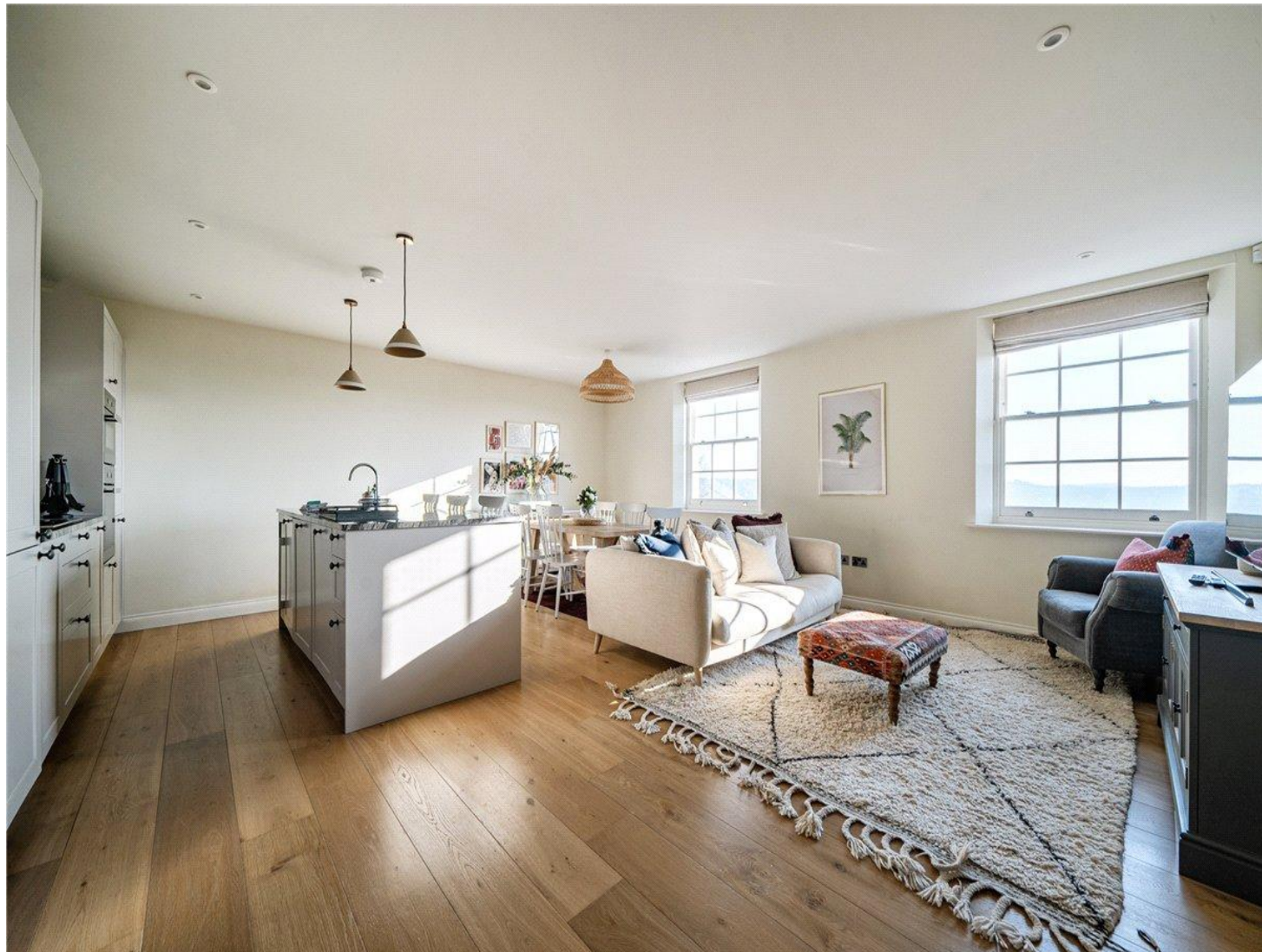
Parking: Allocated Off-street parking space to the front of the property.

Internet & Mobile: Further information on availability and speeds can be found on the Ofcom website.

At a rent of £3,500 per calendar month:

Holding deposit of 1 week's rent £807.69 (deducted from first month's rent)

Security deposit of 5 weeks rent £4,038.46



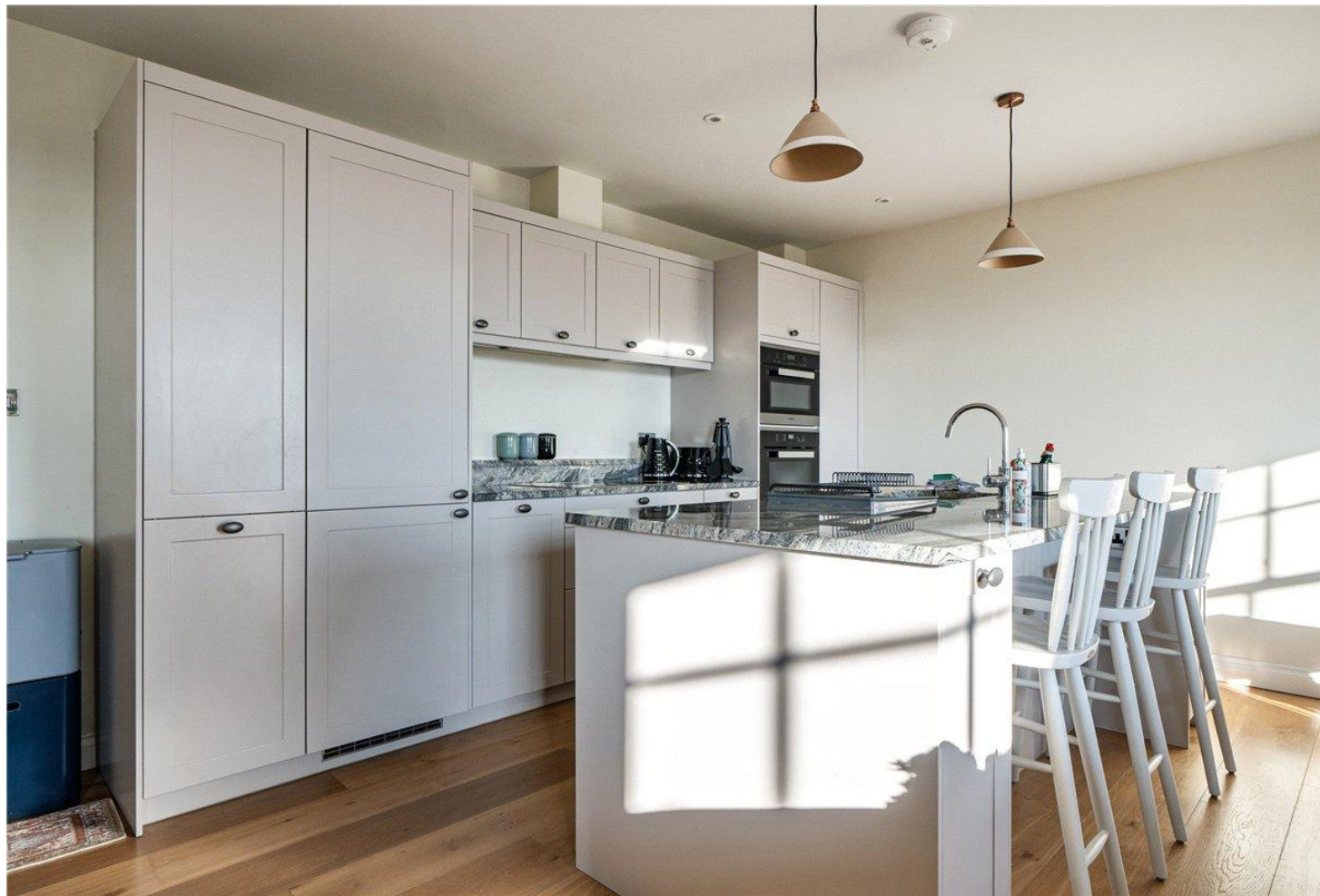
ADDITIONAL INFORMATION

Offers Available for a minimum term of 12 months longer terms will be considered

Viewing Strictly by appointment

Local Authority - Council Tax Band

Directions



Lansdown Road, Bath, BA1

Approximate Area = 985 sq ft / 91.5 sq m

For identification only - Not to scale



Second Floor

Floor plan produced in accordance with RICS Property Measurement 2nd Edition, Incorporating International Property Measurement Standards (IPMS2 Residential). © nchecon 2026. Produced for Carter Jonas. REF: 1433095

Score	Energy rating	Current	Potential
92+	A		
81-91	B	86 B	86 B
69-80	C		
55-68	D		
39-54	E		
21-38	F		
1-20	G		

T: 01225 747250

5-6 Wood Street, Bath, Somerset, BA1 2JQ

E: bath.enquiries@carterjonas.co.uk



Exclusive UK affiliate of

CHRISTIE'S
INTERNATIONAL REAL ESTATE

Classification L2 - Business Data

IMPORTANT INFORMATION

These particulars are for general information purposes only and do not represent an offer or contract or part of one. Carter Jonas or anyone in their employment has made every attempt to ensure that the particulars and other information provided are as accurate as possible and they are not intended to amount to advice on which you should rely as being factually accurate. Full information which may be relevant to your decision regarding the property can be found on the property listing on carterjonas.co.uk or a separately available material information sheet, and we would advise you to confirm the details of any material information prior to any offer being submitted. You should not assume that the property has all necessary planning, building regulations or other consents and Carter Jonas has not tested any services, facilities, or equipment. Any measurements and distances given are approximate only. Where Carter Jonas has been provided with a floorplan by a third party, we cannot guarantee that the floorplan has been measured in accordance with IPMS. Purchasers or prospective tenants must satisfy themselves of all of the aforementioned by independent inspection or otherwise. Our images only represent part of the property as it appeared at the time they were taken and do not represent the furnishings included; these are confirmed in a separate inventory. If you require further information, please contact us. *Administration fees may apply depending on tenancy type. Please contact your local branch for this information.