



ST MARTINS,  
MARLBOROUGH

Carter Jonas



# 17 ST MARTINS, MARLBOROUGH, SN8 1AR

## AMENITIES

- Grade II Listed
- Town location
- Period features
- Planning approved to extend
- Sitting room
- Kitchen
- Two bedrooms
- Garden

## SITUATION

17 St Martins is a period cottage, Grade II listed and within very easy distance of Marlborough High Street. Marlborough is a vibrant market town offering a mix of major retailers, independent boutiques, coffee and tea shops. National retailers include Waitrose and Tesco supermarkets, and the wide range of restaurants includes Dan's, Pino's, Rick Stein's, Franklyn's Bistro and Ask. There are further shopping areas in Hillier's Yard and Hughenden Yard, as well as a newly opened cinema at The Parade. The leisure centre and golf club provide excellent sporting facilities and there are thriving tennis, cricket, running and rugby clubs in town. Although self-sufficient, the town is well placed for other towns including Swindon, Bath, Hungerford and Newbury, and is surrounded by the attractive countryside of the Marlborough Downs, Pewsey Vale and Kennet Valley. Intercity (Paddington) rail and M4 connections are at both Pewsey, Great Bedwyn, Swindon and Hungerford.

## DESCRIPTION

17 St Martins, is a two-bedroom Grade II Listed cottage located close to the town centre of Marlborough. Full of period charm and features, including exposed timbers, an open fireplace in the sitting room and wooden flooring to the second bedroom, the cottage has been lovingly renovated by the current owner to bring the property back to its former glory.

The generously proportioned sitting room has an open fireplace with wood burning stove and has ample space for a dining table. The sitting room leads through to the kitchen, rear porch and downstairs bathroom. Upstairs are two good sized double bedrooms, again which are full of period charm.

The cottage has approved planning permission (PL/2023/04497) to extend the kitchen to create a larger kitchen/breakfast room and to also create and ensuite upstairs.

**A GRADE II LISTED PERIOD COTTAGE, FULL OF CHARM, CLOSE TO THE GREEN AND MARLBOROUGH HIGH STREET.**



## OUTSIDE

The cottage has its own private garden which has been landscaped by a professional gardener and is mainly laid to lawn and enclosed by close board fencing. There is also a brick built freestanding store.

**GUIDE PRICE:** £325,000 (Subject to Contract)

**VIEWING ARRANGEMENTS:** By appointment with the Marlborough Office





Classification L2 - Business Data



## 17 St. Martins

Approximate Gross Internal Area = 64.5 sq m / 694 sq ft

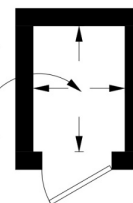
Store = 1.5 sq m / 16 sq ft

Total = 66.0 sq m / 710 sq ft

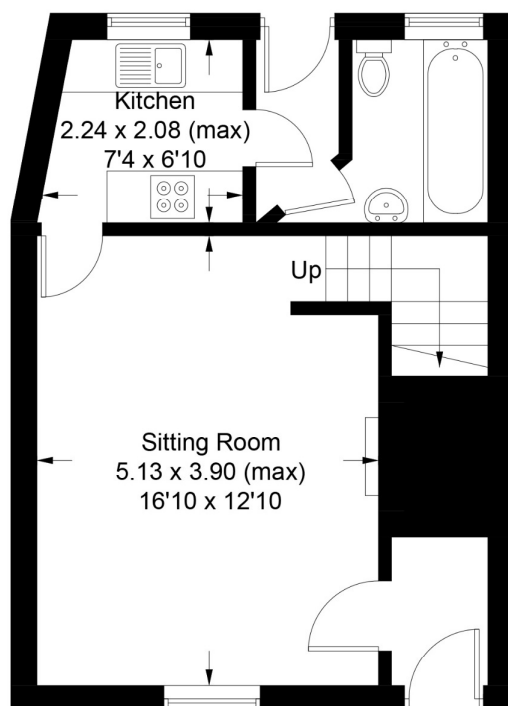


= Reduced headroom below 1.5m / 5'0

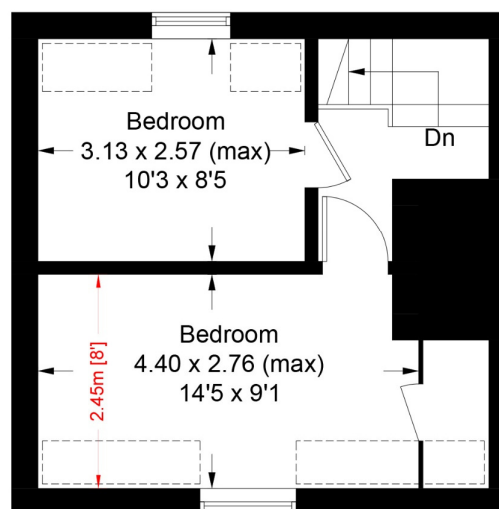
Store  
1.45 x 1.04 (max)  
4'9 x 3'5



(Not Shown In Actual  
Location / Orientation)



Ground Floor



First Floor

Illustration for identification purposes only,  
measurements are approximate, not to scale. (ID840025)

### SERVICES AND MATERIAL INFORMATION

- Freehold
- Grade II Listed
- Mains water, mains drainage. Gas fired central heating.
- Council tax band: C
- Energy efficiency rating: E
- Broadband and mobile coverage. Please refer to Ofcom website

**Marlborough 01672 514 916**  
93 High Street, Marlborough, SN8 1HD

**carterjonas.co.uk**  
Offices throughout the UK

*Exclusive UK affiliate of*  
**CHRISTIE'S**  
INTERNATIONAL REAL ESTATE

### IMPORTANT INFORMATION

*These particulars are for general information purposes only and do not represent an offer or contract or part of one. Carter Jonas or anyone in their employment has made every attempt to ensure that the particulars and other information provided are as accurate as possible and they are not intended to amount to advice on which you should rely as being factually accurate. Full information which may be relevant to your decision regarding the property can be found on the property listing on [carterjonas.co.uk](http://carterjonas.co.uk) or, (including off market properties) on the brochure or a separately available material information sheet. We would advise you to confirm the details of any material information prior to any offer being submitted. You should not assume that the property has all necessary planning, building regulations or other consents and Carter Jonas has not tested any services, facilities or equipment. Any measurements and distances given are approximate only. Where Carter Jonas has been provided with a floorplan by a third party, we cannot guarantee that the floorplan has been measured in accordance with IPMS. Purchasers must satisfy themselves of all of the aforementioned by independent inspection or otherwise. Our images only represent part of the property as it appeared at the time they were taken and do not represent the furnishings included; these are confirmed in a separate inventory. If you require further information, please contact us.*

Classification L2 - Business Data