



BROOKS MEWS, MAYFAIR, W1K
£3,000.00 per month*

Carter Jonas

BROOKS MEWS, MAYFAIR, LONDON, W1K

- Beautifully second-floor apartment
- Elegant period building in the heart of Mayfair
- Moments from Grosvenor Square
- Short walk to Bond Street Underground Station (Elizabeth, Central & Jubilee lines)
- Bright, freshly redecorated interiors throughout
- Surrounded by world-class restaurants, luxury shopping and five-star hotels
- Excellent transport links

THE PROPERTY

Set on the second floor of a charming period building, this beautifully redecorated apartment offers stylish living in one of London's most exclusive neighbourhoods.

Finished with fresh, contemporary interiors throughout, the apartment provides bright and well-presented accommodation, perfectly suited to professionals seeking a prestigious Mayfair address. The property's period character is complemented by its modern finish, creating an inviting home in an exceptional central London location.

Situated just moments from the beautiful gardens of Grosvenor Square, residents are perfectly placed to enjoy the very best of Mayfair. From internationally acclaimed restaurants and luxury boutiques to private members' clubs, five-star hotels and world-class galleries, everything this iconic neighbourhood has to offer is on your doorstep.

Excellent transport connections are within easy reach, with Bond Street Underground Station providing access to the Elizabeth, Central and Jubilee lines, making travel across London and beyond effortless.

APT

The deposit will be £3,461.55 at a rental value of £692.31 (asking price)

Holding deposit = 1 weeks rent of £692.31

Deposit is 5 weeks rent (£692.31pw = £3,461.55 deposit)

A beautifully refurbished second-floor apartment set within an elegant period building in the heart of Mayfair. Ideally positioned moments from Grosvenor Square, Bond Street and the world-renowned shopping, dining and lifestyle amenities.



ADDITIONAL INFORMATION

Viewing Strictly by appointment

Local Authority Westminster City Council - Council Tax Band E

* CGI furniture in Images
Council Tax Band E
Heating & Hot Water: Gas

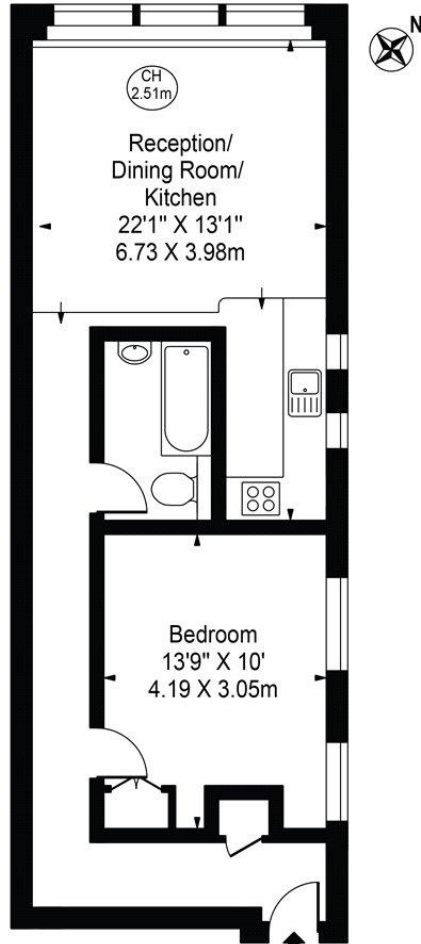
For the latest information on broadband and mobile coverage, please visit the Ofcom website <https://checker.ofcom.org.uk/en-gb/broadband-coverage>.

Energy Efficiency Rating		Current	Potential
Very energy efficient - lower running costs			
(92+)	A		
(81-91)	B		
(69-80)	C		
(55-68)	D	63	74
(39-54)	E		
(21-38)	F		
(1-20)	G		
Not energy efficient - higher running costs			
England, Scotland & Wales		EU Directive 2002/91/EC	



Brooks Mews

Approx. Gross Internal Area 519 Sq Ft - 48.18 Sq M



Second Floor
For Illustration Purposes Only - Not To Scale

This floor plan should be used as a general outline for guidance only and does not constitute in whole or in part an offer or contract. Any intending purchaser or lessee should satisfy themselves by inspection, searches, enquiries and full survey as to the correctness of each statement. Any areas, measurements or distances quoted are approximate and should not be used to value a property or be the basis of any sale or let.
Copyright Morriarti Photography & Design LTD



T: 020 7493 0676

18 Davies Street, Mayfair, London, W1K 3DS

E: mayfair.lettings@carterjonas.co.uk



Exclusive UK affiliate of

CHRISTIE'S
INTERNATIONAL REAL ESTATE

Classification L2 - Business Data

IMPORTANT INFORMATION

These particulars are for general information purposes only and do not represent an offer or contract or part of one. Carter Jonas or anyone in their employment has made every attempt to ensure that the particulars and other information provided are as accurate as possible and they are not intended to amount to advice on which you should rely as being factually accurate. Full information which may be relevant to your decision regarding the property can be found on the property listing on carterjonas.co.uk or a separately available material information sheet, and we would advise you to confirm the details of any material information prior to any offer being submitted. You should not assume that the property has all necessary planning, building regulations or other consents and Carter Jonas has not tested any services, facilities, or equipment. Any measurements and distances given are approximate only. Where Carter Jonas has been provided with a floorplan by a third party, we cannot guarantee that the floorplan has been measured in accordance with IPMS. Purchasers or prospective tenants must satisfy themselves of all of the aforementioned by independent inspection or otherwise. Our images only represent part of the property as it appeared at the time they were taken and do not represent the furnishings included; these are confirmed in a separate inventory. If you require further information, please contact us. *Administration fees may apply depending on tenancy type. Please contact your local branch for this information.