



**ENNISMORE GARDENS, LONDON, SW7**  
£825,000

**Carter Jonas**



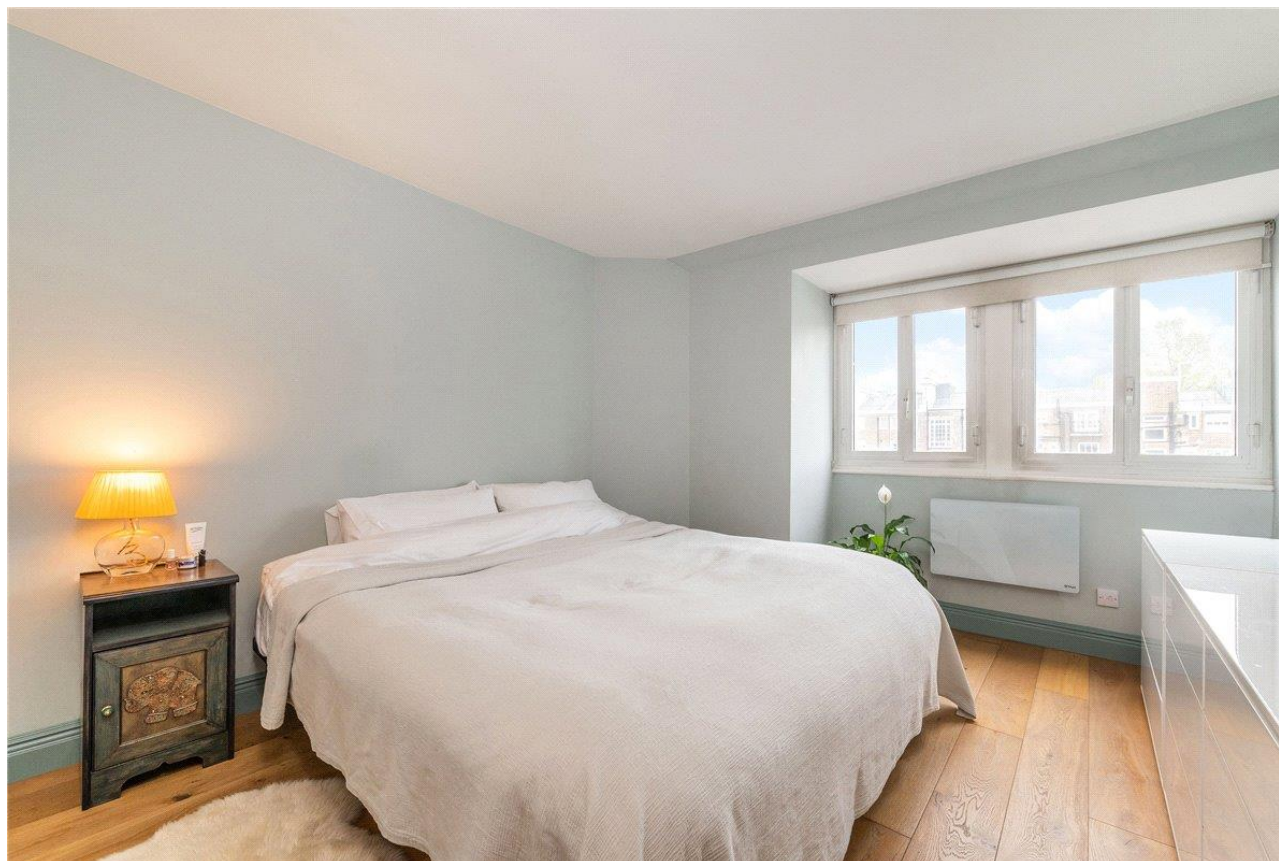
# ENNISMORE GARDENS, LONDON. SW7

The apartment benefits from an open plan kitchen reception room, 2 bedrooms, separate bathroom and access to communal gardens.

The property is within walking distance of Hyde Park, Harrods and the underground station in South Kensington.

This is a great opportunity to purchase an apartment within one of London most prestigious central addresses.

**A BEAUTIFULLY TWO BEDROOM APARTMENT LOCATED ON THE TOP FLOOR BY ONE OF KNIGHTSBRIDGE'S MOST HIGHLY SOUGHT AFTER GARDEN SQUARES.**



**TENURE:** Leasehold - Expires 16/11/2172

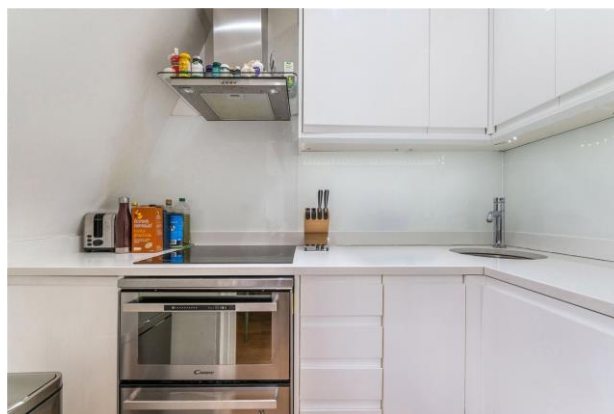
**LOCAL AUTHORITY:** The Royal Borough of Kensington & Chelsea

**EPC BAND:** G

**Council Tax Band:** G

**Ground Rent:** Peppercorn

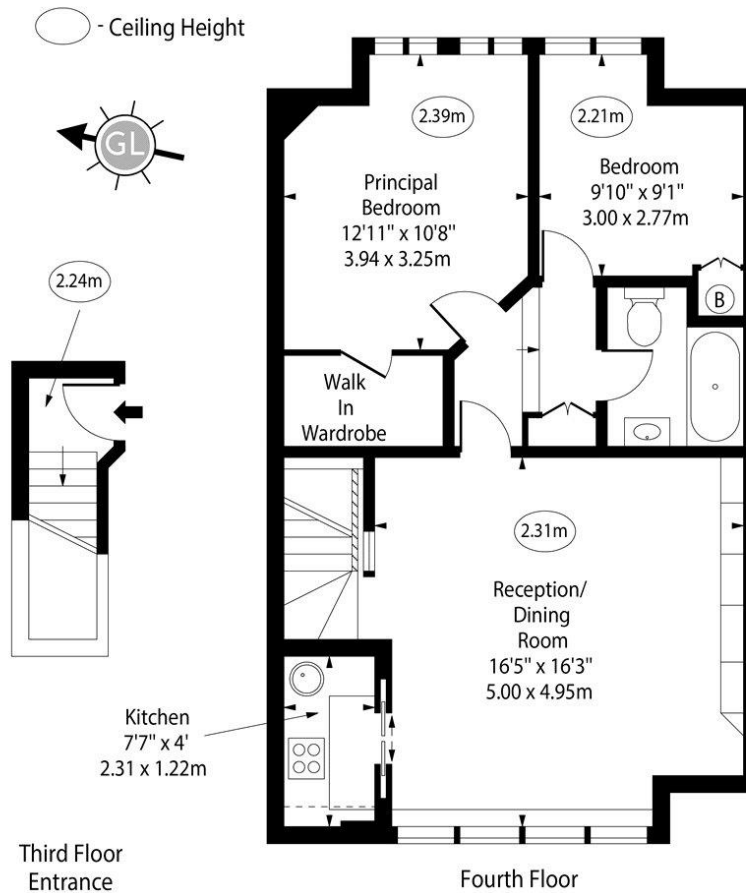
**Service Charge:** Approximately £2,300 per annum







## Ennismore Gardens, SW7



Approx Gross Internal Area 685 Sq Ft - 63.64 Sq M

For Illustration Purposes Only - Not To Scale  
www.goldlens.co.uk  
Ref. No. 020643M

Mayfair 020 7493 0676

mayfair@carterjonas.co.uk  
18 Davies Street, Mayfair, London, W1K 3DS

carterjonas.co.uk  
Offices throughout the UK

Exclusive UK affiliate of

**CHRISTIE'S**  
INTERNATIONAL REAL ESTATE

### IMPORTANT INFORMATION

These particulars are for general information purposes only and do not represent an offer of contract or part of one. Carter Jonas has made every attempt to ensure that the particulars and other information provided are as accurate as possible and are not intended to amount to advice on which you should rely as being factually accurate. You should not assume that the property has all necessary planning, building regulations or other consents and Carter Jonas have not tested any services, facilities or equipment. Any measurements and distances given are approximate only. Purchasers must satisfy themselves of all of the aforementioned by independent inspection or otherwise. Although we make reasonable efforts to update our information, neither Carter Jonas LLP nor anyone in its employment or acting on its behalf makes any representations warranties or guarantees, whether express or implied, in relation to the property, or that the content in these particulars is accurate, complete or up to date. Our images only represent part of the property as it appeared at the time they were taken. If you require further information please contact us.

Classification L2 - Business Data