



7 CHARLOTTE STREET, BATH, BA1
£3,500 per month*

Carter Jonas

Wonderful Georgian Townhouse in Bath City Centre situated just off Queen Square with the benefit of a garden and an off street parking space.

- 4 Bedrooms
- sitting room
- dining room
- kitchen
- 2 bathrooms
- garden
- parking space

THE PROPERTY

Wonderful central Georgian townhouse situated just off Queen Square offering smart family accommodation for those desiring City Centre living. The entrance hallway has wood flooring and leads through to Living Room with double doors through to dining room. The hallway leads through to the Kitchen at the rear which has all appliances and glass doors out onto a terrace and small rear garden. There is a utility room on the mezzanine level with washing machine and tumble dryer. On the first floor is the master bedroom suite with large bathroom with separate shower and two double bedrooms on the second floor and a family bathroom and double bedroom on the third floor. To the rear is a terrace, garden and parking for two cars. An immaculate city home. REGRET NO STUDENTS OR SHARERS.

Available for an initial 12 month tenancy.

EPC Rating D. Council Tax Band C (please see Bath & North East Somerset website for current cost)

Mains electric, gas and mains water.

Parking: Two off street parking spaces to the rear.

Internet & Mobile: Further information on availability and speeds can be found on the Ofcom website.



At a rent of £3500 per calendar month: Holding deposit of 1 week's rent £807.69

5 weeks' deposit - £4038.45

ADDITIONAL INFORMATION

Offers	Available for a minimum term of 12 months longer terms will be considered
Viewing	Strictly by appointment
Local Authority	- Council Tax Band C
Directions	





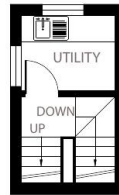
Charlotte Street, Bath, BA1

Approximate Area = 2408 sq ft / 224 sq m (includes garage)

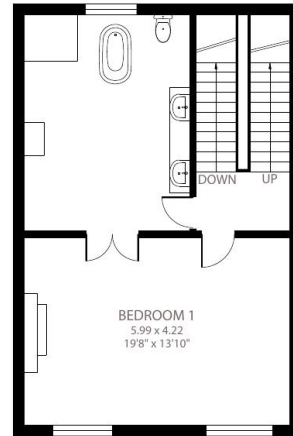
For identification only - Not to scale



GROUND FLOOR



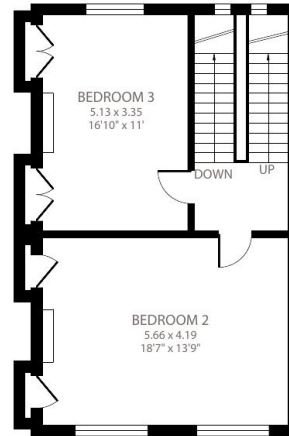
FIRST FLOOR



SECOND FLOOR



FOURTH FLOOR

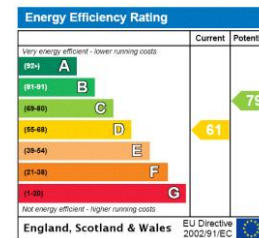


THIRD FLOOR



Certified
Property
Measurer

Floor plan produced in accordance with RICS Property Measurement Standards incorporating International Property Measurement Standards (IPMS2 Residential). © nlcocom 2022. Produced for Carter Jonas. REF: 892070



T: 01225 747250

5-6 Wood Street, Bath, Somerset, BA1 2JQ

E: bath@carterjonas.co.uk

A member of



Exclusive UK affiliate of

CHRISTIE'S
INTERNATIONAL REAL ESTATE

Classification L2 - Business Data

IMPORTANT INFORMATION

These particulars are for general information purposes only and do not represent an offer or contract or part of one. Carter Jonas or anyone in their employment has made every attempt to ensure that the particulars and other information provided are as accurate as possible and they are not intended to amount to advice on which you should rely as being factually accurate. Full information which may be relevant to your decision regarding the property can be found on the property listing on carterjonas.co.uk or a separately available material information sheet, and we would advise you to confirm the details of any material information prior to any offer being submitted. You should not assume that the property has all necessary planning, building regulations or other consents and Carter Jonas has not tested any services, facilities, or equipment. Any measurements and distances given are approximate only. Where Carter Jonas has been provided with a floorplan by a third party, we cannot guarantee that the floorplan has been measured in accordance with IPMS. Purchasers or prospective tenants must satisfy themselves of all of the aforementioned by independent inspection or otherwise. Our images only represent part of the property as it appeared at the time they were taken and do not represent the furnishings included; these are confirmed in a separate inventory. If you require further information, please contact us. *Administration fees may apply depending on tenancy type. Please contact your local branch for this information.