



**LONDON ROAD, WENDOVER, HP22**

£2,100 per month\*

**Carter Jonas**

# LONDON ROAD, WENDOVER, HP22

A detached 4 bedroom bungalow. Built in the 70's and extended in the 90's.

Ground Floor: Entrance hallway, living room, kitchen, utility

First Floor: Bathroom and 4 bedrooms, 1 with ensuite.

External: Driveway, garage, front garden and rear garden.

Unfurnished and available now for a 12 month tenancy

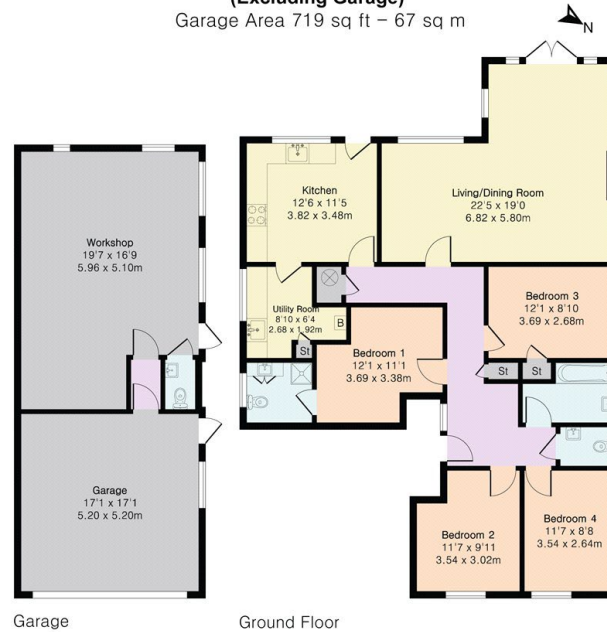
Pets considered. No access to loft.

There is an integrated oven and hob, but please be advised that

- Council Tax Band = F
- Deposit Required = £2,423
- Long Let, Minimum term 12 months
- 4 Bedrooms
- 2 Bathrooms
- Living Room
- WC
- Kitchen
- Utility
- Double Garage
- Workshop
- Garden
- EPC = E

Score	Energy rating	Current	Potential
92+	A		
81-91	B		
69-80	C		
55-68	D		63 D
39-54	E	54 E	
21-38	F		
1-20	G		

Approximate Gross Internal Area 1313 sq ft - 122 sq m  
(Excluding Garage)  
Garage Area 719 sq ft - 67 sq m



**Birmingham Lettings 0121 389 9670**

birmingham.lettings@carterjonas.co.uk



Classification L2 - Business Data

## IMPORTANT INFORMATION

These particulars are for general information purposes only and do not represent an offer or contract or part of one. Carter Jonas or anyone in their employment has made every attempt to ensure that the particulars and other information provided are as accurate as possible and they are not intended to amount to advice on which you should rely as being factually accurate. Full information which may be relevant to your decision regarding the property can be found on the property listing on [carterjonas.co.uk](http://carterjonas.co.uk) or a separately available material information sheet, and we would advise you to confirm the details of any material information prior to any offer being submitted. You should not assume that the property has all necessary planning, building regulations or other consents and Carter Jonas has not tested any services, facilities, or equipment. Any measurements and distances given are approximate only. Where Carter Jonas has been provided with a floorplan by a third party, we cannot guarantee that the floorplan has been measured in accordance with IPMS. Purchasers or prospective tenants must satisfy themselves of all of the aforementioned by independent inspection or otherwise. Our images only represent part of the property as it appeared at the time they were taken and do not represent the furnishings included; these are confirmed in a separate inventory. If you require further information, please contact us. \*Administration fees may apply depending on tenancy type. Please contact your local branch for this information.