



**12 CANA LANE, MARTON LE MOOR, RIPON, NORTH YORKSHIRE, HG4 5BT**  
£995 per month

**Carter Jonas**

# 12 CANA LANE, MARTON LE MOOR, RIPON, NORTH YORKSHIRE, HG4 5BT

- Available June
- Pets Considered
- EPC Rating E
- Oil Fired Central Heating
- Council Tax Band B

## THE PROPERTY

Available early June, we offer to you 12 Cana Lane, a lovely two bedroomed, semi-detached property located in the sought-after village of Marton-Le-Moor which forms part of the delightful Newby Hall Estate.

In brief, the ground floor briefly comprises of a well-proportioned reception room with an open feature fireplace, utility room, fully fitted kitchen-dining room area with plumbing in situ for a dishwasher as required and a door leading out into the fully enclosed garden with beautiful far-reaching views of open countryside.

Upstairs the property comprises of one spacious double bedroom and one single bedroom with a bathroom suite including a shower over the bath.

Externally, 12 Cana Lane offers a fully enclosed garden to the rear, off road parking for a number of vehicles and a large outbuilding which can be utilised for storage purposes.

This well-presented property offers spacious living accommodation, a beautiful location and would be ideal for anyone with commuter needs whilst benefitting from a lovely village location.

This property sits just under 4 miles from the busy town of Boroughbridge, 5 miles from the City of Ripon, 11 miles from Knaresborough, 15 miles out of the spa town of Harrogate and 23 miles from York City Centre. Easily accessible to schooling nearby with Ripon Grammar School only a short distance away.

Available early June, we offer to you 12 Cana Lane, a lovely two bedroomed, semi-detached property located in the sought-after village of Marton-Le-Moor which forms part of the delightful Newby Hall Estate.



The nearby cathedral City of Ripon and town of Harrogate offer excellent everyday shopping facilities and are both well known for their restaurants, theatres and numerous historic points of interest.

Please note no white goods or appliances will be provided with this property.

Pets considered.

Offered unfurnished.

The deposit will be £1,148 (5 week's rent) at a rental value of £995 per calendar month.

The holding deposit will be £229 (1 week's rent) at a rental value of £995 per calendar month.

---

## **ADDITIONAL INFORMATION**

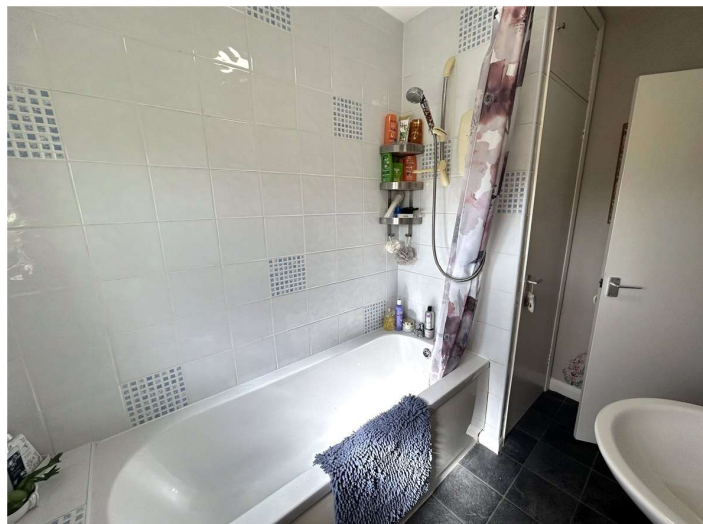
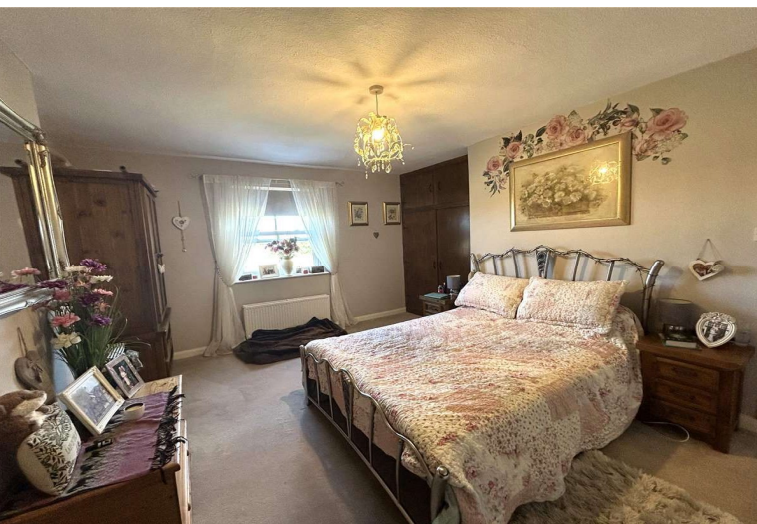
---

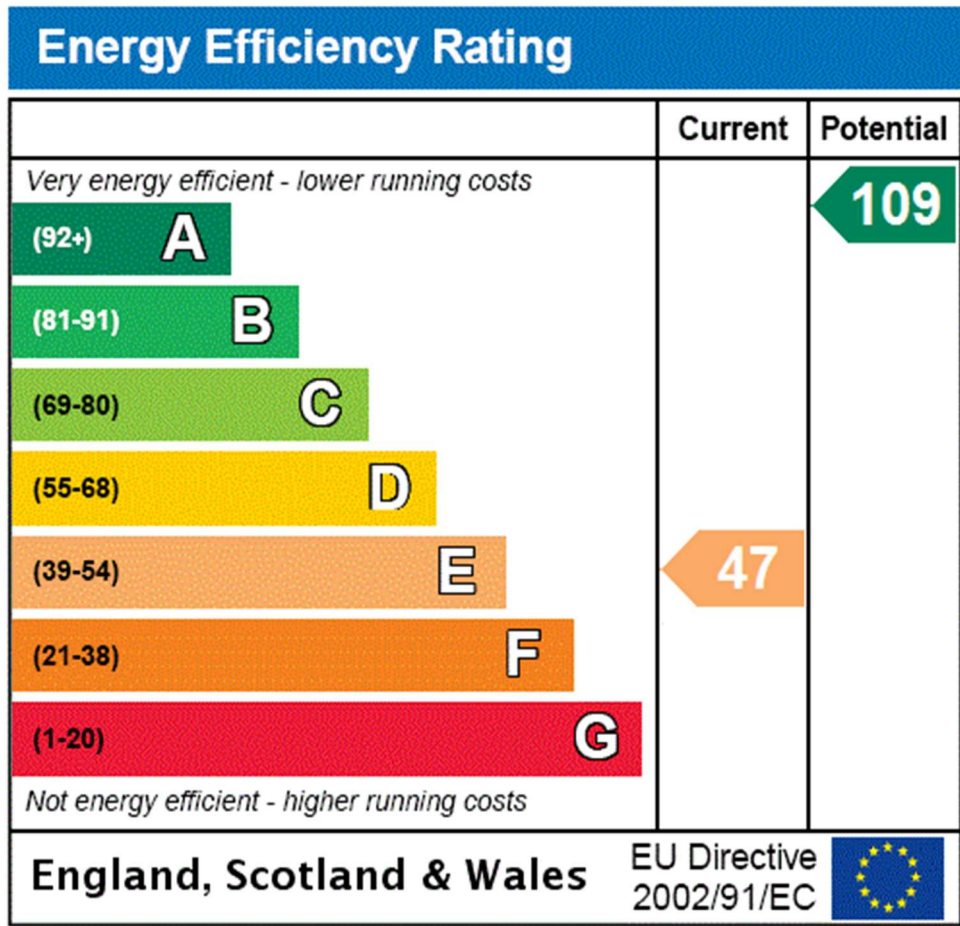
Viewing Strictly by appointment only

---

Local Authority North Yorkshire County Council  
Council Tax Band B

---





**T: 01423 523423**  
 Regent House, 13-15 Albert Street, Harrogate, HG1 1JX  
 E: harrogate.rural@carterjonas.co.uk



*Exclusive UK affiliate of*

**CHRISTIE'S**  
INTERNATIONAL REAL ESTATE

Classification L2 - Business Data

**IMPORTANT INFORMATION**

These particulars are for general information purposes only and do not represent an offer or contract or part of one. Carter Jonas or anyone in their employment has made every attempt to ensure that the particulars and other information provided are as accurate as possible and they are not intended to amount to advice on which you should rely as being factually accurate. Full information which may be relevant to your decision regarding the property can be found on the property listing on [carterjonas.co.uk](http://carterjonas.co.uk) or a separately available material information sheet, and we would advise you to confirm the details of any material information prior to any offer being submitted. You should not assume that the property has all necessary planning, building regulations or other consents and Carter Jonas has not tested any services, facilities, or equipment. Any measurements and distances given are approximate only. Where Carter Jonas has been provided with a floorplan by a third party, we cannot guarantee that the floorplan has been measured in accordance with IPMS. Purchasers or prospective tenants must satisfy themselves of all of the aforementioned by independent inspection or otherwise. Our images only represent part of the property as it appeared at the time they were taken and do not represent the furnishings included; these are confirmed in a separate inventory. If you require further information, please contact us. \*Administration fees may apply depending on tenancy type. Please contact your local branch for this information.