



GEORGE STREET, MARYLEBONE, W1H
£700 per week*

Carter Jonas

BERNARD HOUSE GEORGE STREET MARYLEBONE LONDON, W1H 5LA

- NOT SUITABLE FOR THREE SHARERS
- Professionally managed by The Portman Estate
- Three Bedrooms
- Two Bathrooms
- One Reception Room
- Second Floor
- Unfurnished (or furnished at separate cost)

THE PROPERTY

Second floor apartment, comprising three double bedrooms, two bathrooms, reception room with wood flooring and modern fully fitted kitchen, located close to the shops and transport links of the Edgware Road and Marble Arch.

The property is professionally managed by The Portman Estate.

Available for long term rental on an unfurnished basis, or furnished (at separate cost)

George Street is close to Marble Arch and all the fantastic high-end shops on Oxford Street such as, Selfridges. The location is excellent and very convenient for several transportation options. Hyde Park is easily accessible by foot for Green Spaces. Marble Arch station and Edgware Road station, both within 0.4 miles, are the closest tube stops (Approximately 0.6 miles).

The Portman Estate's 110 acres of land within Marylebone, London W1, has a rich heritage dating back to the 16th century and is the setting for continual investment in premium residential properties, shops and independent businesses. The Portman Estate includes key places of architectural and historical interest along with a vibrant blend of shops, including Portman Village, restaurants, wine-bars, hotels and garden squares - a perfect mix of leisure opportunities for residents in the heart of London's West End.

Bright three bedroom, second floor apartment located close to the shops and transport links of the Edgware Road and Marble Arch.



Holding deposit is 1 week's rent = £700 (at asking price)

Security deposit is 5 week's rent = £3,500 (at asking price £700pw)

Council Tax Band F

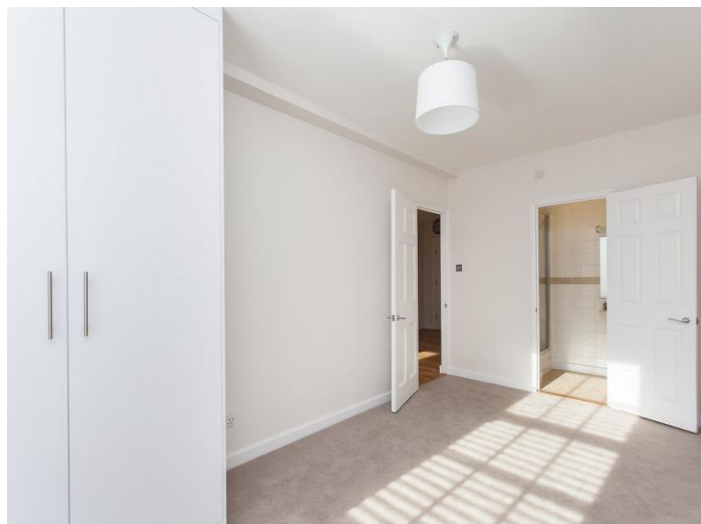
For the latest information on broadband and mobile coverage, please visit [/checker.ofcom](http://checker.ofcom) for the most up-to-date details.

ADDITIONAL INFORMATION

Offers Available for a minimum term of 12 months longer terms will be considered

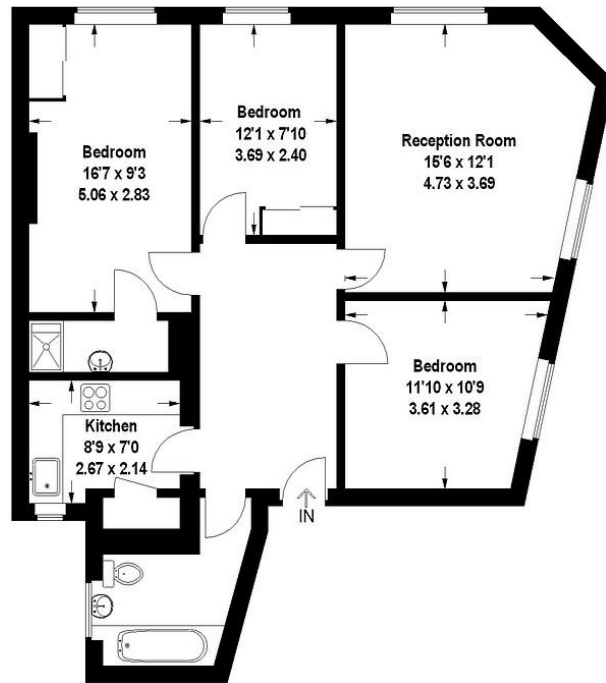
Viewing Strictly by appointment

Local Authority City of Westminster - Selective Licences - Council Tax Band F



George Street, W1

Approximate Gross Internal Area = 83 sq m / 893 sq ft



Second Floor

This plan is for layout guidance only. Not drawn to scale unless stated. Windows and door openings are approximate. Whilst every care is taken in the preparation of this plan, please check all dimensions, shapes and compass bearings before making any decisions reliant upon them.



Energy Efficiency Rating		Current	Potential
Very energy efficient - lower running costs			
(92+)	A		
(81-91)	B		
(69-80)	C	77	82
(55-68)	D		
(39-54)	E		
(21-38)	F		
(1-20)	G		
Not energy efficient - higher running costs			
England, Scotland & Wales		EU Directive 2002/91/EC	

T: 020 7486 8866

37 New Cavendish Street, London, W1G 9TL

E: marylebone.lettings@carterjonas.co.uk

A member of



Exclusive UK affiliate of

CHRISTIE'S
INTERNATIONAL REAL ESTATE

IMPORTANT INFORMATION

These particulars are for general information purposes only and do not represent an offer or contract or part of one. Carter Jonas or anyone in their employment has made every attempt to ensure that the particulars and other information provided are as accurate as possible and they are not intended to amount to advice on which you should rely as being factually accurate. Full information which may be relevant to your decision regarding the property can be found on the property listing on carterjonas.co.uk or a separately available material information sheet, and we would advise you to confirm the details of any material information prior to any offer being submitted. You should not assume that the property has all necessary planning, building regulations or other consents and Carter Jonas has not tested any services, facilities, or equipment. Any measurements and distances given are approximate only. Where Carter Jonas has been provided with a floorplan by a third party, we cannot guarantee that the floorplan has been measured in accordance with IPMS. Purchasers or prospective tenants must satisfy themselves of all of the aforementioned by independent inspection or otherwise. Our images only represent part of the property as it appeared at the time they were taken and do not represent the furnishings included; these are confirmed in a separate inventory. If you require further information, please contact us. *Administration fees may apply depending on tenancy type. Please contact your local branch for this information.