



**MOUNT STREET, MAYFAIR, W1K**  
£1,384.62 per week\*

**Carter Jonas**



# FLAT 9, MOUNT STREET, MAYFAIR, LONDON, W1K

A bright one-bedroom apartment with garden views situated on the third floor of a period building with a lift ideally located on this prime Mayfair Street.

- Furnished
- 1 Bedroom
- 1 Reception
- 1 Kitchen
- 1 Bathroom

## THE PROPERTY

With high ceilings and original features this apartment has been refurbished to an outstanding standard to create a stunning Mayfair residence.

Mayfair is London's most fashionable destination. With London's finest buildings, largest concentration of luxury hotels, best restaurants, bars, shopping, open spaces and hidden treasures all nestled together in a beautiful village setting.

Nearest Tube: Bond Street / Marble Arch

AST

The deposit will be £8,307.72 at a rental value of £1,384.62 (asking price)

Holding deposit = 1 weeks rent of 1,384.62

Deposit is 6 weeks rent (1,384.62 pw = £8,307.72 deposit)





ADDITIONAL INFORMATION	
Offers	Available for a minimum term of 12 months longer terms will be considered
Viewing	Strictly by appointment
Local Authority	Westminster County Council - Council Tax Band F

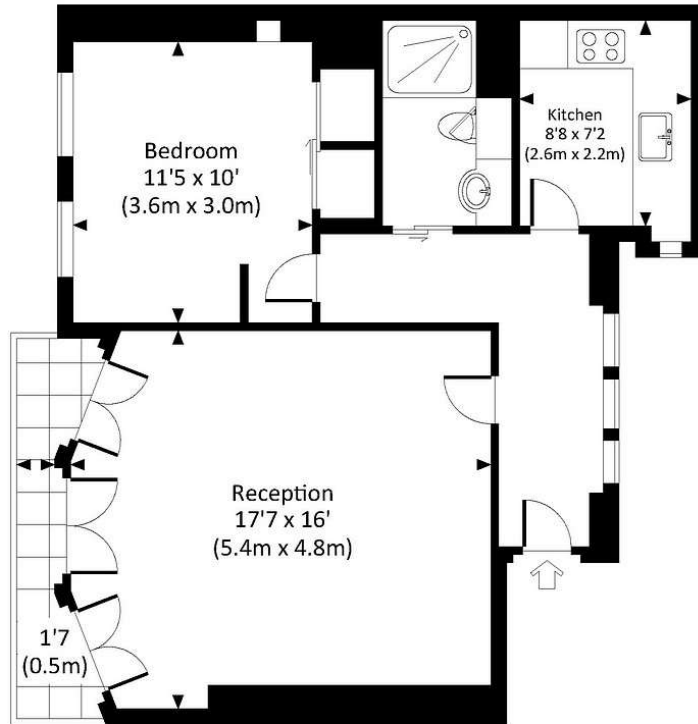
Minimum Term: 12 months  
 Westminster City Council Tax (Band F)  
 Mains Heating: Electric  
 Hot Water: Community Scheme  
 Parking: None included with apartment / On street may be available:  
 For eligibility for resident parking permits, please refer to the Westminster council website <https://www.westminster.gov.uk/parking> website for further details.  
 Mobile phone coverage and speeds can be checked here: [checker.ofcom.org.uk](http://checker.ofcom.org.uk), however, all providers are predicted to have good levels of service inside at this property.  
 Broadband speeds can be checked here: [checker.ofcom.org.uk](http://checker.ofcom.org.uk).

Score	Energy rating	Current	Potential
92+	A		
81-91	B		
69-80	C	73 C	73 C
55-68	D		
39-54	E		
21-38	F		
1-20	G		



## MOUNT STREET, W1K

Approx. gross internal area  
630 Sq.Ft. / 58.5 Sq.M.



THIRD FLOOR



All measurements have been made in accordance with RICS Code of Measuring Practice which are approximate only and only for illustrative purposes. For the avoidance of doubt, Dowling Jones Design shall not be liable for any reliance on these measurements. © 2015 www.dowlingjones.com 020 7620 9000

**T: 020 7493 0676**

18 Davies Street, Mayfair, London, W1K 3DS

E: [mayfair@carterjonas.co.uk](mailto:mayfair@carterjonas.co.uk)

A member of



*Exclusive UK affiliate of*

**CHRISTIE'S**  
INTERNATIONAL REAL ESTATE

Classification L2 - Business Data



### IMPORTANT INFORMATION

These particulars are for general information purposes only and do not represent an offer or contract or part of one. Carter Jonas or anyone in their employment has made every attempt to ensure that the particulars and other information provided are as accurate as possible and they are not intended to amount to advice on which you should rely as being factually accurate. Full information which may be relevant to your decision regarding the property can be found on the property listing on [carterjonas.co.uk](http://carterjonas.co.uk) or a separately available material information sheet, and we would advise you to confirm the details of any material information prior to any offer being submitted. You should not assume that the property has all necessary planning, building regulations or other consents and Carter Jonas has not tested any services, facilities, or equipment. Any measurements and distances given are approximate only. Where Carter Jonas has been provided with a floorplan by a third party, we cannot guarantee that the floorplan has been measured in accordance with IPMS. Purchasers or prospective tenants must satisfy themselves of all of the aforementioned by independent inspection or otherwise. Our images only represent part of the property as it appeared at the time they were taken and do not represent the furnishings included; these are confirmed in a separate inventory. If you require further information, please contact us. \*Administration fees may apply depending on tenancy type. Please contact your local branch for this information.