



WALTON CRESCENT, OXFORD, OX1

£2,100 per month*

Carter Jonas

WALTON CRESCENT, OXFORD, OXFORDSHIRE, OX1 2JQ

- 2 bedrooms
- 1 bathroom
- 1 reception room
- private entrance
- unfurnished
- upper floors
- no outside space
- parking permit
- modern kitchen
- professionally managed

THE PROPERTY

The property has a private entrance with stairs rising to the first floor opening onto a large landing. Sitting room with natural light from the large sash windows. Modern kitchen with integrated appliances and a newly fitted boiler. A modern bathroom with a shower over the bath. The upper floor has two double bedrooms, both with built in storage.

The property is available 10th August on an unfurnished basis and is eligible for on-street parking permits.

Jericho is a vibrant and lively place to live and highly desirable with its close proximity to the city centre.

Mains electricity, mains gas, mains water and drainage.

Internet & Mobile: Further information on availability and speeds can be found at checker.ofcom.org.uk

Council Tax Band: D - please check with Oxford City Council for current charges

EPC: D

Unfurnished

Flood risk: Low

A two double bedroom duplex maisonette in this converted Victorian property situated in popular Jericho.



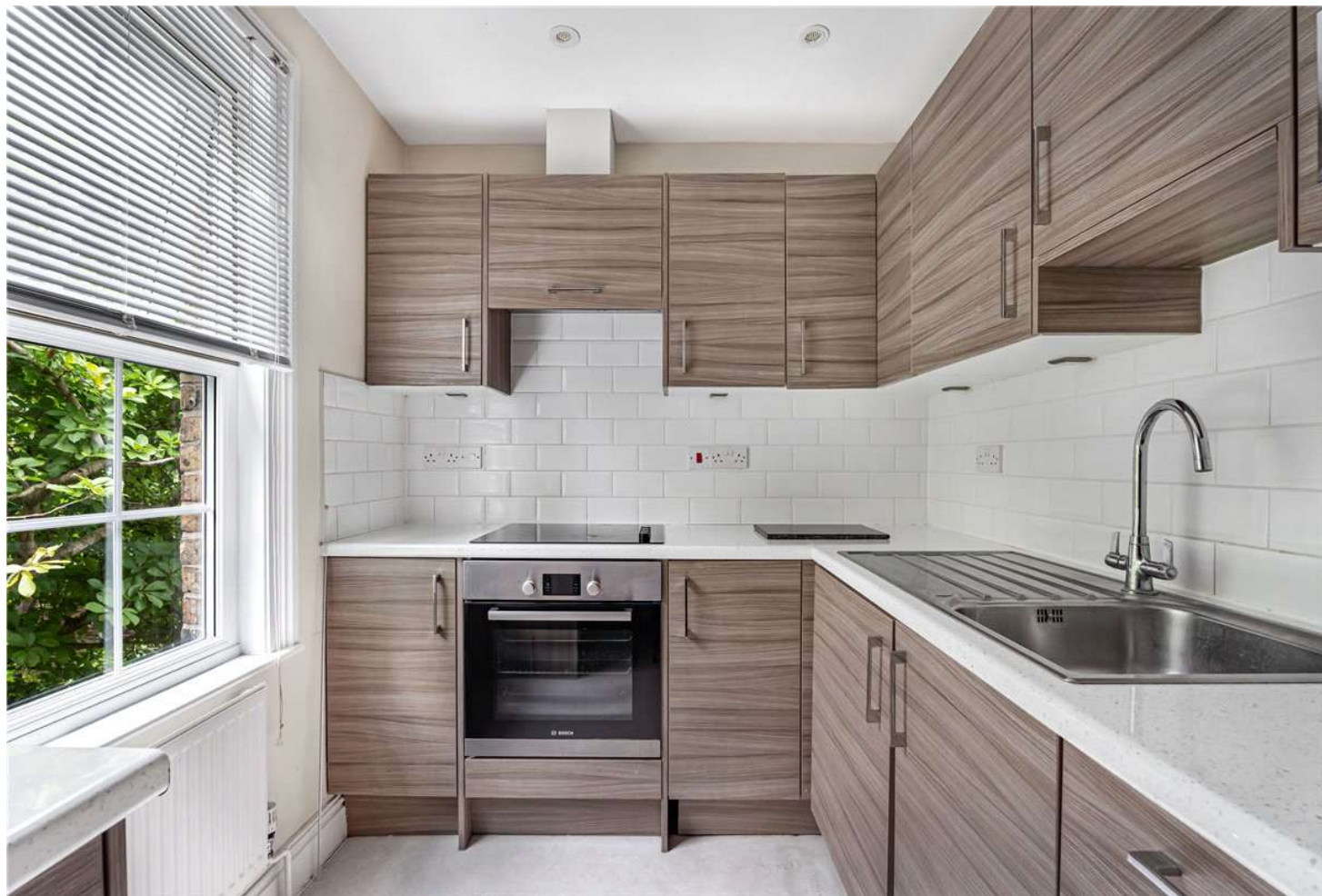
Holding deposit = 1 weeks rent £484

Deposit is 5 weeks rent = £2423

ADDITIONAL INFORMATION

Viewing Strictly by appointment

Local Authority Oxford City Council - Council Tax Band D



Approximate Gross Internal Area 775 sq ft - 71 sq m

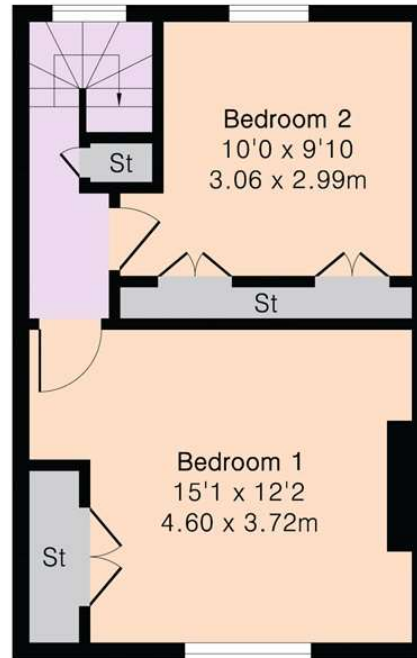
Ground Floor Area 35 sq ft – 3 sq m

First Floor Area 370 sq ft – 34 sq m

Second Floor Area 370 sq ft – 34 sq m



Ground Floor First Floor



Second Floor



Floor plan produced in accordance with RICS Property Measurement 2nd Edition. Although Pink Plan Ltd ensures the highest level of accuracy, measurements of doors, windows and rooms are approximate and no responsibility is taken for error, omission or misstatement. These plans are for representation purposes only and no guarantee is given on the total square footage of the property within this plan. The figure icon is for initial guidance only and should not be relied on as a basis of valuation.

Carter Jonas

T: 01865 511444

Mayfield House, 256 Banbury Road, Oxford, Oxfordshire, OX2 7DE

E: oxford.lettings@carterjonas.co.uk

A member of



Exclusive UK affiliate of

CHRISTIE'S
INTERNATIONAL REAL ESTATE

IMPORTANT INFORMATION

These particulars are for general information purposes only and do not represent an offer or contract or part of one. Carter Jonas or anyone in their employment has made every attempt to ensure that the particulars and other information provided are as accurate as possible and they are not intended to amount to advice on which you should rely as being factually accurate. Full information which may be relevant to your decision regarding the property can be found on the property listing on carterjonas.co.uk or a separately available material information sheet, and we would advise you to confirm the details of any material information prior to any offer being submitted. You should not assume that the property has all necessary planning, building regulations or other consents and Carter Jonas has not tested any services, facilities, or equipment. Any measurements and distances given are approximate only. Where Carter Jonas has been provided with a floorplan by a third party, we cannot guarantee that the floorplan has been measured in accordance with IPMS. Purchasers or prospective tenants must satisfy themselves of all of the aforementioned by independent inspection or otherwise. Our images only represent part of the property as it appeared at the time they were taken and do not represent the furnishings included; these are confirmed in a separate inventory. If you require further information, please contact us. *Administration fees may apply depending on tenancy type. Please contact your local branch for this information.