



THE CROFT, FLAXTON, YORK
£875,000

Carter Jonas

THE CROFT

FLAXTON, YO60 7RT

The Croft is a charming four-bedroom farmhouse nestled in the delightful village of Flaxton. This picturesque home combines modern living with classic farmhouse character, making it a perfect house for modern family life.

The ground floor boasts a stylish and contemporary kitchen, seamlessly integrating functionality with aesthetic appeal. Three inviting reception rooms – a dining room, sitting room, and lounge – each feature original fireplaces, creating a warm and welcoming atmosphere ideally suited for both relaxation and entertaining.

Upstairs, you'll find four generously sized bedrooms, including two with en-suite shower rooms, along with a well-appointed house bathroom. The layout provides ample space for family members and guests alike.

The outdoor space is equally impressive, set within approximately 0.6 acres of well-maintained land. The rear garden includes a 2 storey Garden Lodge that offers a variety of options including the option of a separate annex, business studio and office subject to the appropriate works and planning approval. Additionally, a triple timber-framed carport provides plenty of parking, while a covered porch area serves as the perfect setting for outdoor entertaining. The Croft is a unique opportunity to enjoy country living in a vibrant community.

The village of Flaxton lies just to the north of York, almost at the foot of the Howardian Hills, which rise away from the Vale of York, providing a very scenic backdrop. The village itself retains a remarkably rural feel with its wide grass verges and picturesque setting. It is within easy commuting distance of both York and Leeds via the nearby A64, with trains to London in under 2 hours. Popular with families, the village is well placed for access to excellent schools, including Bootham, St Peter's and The Mount, and is within the catchment area of Sand Hutton Primary and the well-regarded Huntington School, for which there is a school bus service. The area also benefits from a range of fantastic public houses.

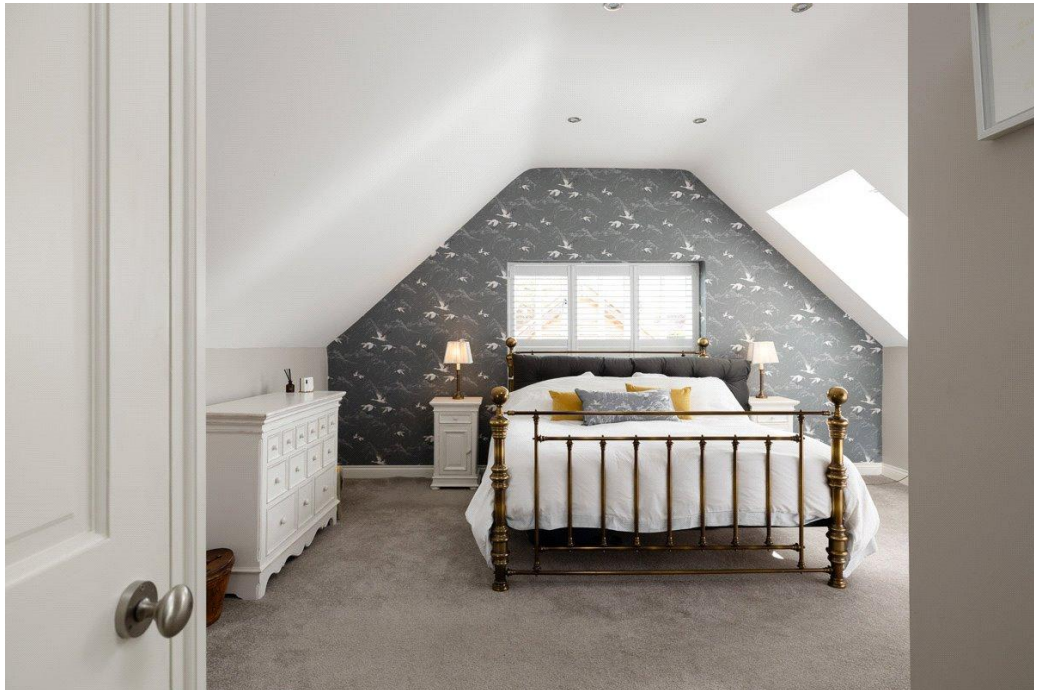
TENURE Freehold

LOCAL AUTHORITY North Yorkshire County Council

EPC BAND D

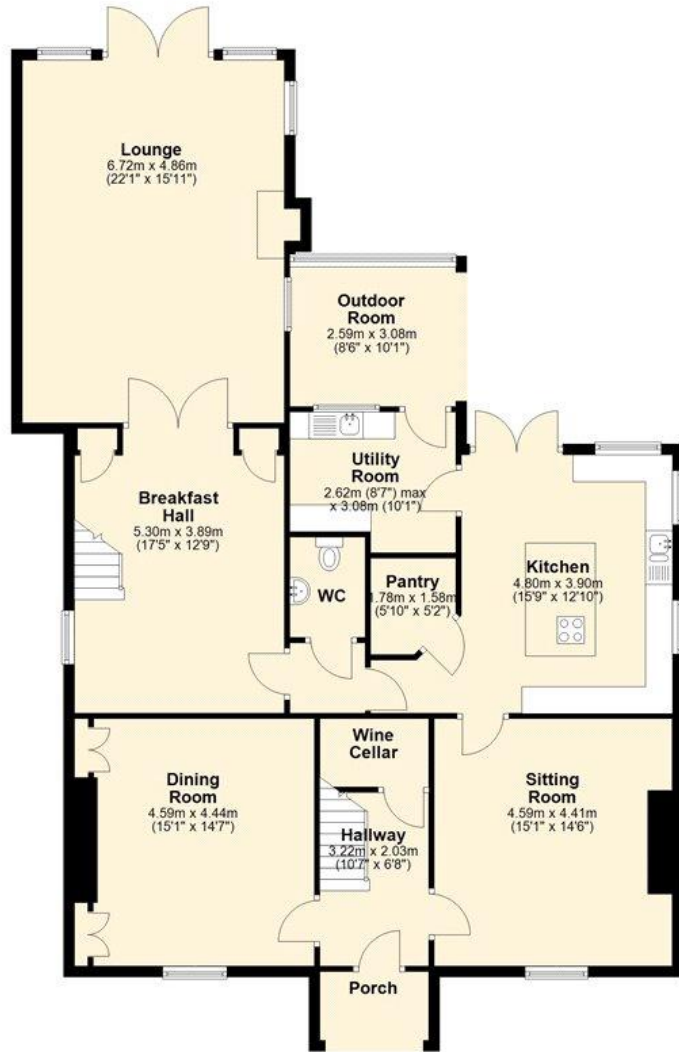
A 4 BEDROOM PROPERTY WITH A PERFECT BLEND OF CONTEMPORARY AND PERIOD FEATURES TO CREATE A STUNNING HOUSE; SET IN 0.6 ACRES IN A POPULAR VILLAGE TO THE NORTH OF YORK ON THE FOOT OF THE HOWARDIAN HILLS.



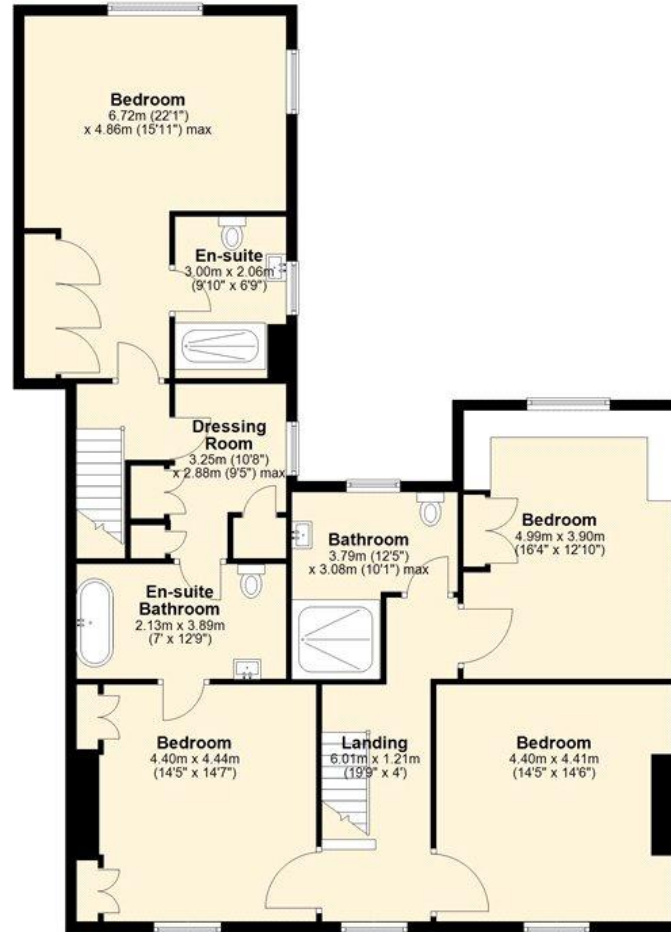




Ground Floor
Approx. 153.9 sq. metres (1656.8 sq. feet)



First Floor
Approx. 136.0 sq. metres (1464.4 sq. feet)



Total area: approx. 290.0 sq. metres (3121.2 sq. feet)
The Croft, YORK

Energy Efficiency Rating		Current	Potential
Very energy efficient - lower running costs			
(92-)	A		
(81-91)	B		
(69-80)	C		
(55-68)	D	59	72
(39-54)	E		
(21-38)	F		
(1-20)	G		
Not energy efficient - higher running costs			
England, Scotland & Wales		EU Directive 2002/91/EC	

York 01904 558200

york@carterjonas.co.uk
82 Micklegate, York, YO1 6LF

carterjonas.co.uk
Offices throughout the UK

Exclusive UK affiliate of

CHRISTIE'S
INTERNATIONAL REAL ESTATE

IMPORTANT INFORMATION

These particulars are for general information purposes only and do not represent an offer of contract or part of one. Carter Jonas has made every attempt to ensure that the particulars and other information provided are as accurate as possible and are not intended to amount to advice on which you should rely as being factually accurate. You should not assume that the property has all necessary planning, building regulations or other consents and Carter Jonas have not tested any services, facilities or equipment. Any measurements and distances given are approximate only. Purchasers must satisfy themselves of all of the aforementioned by independent inspection or otherwise. Although we make reasonable efforts to update our information, neither Carter Jonas LLP nor anyone in its employment or acting on its behalf makes any representations warranties or guarantees, whether express or implied, in relation to the property, or that the content in these particulars is accurate, complete or up to date. Our images only represent part of the property as it appeared at the time they were taken. If you require further information please contact us.