



WALTON CRESCENT, OXFORD, OX1

£1,500 per month*

Carter Jonas

WALTON CRESCENT, OXFORD, OX1 2JQ

- Open plan living/dining/kitchenette
- 1 bedroom
- shower room
- Use of shared garden
- Use of shared laundry
- unfurnished
- professionally managed

THE PROPERTY

Suitable for a single occupant only. There is a front facing, light living/dining room with a compact kitchenette. The bedroom is to the rear of the property, it is well proportioned and has built-in storage space. Separate shower room. No parking available. There is a communal laundry room and garden shared with three other residents.

Jericho is a vibrant and lively place to live and highly desirable with its close proximity to the city centre. Voted by The Times as one of the 30 coolest places to live in Britain in 2019, Jericho has an art house cinema, a number of popular pubs and restaurants, and is in an ideal location for access to the University departments. Oxford canal and Port meadow are close by, providing space to enjoy peace and tranquillity. Oxford train station is less than a mile away with regular trains to Reading and London, in addition to frequent buses from Gloucester Green in the city centre.

Available 29th August on an unfurnished basis

Council tax band B - Please see Oxford City website for current charges.

EPC: C

Flood Risk: Low

Holding deposit = 1 weeks rent £1730

Deposit = 5 weeks rent = £346

Mains gas, electricity, water and drainage.

An upper ground floor self contained one bedroom apartment in a converted Victorian property situated in popular Jericho. Suitable for a single occupant only.



Internet & Mobile: Further information on availability and speeds can be found at checker.ofcom.org.uk

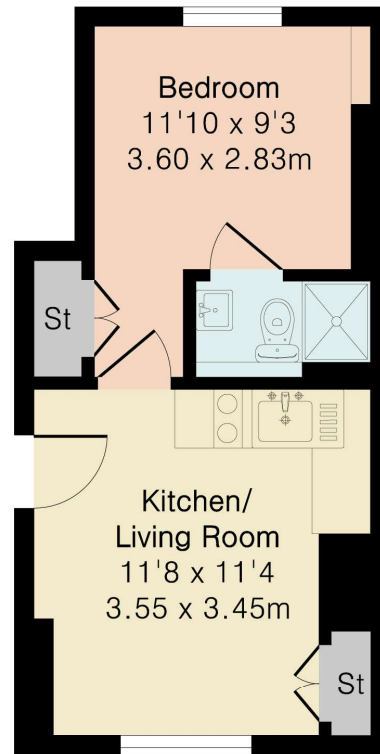
ADDITIONAL INFORMATION

Viewing Strictly by appointment

Local Authority Oxford City Council - Council Tax Band B



Approximate Gross Internal Area 254 sq ft - 24 sq m



Ground Floor



Floor plan produced in accordance with RICS Property Measurement 2nd Edition. Although Pink Plan Ltd ensures the highest level of accuracy, measurements of doors, windows and rooms are approximate and no responsibility is taken for error, omission or misstatement. These plans are for representation purposes only and no guarantee is given on the total square footage of the property within this plan. The figure icon is for initial guidance only and should not be relied on as a basis of valuation.

T: 01865 511444

Mayfield House, 256 Banbury Road, Oxford, Oxfordshire, OX2 7DE

E: oxford.lettings@carterjonas.co.uk

A member of



Carter Jonas

Exclusive UK affiliate of

CHRISTIE'S
INTERNATIONAL REAL ESTATE

Classification L2 - Business Data



IMPORTANT INFORMATION

These particulars are for general information purposes only and do not represent an offer or contract or part of one. Carter Jonas or anyone in their employment has made every attempt to ensure that the particulars and other information provided are as accurate as possible and they are not intended to amount to advice on which you should rely as being factually accurate. Full information which may be relevant to your decision regarding the property can be found on the property listing on carterjonas.co.uk or a separately available material information sheet, and we would advise you to confirm the details of any material information prior to any offer being submitted. You should not assume that the property has all necessary planning, building regulations or other consents and Carter Jonas has not tested any services, facilities, or equipment. Any measurements and distances given are approximate only. Where Carter Jonas has been provided with a floorplan by a third party, we cannot guarantee that the floorplan has been measured in accordance with IPMS. Purchasers or prospective tenants must satisfy themselves of all of the aforementioned by independent inspection or otherwise. Our images only represent part of the property as it appeared at the time they were taken and do not represent the furnishings included; these are confirmed in a separate inventory. If you require further information, please contact us. *Administration fees may apply depending on tenancy type. Please contact your local branch for this information.