



**SEYMOUR STREET, MARYLEBONE, W1H**

£1,200 per week\*

**Carter Jonas**

---

## **SEYMOUR STREET MARYLEBONE LONDON W1H 7JD**

- Split level apartment
- Two bathrooms
- Open plan kitchen
- 1 Reception Room
- Period building
- Over 1000 sq. ft.
- Unfurnished or furnished at additional cost
- Professionally managed by Portman Estate

### **THE PROPERTY**

Comprising of a large open plan kitchen and reception area with two double bedrooms and two bathrooms on the lower ground floor.

Available for long term rental on an unfurnished basis, or furnished (at separate cost)

The property is professionally managed by The Portman Estate.

Seymour Street is located on the luscious Hyde Park Estate, close to the north of Hyde Park, one of the most famous urban parks worldwide. Mayfair and Knightsbridge are both within a leisurely stroll, as are the West End, Marylebone, Portman Village, the artisan clothing, and food stores of Connaught Street, and many more locations. It is conveniently close to Paddington stations, which are home to the Heathrow Express, National Rail, Circle, District, Bakerloo, Crossrail, and Hammersmith & City Lines, and Marble Arch Underground Station, which is dedicated to the Central line and is just 0.2 miles away.

The Portman Estate is a prestigious property portfolio located in the heart of central London, covering 110 acres of prime real estate in Marylebone. Renting through The Portman Estate comes with the advantage of an in-house property management team, providing responsive, hands-on service to ensure residents' needs are met

**A lovely two bedroom two bathroom maisonette situated within a period building ideally located just minutes from Marble Arch station and the fashionable Portman Village.**



quickly and efficiently. This dedicated team helps maintain the quality of living, handling everything from routine maintenance to emergency repairs, making the rental experience hassle-free.

Holding deposit is 1 week's rent = £1,200 (at asking price)

Security deposit is 6 week's rent = £7,200 (at asking price £1,200pw)

Council Tax Band E

---

## ADDITIONAL INFORMATION

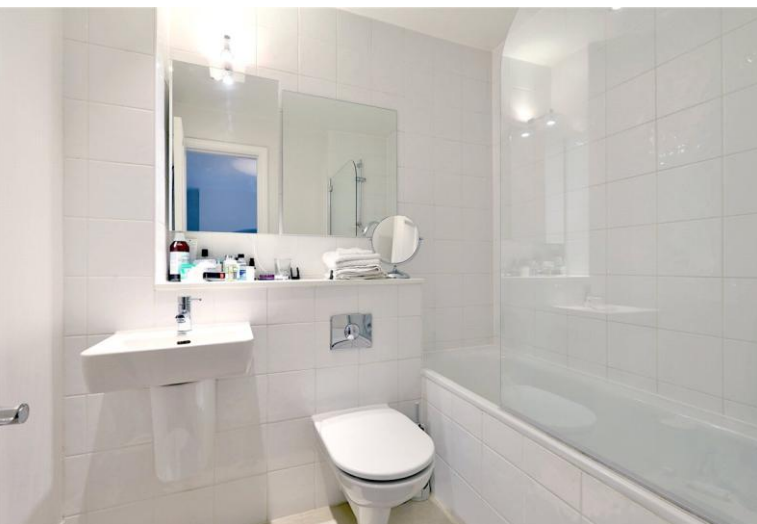
---

Viewing Strictly by appointment

Local Authority City of Westminster - Selective Licences - Council Tax Band E

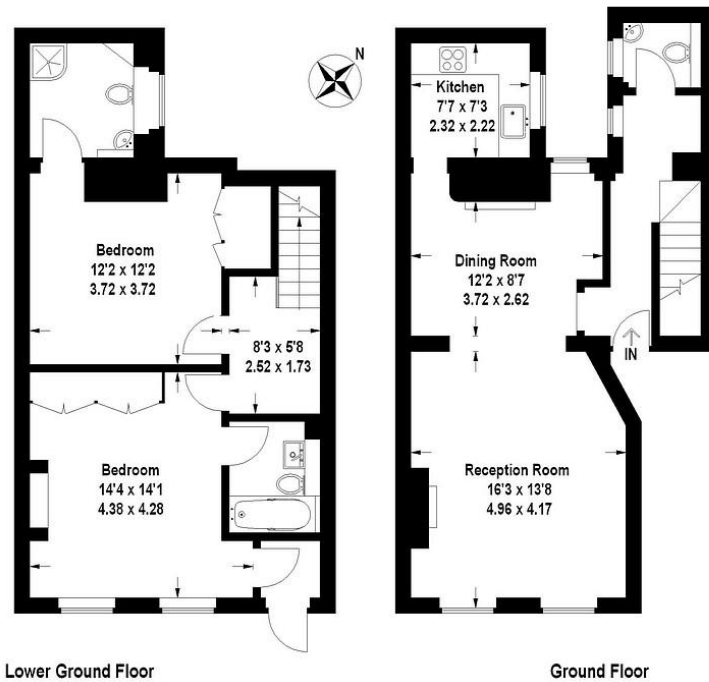
---

Energy Efficiency Rating		
	Current	Potential
Very energy efficient - lower running costs		
(92+) <b>A</b>		
(81-91) <b>B</b>		
(69-80) <b>C</b>		
(55-68) <b>D</b>		
(39-54) <b>E</b>		
(21-38) <b>F</b>		
(1-20) <b>G</b>		
Not energy efficient - higher running costs		
	74	81
England, Scotland & Wales	EU Directive 2002/91/EC	



## Seymour Street, W1

Approximate Gross Internal Area  
100 sq m / 1076 sq ft



This plan is for layout guidance only. Not drawn to scale unless stated. Windows and door openings are approximate. Whilst every care is taken in the preparation of this plan, please check all dimensions, shapes and compass bearings before making any decisions reliant upon them. (ID66169)



T: 020 7486 8866

37 New Cavendish Street, London, W1G 9TL

E: marylebone.lettings@carterjonas.co.uk



Exclusive UK affiliate of

**CHRISTIE'S**  
INTERNATIONAL REAL ESTATE

### IMPORTANT INFORMATION

These particulars are for general information purposes only and do not represent an offer or contract or part of one. Carter Jonas or anyone in their employment has made every attempt to ensure that the particulars and other information provided are as accurate as possible and they are not intended to amount to advice on which you should rely as being factually accurate. Full information which may be relevant to your decision regarding the property can be found on the property listing on [carterjonas.co.uk](http://carterjonas.co.uk) or a separately available material information sheet, and we would advise you to confirm the details of any material information prior to any offer being submitted. You should not assume that the property has all necessary planning, building regulations or other consents and Carter Jonas has not tested any services, facilities, or equipment. Any measurements and distances given are approximate only. Where Carter Jonas has been provided with a floorplan by a third party, we cannot guarantee that the floorplan has been measured in accordance with IPMS. Purchasers or prospective tenants must satisfy themselves of all of the aforementioned by independent inspection or otherwise. Our images only represent part of the property as it appeared at the time they were taken and do not represent the furnishings included; these are confirmed in a separate inventory. If you require further information, please contact us. \*Administration fees may apply depending on tenancy type. Please contact your local branch for this information.