



BROOK STREET, MAYFAIR, W1K
£12,000 per week*

Carter Jonas

3 GREYBROOK HOUSE, BROOK STREET, MAYFAIR, LONDON, W1K 5DH

- 3 Bedrooms
- 2 Bathrooms
- Shower Room
- Reception Room
 - Kitchen
 - Guest WC
 - Utility Room

THE PROPERTY

This Grade II listed, six-storey Art Deco building was designed by Sir John Burnett and Partners, who were also responsible for the King Edward VII gallery at the British Museum and Unilever House.

Completely refurbished to a phenomenally high standard, the interior of Greybrook House reprises to spectacular effect the Art Deco theme found on the exterior and the Claridge's façade opposite.

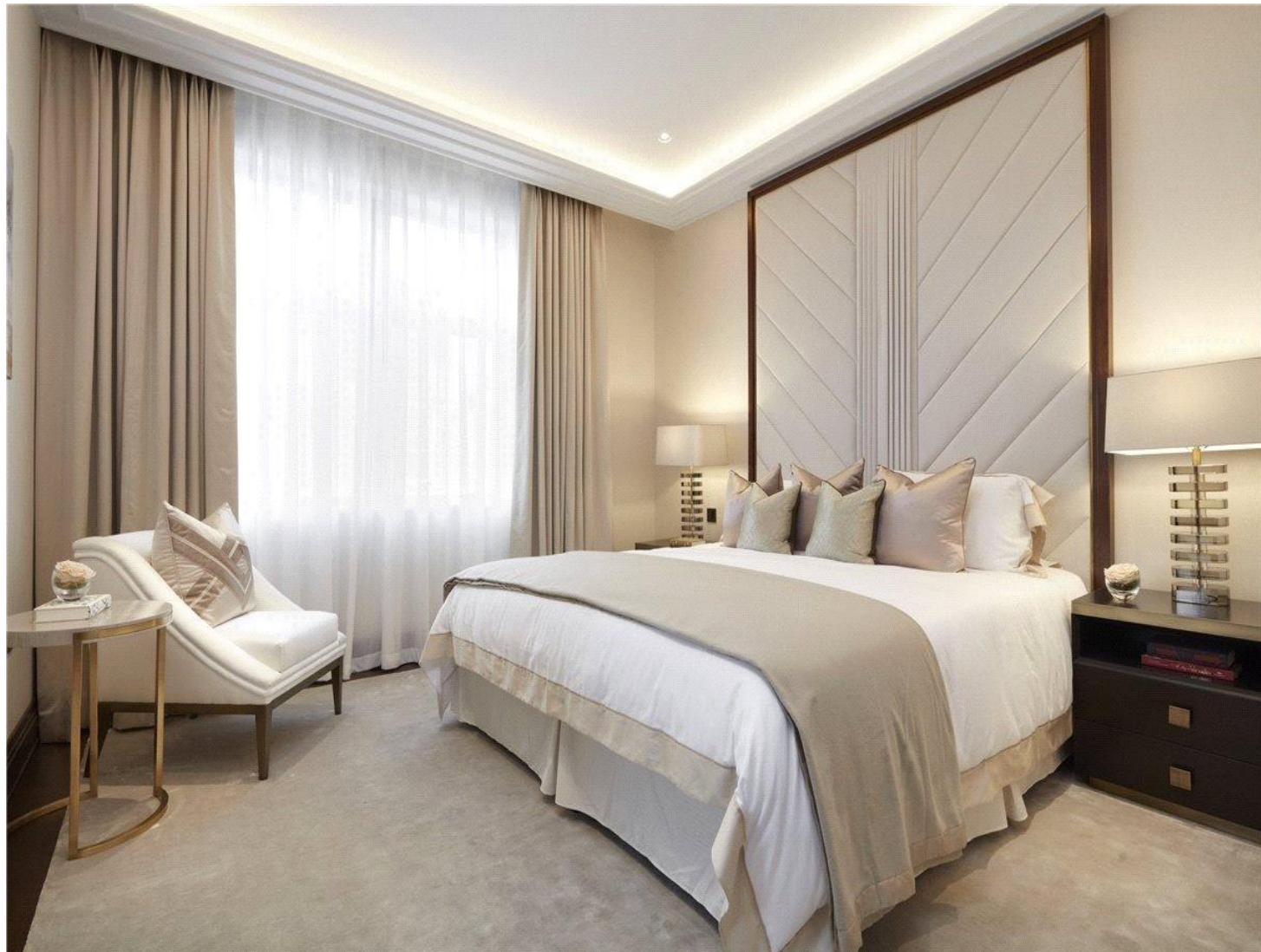
The exquisite craftsmanship, everywhere in evidence, allows for a seamless blending of one of history's most recognisable design periods with more contemporary elements.

From the street, bronze doors set into the monumental white Portland stone façade give access to a high ceilinged lobby whose refined details and elegant lift carriage give promise of luxury to come.

Those expectations are amply fulfilled when on leaving the lift by private code you enter a hushed domain of extravagant beauty combining jewel like details, bespoke joinery, natural stone and subtle lighting.

Technology is discreetly and seamlessly layered into each apartment. Located in the heart of Mayfair, London's most exclusive residential and retail district, Greybrook House is a building exemplifying the convenience, luxury and drama to which the best of modern living aspires.

Newly developed lateral flat adjacent to Claridges. Impressive high ceilings with marble flooring.



NHA

The deposit will be £72,000 at a rental value of £12,000 per week (asking price)

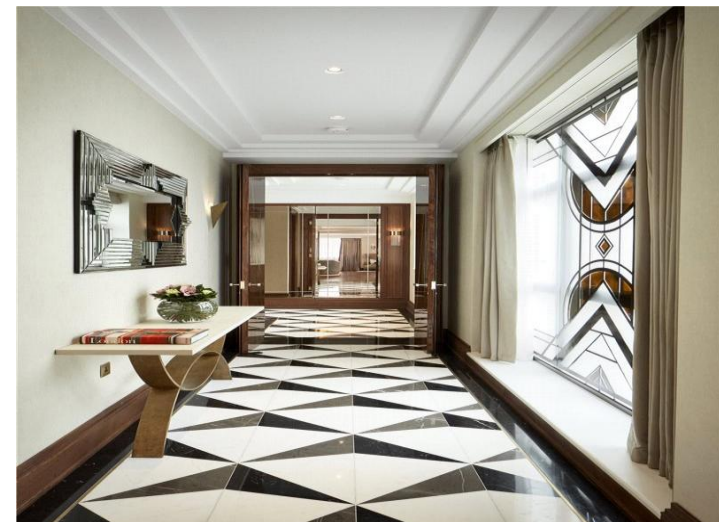
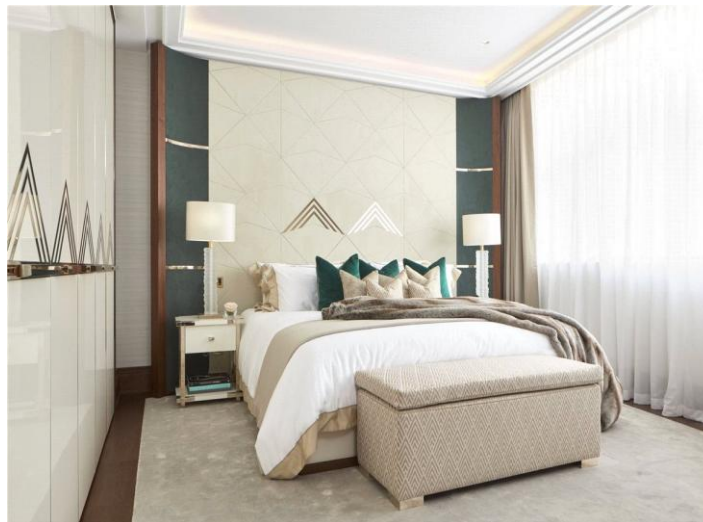
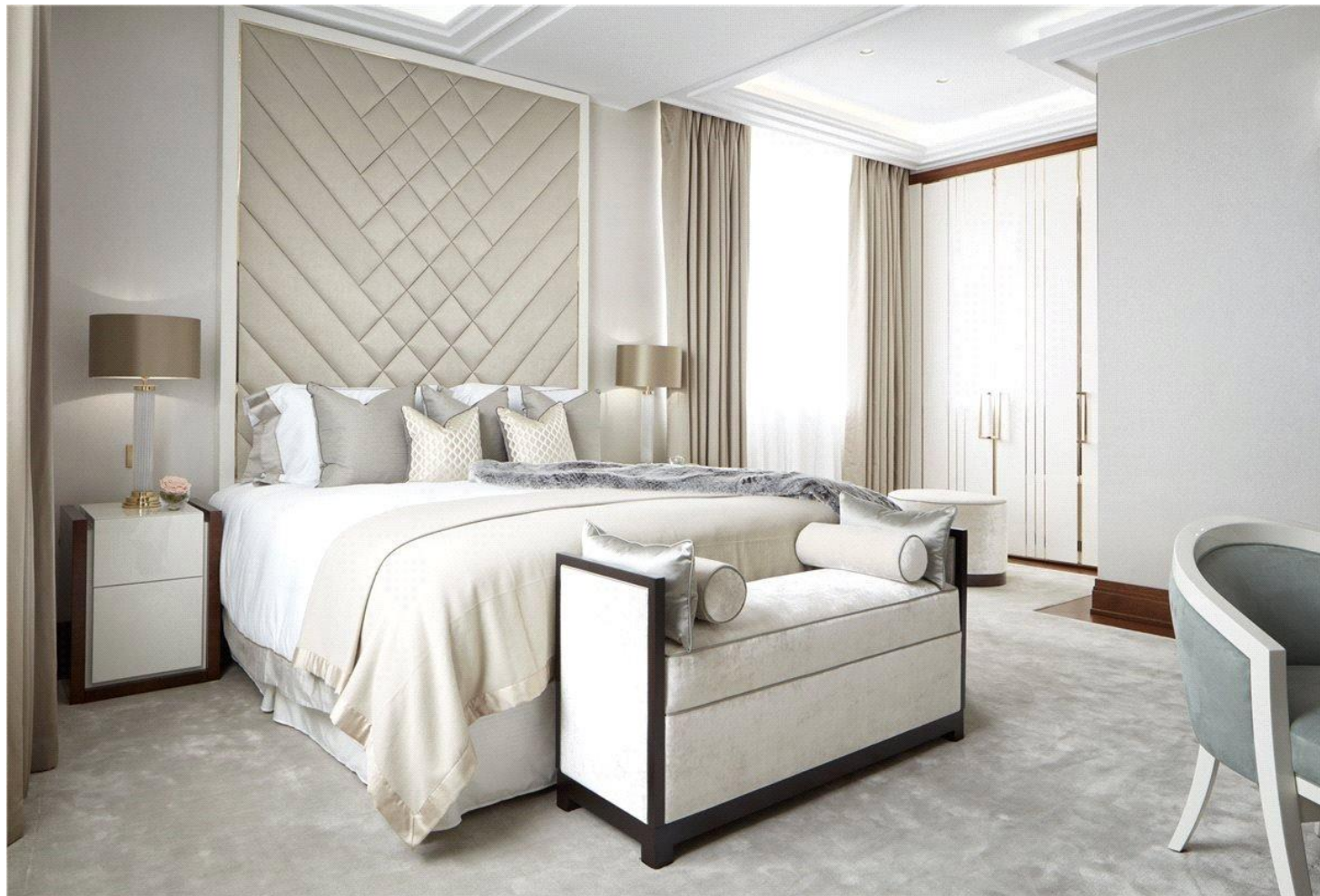
Holding deposit = 1 weeks rent of £12,000 per week

Deposit is 6 weeks rent (£12,000 per week = £37,500 deposit)

For the latest information on broadband and mobile coverage, please visit the Ofcom website <https://checker.ofcom.org.uk/en-gb/broadband-coverage>.

ADDITIONAL INFORMATION

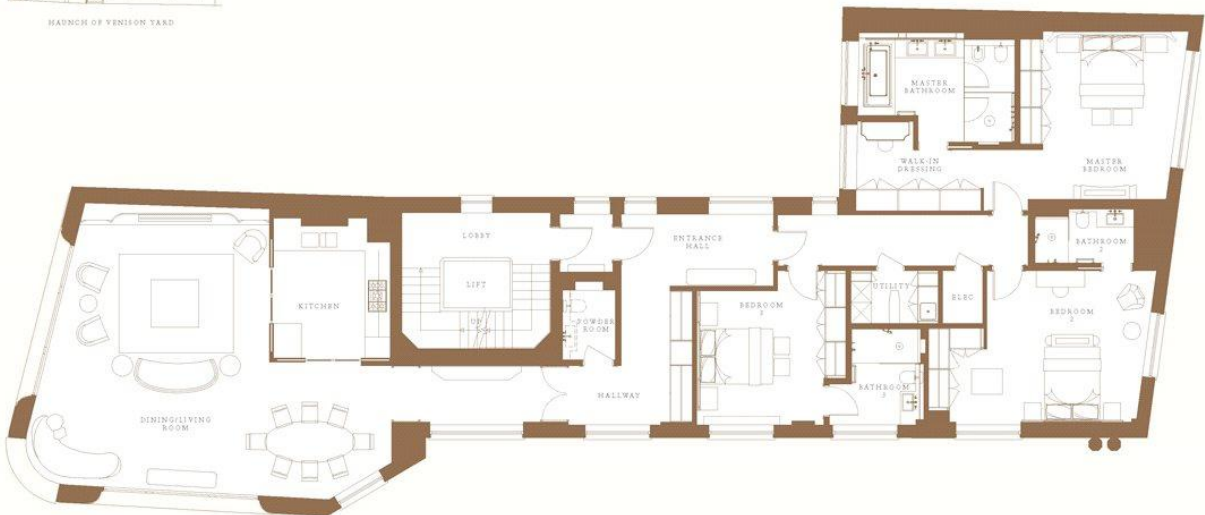
Offers	Available for a minimum term of 12 months longer terms will be considered
Viewing	Strictly by appointment
Local Authority	Westminster City Council - Council Tax Band H



APARTMENTS 1-3



Floors
1, 2 & 3
2700 sq ft



LIVING 34.4' x 24.6'
 KITCHEN 12.1' x 10.8'
 MASTER BEDROOM 15.7' x 13.8'
 BEDROOM 1 16.1' x 14.4'
 BEDROOM 3 12.5' x 11.9'

38 / 39

Score	Energy rating	Current	Potential
92+	A		
81-91	B		
69-80	C	82 B	82 B
55-68	D		
39-54	E		
21-38	F		
1-20	G		

T: 020 7493 0676
 18 Davies Street, Mayfair, London, W1K 3DS
 E: mayfair.lettings@carterjonas.co.uk



Exclusive UK affiliate of
CHRISTIE'S
 INTERNATIONAL REAL ESTATE

IMPORTANT INFORMATION

These particulars are for general information purposes only and do not represent an offer or contract or part of one. Carter Jonas or anyone in their employment has made every attempt to ensure that the particulars and other information provided are as accurate as possible and they are not intended to amount to advice on which you should rely as being factually accurate. Full information which may be relevant to your decision regarding the property can be found on the property listing on carterjonas.co.uk or a separately available material information sheet, and we would advise you to confirm the details of any material information prior to any offer being submitted. You should not assume that the property has all necessary planning, building regulations or other consents and Carter Jonas has not tested any services, facilities, or equipment. Any measurements and distances given are approximate only. Where Carter Jonas has been provided with a floorplan by a third party, we cannot guarantee that the floorplan has been measured in accordance with IPMS. Purchasers or prospective tenants must satisfy themselves of all of the aforementioned by independent inspection or otherwise. Our images only represent part of the property as it appeared at the time they were taken and do not represent the furnishings included; these are confirmed in a separate inventory. If you require further information, please contact us. *Administration fees may apply depending on tenancy type. Please contact your local branch for this information.