



**CHARLES STREET, LONDON, W1J**

£1,980 per week\*

**Carter Jonas**

---

# FLAT 9, CHARLES STREET, LONDON, W1J 5DG

- Beautifully Refurbished One-Bedroom Apartment
  - Prestigious Mayfair Location
- Spacious Double Bedroom with En Suite Shower Room
- Elegant Reception and Dining Room Ideal for Entertaining
  - Contemporary Fully Fitted Kitchen
  - Additional Guest WC
- Positioned on an Upper Floor with Excellent Natural Light
  - Lift Access
  - Porter Service
- Offered Unfurnished for Personalisation
  - EPC Rating B
- Moments from Luxury Boutiques, Fine Dining & Excellent Transport Links

## LOCATION

Set within one of Mayfair's most desirable locations, residents benefit from immediate access to world-class restaurants, luxury boutiques, renowned hotels, and excellent transport connections, all while enjoying the charm and exclusivity synonymous with this prestigious London neighbourhood.

Nearest Tube: Green Park and Bond Street.

## THE PROPERTY

Situated within an elegant Mayfair address, this beautifully refurbished one-bedroom apartment offers an exceptional blend of contemporary sophistication and timeless design.

Positioned on an upper floor, the apartment is flooded with natural light, creating a bright and inviting atmosphere throughout. Thoughtfully redesigned with refined finishes and clean architectural lines, the property provides a stylish and versatile living space suited to modern lifestyles.

A beautifully refurbished one-bedroom apartment set within an elegant Mayfair address. Positioned on an upper floor, with lift and porter. Located in one of London's most prestigious neighbourhoods, the property combines timeless elegance with modern living.



The generous proportions and elevated position enhance both the sense of space and privacy, while the neutral, unfurnished interiors offer the perfect opportunity for a tenant to personalise the home to their own taste and style. Every aspect of the refurbishment has been carefully considered to deliver a seamless balance of comfort, practicality, and understated luxury.

Offering elegant city living in a truly exceptional setting, this apartment is ideally suited to professionals or individuals seeking a refined central London residence.

\* CGI furniture in Images

NHA

The deposit will be £11,880 at a rental value of £1,980 per week (asking price)

Holding deposit = 1 weeks rent of £1,980 per week

Deposit is 6 weeks rent (£1,980 per week = £11,880 deposit)

For the latest information on broadband and mobile coverage, please visit the Ofcom website <https://checker.ofcom.org.uk/en-gb/broadband-coverage>.

---

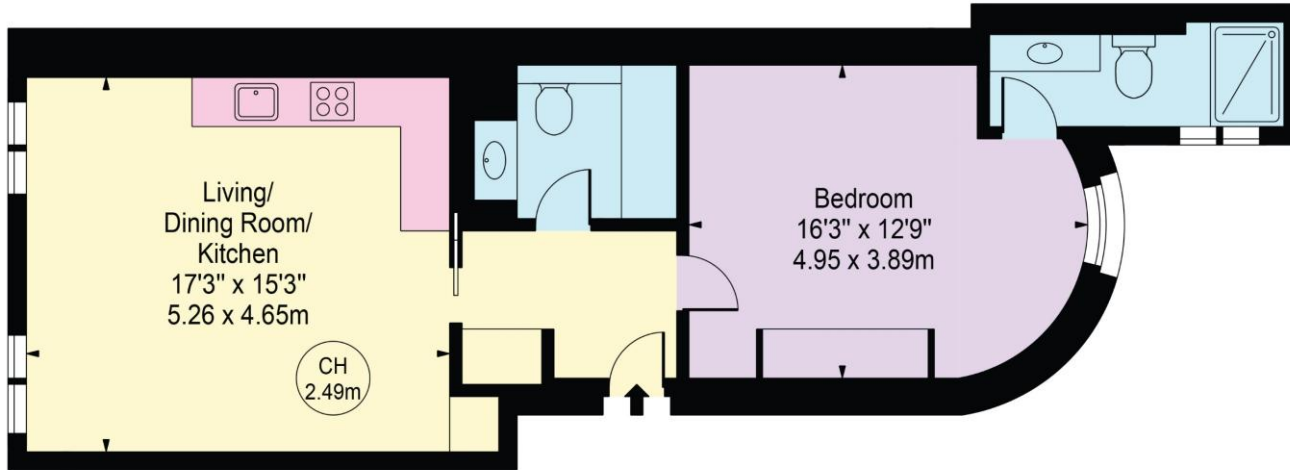
## **ADDITIONAL INFORMATION**

Offers	Available for a minimum term of 12 months longer terms will be considered
Viewing	Strictly by appointment
Local Authority	Westminster City Council - Council Tax Band G



## Charles Street

Approx. Gross Internal Area 632 Sq Ft - 58.71 Sq M



### Fourth Floor

For Illustration Purposes Only - Not To Scale

This floor plan should be used as a general outline for guidance only and does not constitute in whole or in part an offer or contract. Any intending purchaser or lessee should satisfy themselves by inspection, searches, enquiries and full survey as to the correctness of each statement. Any areas, measurements or distances quoted are approximate and should not be used to value a property or be the basis of any sale or let.  
Copyright Morriarti Photography & Design LTD



T: 020 7493 0676

18 Davies Street, Mayfair, London, W1K 3DS

E: [mayfair.lettings@carterjonas.co.uk](mailto:mayfair.lettings@carterjonas.co.uk)

A member of



Exclusive UK affiliate of

**CHRISTIE'S**  
INTERNATIONAL REAL ESTATE

Classification L2 - Business Data

### IMPORTANT INFORMATION

These particulars are for general information purposes only and do not represent an offer or contract or part of one. Carter Jonas or anyone in their employment has made every attempt to ensure that the particulars and other information provided are as accurate as possible and they are not intended to amount to advice on which you should rely as being factually accurate. Full information which may be relevant to your decision regarding the property can be found on the property listing on [carterjonas.co.uk](http://carterjonas.co.uk) or a separately available material information sheet, and we would advise you to confirm the details of any material information prior to any offer being submitted. You should not assume that the property has all necessary planning, building regulations or other consents and Carter Jonas has not tested any services, facilities, or equipment. Any measurements and distances given are approximate only. Where Carter Jonas has been provided with a floorplan by a third party, we cannot guarantee that the floorplan has been measured in accordance with IPMS. Purchasers or prospective tenants must satisfy themselves of all of the aforementioned by independent inspection or otherwise. Our images only represent part of the property as it appeared at the time they were taken and do not represent the furnishings included; these are confirmed in a separate inventory. If you require further information, please contact us. \*Administration fees may apply depending on tenancy type. Please contact your local branch for this information.