



EDITH ROAD, LONDON, W14
£1,125,000

Carter Jonas

EDITH ROAD, LONDON, W14

A BEAUTIFUL 3 BEDROOM FIRST FLOOR FLAT LOCATED CLOSE TO BARONS COURT OFFERING IN EXCESS OF 1,000 SQ FT.

A spacious three bedroom first floor apartment in this popular mansion block close to Barons Court tube station. The property features a spacious west facing reception dining room with high ceilings, original features and wood flooring.

A principal bedroom with excellent built in storage and beautiful en-suite bathroom, double bedroom, single bedroom/study. A well equipped kitchen/breakfast room has granite worktops, and a further family bathroom offers a bath and separate shower.

Auriol Mansions is ideally located only 0.2 miles from Barons Court tube station (Piccadilly & District Lines) offering easy access to Heathrow, the West End and The City. West Kensington Underground Station (District Line) is 0.3 miles as well as Kensington Olympia Station (District and Overground Lines) is 0.5 miles. It is also within easy reach of shops and amenities of Westfield Shopping Centre and Kensington High Street. The property is ideally placed for some of West London's best schools.

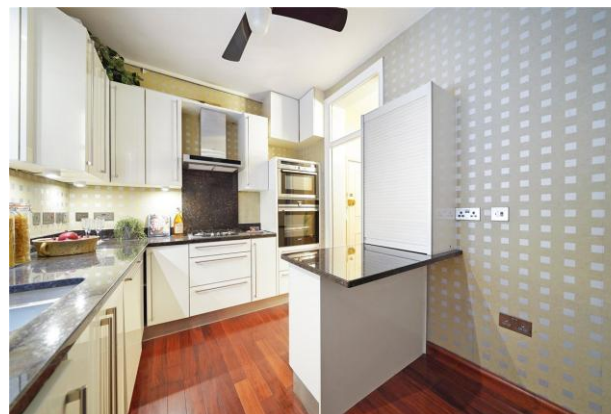
AMENITIES

- 3 Bedrooms
- 2 Bathrooms, 1 en-suite
- 1 Reception/Dining Room
- Great Location

TENURE Share of Freehold

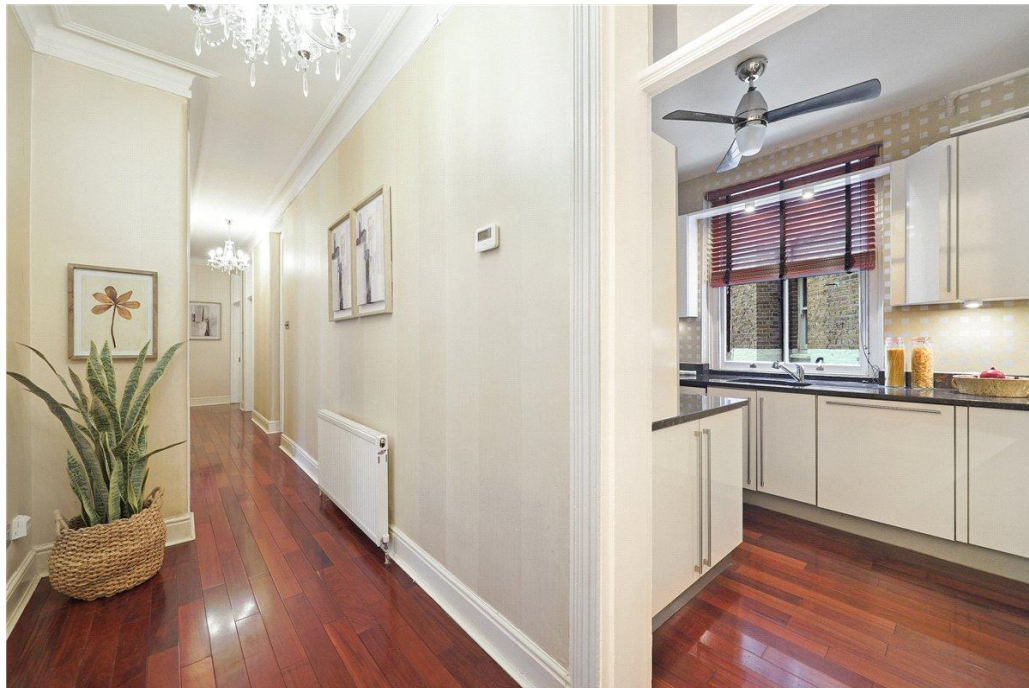
LOCAL AUTHORITY Hammersmith and Fulham

EPC BAND C



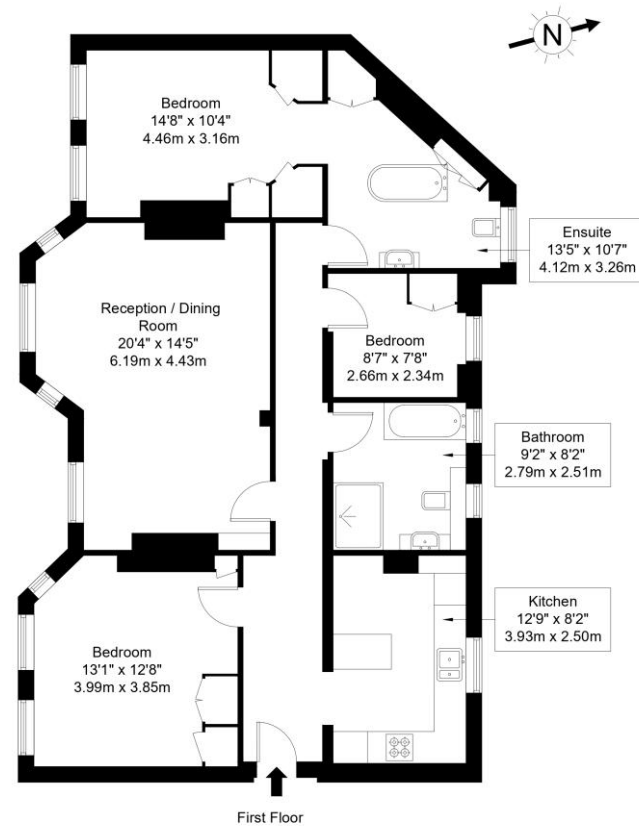
Classification L2 - Business Data





Edith Road, W14 0ST

Approx Gross Internal Area = 101.14 sq m / 1089 sq ft



Ref :

Copyright

BLEU
PLAN

The Floor plan is not to scale and measurements and areas shown are approximate and therefore should be used for illustrative purposes only. The plan has been prepared in accordance with the RICS code of Measuring Practice and whilst we have confidence in the information produced it must not be relied on. Maximum lengths and widths are represented on the floor plan. If there is any aspect of particular importance, you should carry out or commission your own inspection of the property.
Copyright @ BLEUPLAN

Score	Energy rating	Current	Potential
92+	A		
81-91	B		
69-80	C		
55-68	D		
39-54	E		
21-38	F		
1-20	G		

Fulham 020 7731 3333

bishopspark@carterjonas.co.uk
361 Fulham Palace Road, London, SW6 6TA

carterjonas.co.uk
Offices throughout the UK

Exclusive UK affiliate of
CHRISTIE'S
INTERNATIONAL REAL ESTATE

IMPORTANT INFORMATION

These particulars are for general information purposes only and do not represent an offer or contract or part of one. Carter Jonas or anyone in their employment has made every attempt to ensure that the particulars and other information provided are as accurate as possible and they are not intended to amount to advice on which you should rely as being factually accurate. Full information which may be relevant to your decision regarding the property can be found on the property listing on carterjonas.co.uk or, (including off market properties) on the brochure or a separately available material information sheet. We would advise you to confirm the details of any material information prior to any offer being submitted. You should not assume that the property has all necessary planning, building regulations or other consents and Carter Jonas has not tested any services, facilities or equipment. Any measurements and distances given are approximate only. Where Carter Jonas has been provided with a floorplan by a third party, we cannot guarantee that the floorplan has been measured in accordance with IPMS. Purchasers must satisfy themselves of all of the aforementioned by independent inspection or otherwise. Our images only represent part of the property as it appeared at the time they were taken and do not represent the furnishings included; these are confirmed in a separate inventory. If you require further information, please contact us.