



BROMPTON ROAD, KNIGHTSBRIDGE, SW3

£865 per week*

Carter Jonas

BROMPTON ROAD KNIGHTSBRIDGE, SW3

- First floor
- Period features
- Private balcony
- Unfurnished
- c..620 sq ft
- Knightsbridge & South Kensington tube stations

A spacious one double bedroom flat situated on the first floor of this period redbrick building on the Knightsbridge/Chelsea borders. Thanks to the high ceilings and large windows the flat benefits from excellent natural light. EPC rating: C

Located at the western end of Brompton Road, this building is convenient for the diverse and exclusive amenities of the area including Harrods, the Natural History Museum, the Royal Albert Hall and Hyde Park.

Reception with fully fitted open-plan kitchen, double bedroom, bathroom, balcony. Unfurnished.

Minimum term is 12 months

Holding deposit is 1 week's rent


Security deposit is 5 week's rent

Royal Borough of Kensington & Chelsea - Council tax band: D

For the latest information on broadband and mobile coverage, please visit the Ofcom website <https://checker.ofcom.org.uk/en-gb/broadband-coverage>.

For eligibility for resident parking permits, please refer to the RBKC website <https://www.rbkc.gov.uk/parking-transport-and-streets/visitor-parking-and-pay-phone/guide-parking> for further details.



Energy Efficiency Rating		
	Current	Potential
Very energy efficient - lower running costs		
(92+) A		
(81-91) B		
(69-80) C	72	75
(55-68) D		
(39-54) E		
(21-38) F		
(1-20) G		
Not energy efficient - higher running costs		
England, Scotland & Wales	EU Directive 2002/91/EC	



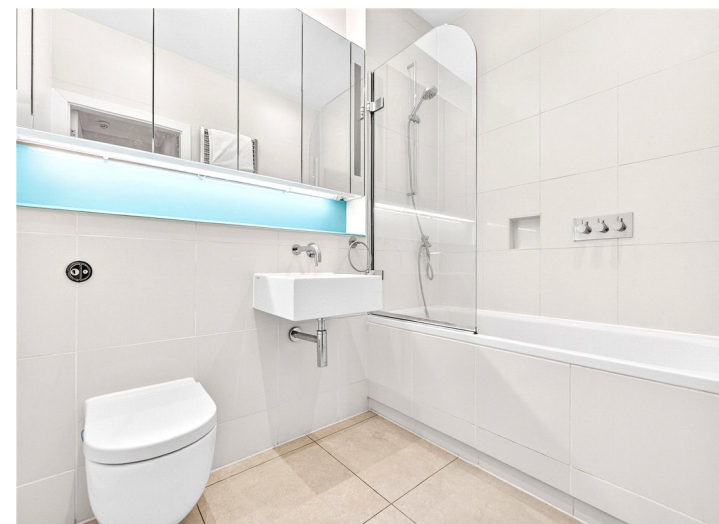
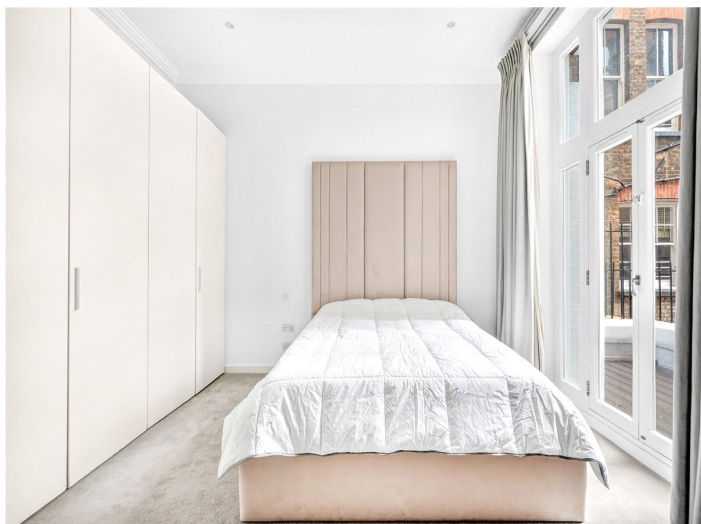
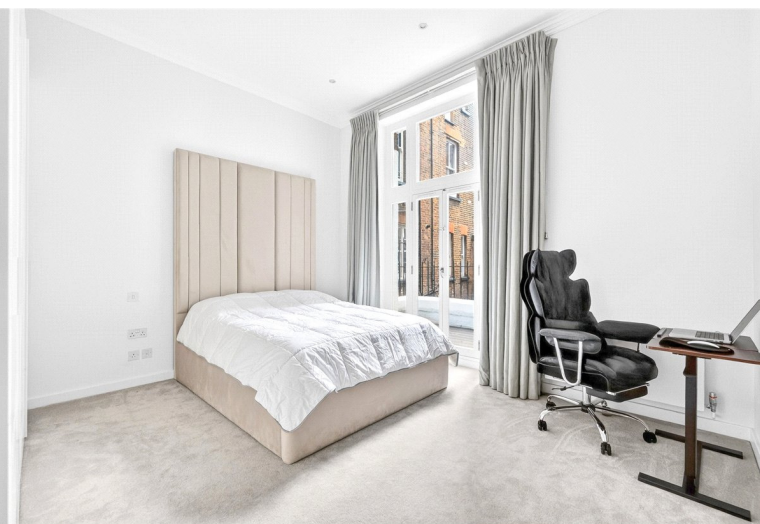
ADDITIONAL INFORMATION

Offers Available for a minimum term of 12 months longer terms will be considered

Viewing Strictly by appointment

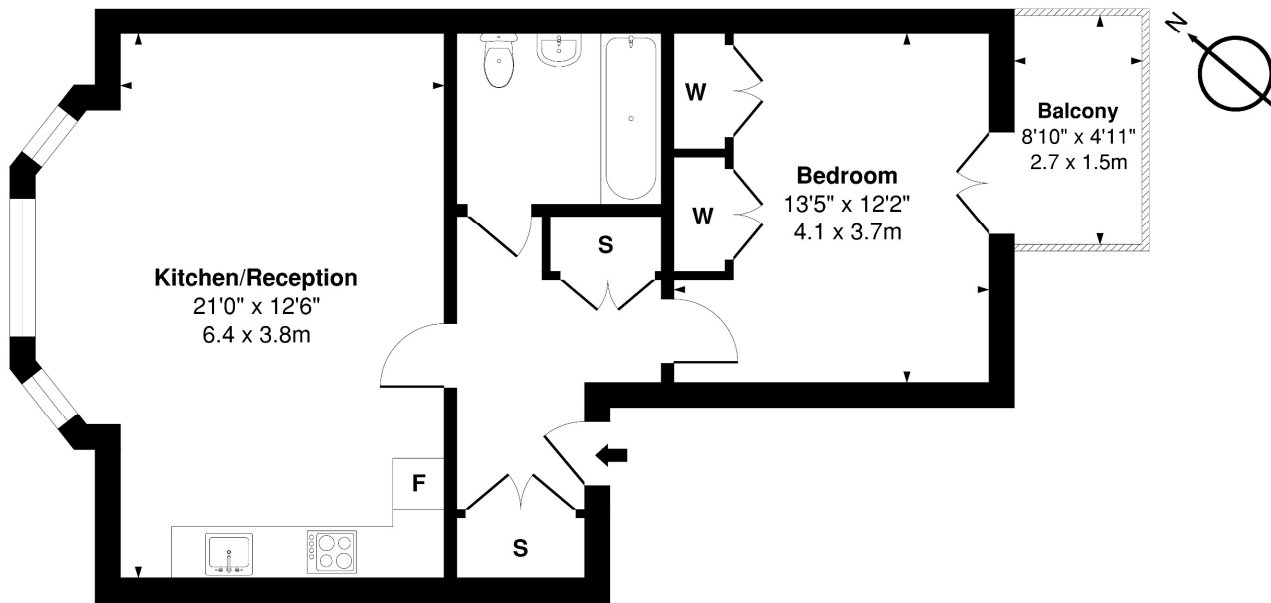
Local Authority RBKC - Council Tax Band D

Underground stations South Kensington & Knightsbridge



Brompton Road, SW3

Approx. Gross Internal Area 620 Sq Ft - 57.59 Sq M



First Floor

Floor Area 620 Sq Ft - 57.59 Sq M



Measured according to RICS IPMS2. Floor plan is for illustrative purposes only and is not to scale. Every attempt has been made to ensure accuracy of the floorplan shown, however all measurements, fixtures, fittings and data shown are an approximate interpretation for illustrative purposes only. 1 sq m = 10.76 sq feet.

ipaplus.com



T: 020 7584 7020

25-27 Harrington Road, London, SW7 3EU

E: chelsea.lettings@carterjonas.co.uk

A member of



Exclusive UK affiliate of

CHRISTIE'S
INTERNATIONAL REAL ESTATE

Classification L2 - Business Data

IMPORTANT INFORMATION

These particulars are for general information purposes only and do not represent an offer or contract or part of one. Carter Jonas or anyone in their employment has made every attempt to ensure that the particulars and other information provided are as accurate as possible and they are not intended to amount to advice on which you should rely as being factually accurate. Full information which may be relevant to your decision regarding the property can be found on the property listing on carterjonas.co.uk or a separately available material information sheet, and we would advise you to confirm the details of any material information prior to any offer being submitted. You should not assume that the property has all necessary planning, building regulations or other consents and Carter Jonas has not tested any services, facilities, or equipment. Any measurements and distances given are approximate only. Where Carter Jonas has been provided with a floorplan by a third party, we cannot guarantee that the floorplan has been measured in accordance with IPMS. Purchasers or prospective tenants must satisfy themselves of all of the aforementioned by independent inspection or otherwise. Our images only represent part of the property as it appeared at the time they were taken and do not represent the furnishings included; these are confirmed in a separate inventory. If you require further information, please contact us. *Administration fees may apply depending on tenancy type. Please contact your local branch for this information.