



GROSVENOR SQUARE, MAYFAIR, W1K
£3,600 per week*

Carter Jonas

FLAT 28, GROSVENOR SQUARE, MAYFAIR, LONDON, W1K

A three-bedroom apartment of approximately 1,808 square feet.

- 3 Bedrooms
- 3 Bath/Shower Rooms
- 24hr Concierge
- Double Reception Room
- Kitchen/Breakfast Room
- Guest cloakroom
- Utility Room
- Furnished or Unfurnished
- Communal Terrace
- Lift Access

THE PROPERTY

This sixth-floor apartment overlooking South Audley Street is located in a prestigious building centrally located in the heart of Mayfair. The apartment has been finished to a high standard and has the benefit of 24 hour concierge and a communal courtyard.

Mayfair is London's most fashionable destination. With London's finest buildings, largest concentration of luxury hotels, best restaurants, bars, shopping, open spaces and hidden treasures all nestled together in a beautiful village setting.

Nearest Tube: Bond Street / Marble Arch

NHA

The deposit will be £21,600 at a rental value of £3,600 (asking price)

Holding deposit = 1 weeks rent of £3,600

Deposit is 6 weeks rent (£3,600 pw = £21,600 deposit)



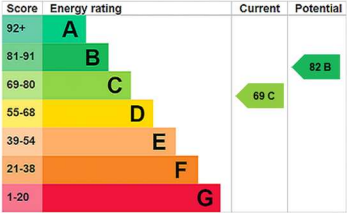
ADDITIONAL INFORMATION

Offers Available for a minimum term of 12 months longer terms will be considered

Viewing Strictly by appointment

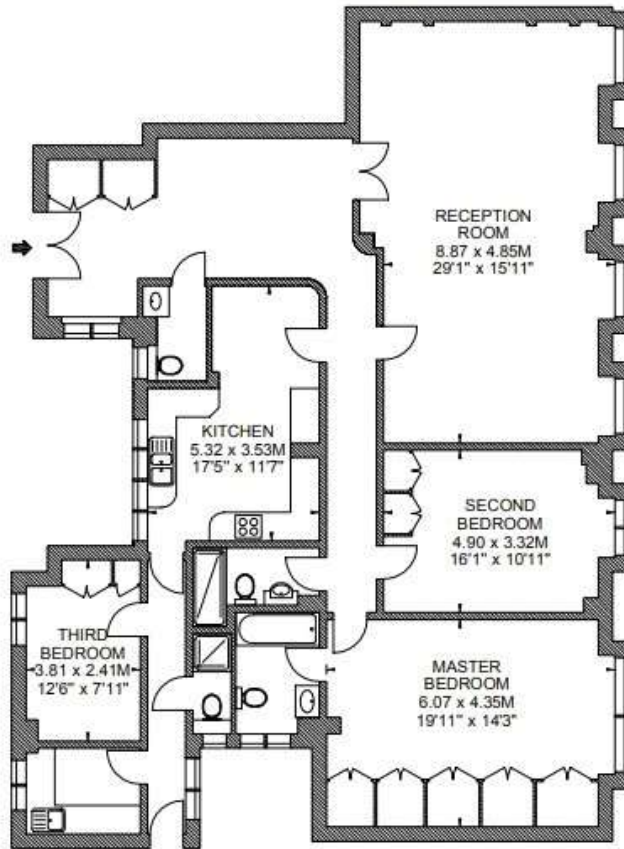
Local Authority Westminster County Council - Council Tax Band H

- Minimum Term 12 months
- Council Tax Band H
- Superfast Fibre to the Cabinet broadband and mobile coverage available
- Communal heating and hot water



Flat 28
Sixth Floor
Grosvenor Square, W1

Approximate gross internal area
168 sq m / 1808 sq ft



South
Audley
Street

Grosvenor Square

Scale 1:100

Scale floor plans produced by Mays Floorplans © . Tel 020 3397 4594
All measurements are maximum, and include wardrobes and window bays where applicable



T: 020 7493 0676

18 Davies Street, Mayfair, London, W1K 3DS

E: mayfair@carterjonas.co.uk

A member of



Exclusive UK affiliate of

CHRISTIE'S
INTERNATIONAL REAL ESTATE

Classification L2 - Business Data

IMPORTANT INFORMATION

These particulars are for general information purposes only and do not represent an offer or contract or part of one. Carter Jonas or anyone in their employment has made every attempt to ensure that the particulars and other information provided are as accurate as possible and they are not intended to amount to advice on which you should rely as being factually accurate. Full information which may be relevant to your decision regarding the property can be found on the property listing on carterjonas.co.uk or a separately available material information sheet, and we would advise you to confirm the details of any material information prior to any offer being submitted. You should not assume that the property has all necessary planning, building regulations or other consents and Carter Jonas has not tested any services, facilities, or equipment. Any measurements and distances given are approximate only. Where Carter Jonas has been provided with a floorplan by a third party, we cannot guarantee that the floorplan has been measured in accordance with IPMS. Purchasers or prospective tenants must satisfy themselves of all of the aforementioned by independent inspection or otherwise. Our images only represent part of the property as it appeared at the time they were taken and do not represent the furnishings included; these are confirmed in a separate inventory. If you require further information, please contact us. *Administration fees may apply depending on tenancy type. Please contact your local branch for this information.