



**CROOKHAM ROAD, LONDON, SW6**  
£2,100 per month\*

**Carter Jonas**

# CROOKHAM ROAD, LONDON, SW6 4EQ

- One double bedroom
- Reception room
- Fitted kitchen
- Bathroom
- Great storage
- Unfurnished
- EPC rating C

## LOCATION

Crookham Road is located as part of a small group of streets that run South off the Fulham Road which is moments from restaurants, cafés and shops that run along the Fulham Road itself. The closest underground station is Parsons Green (District Line, Zone 2) which is only 450 metres away. You can also catch regular buses from the Fulham Road towards Fulham Broadway, Chelsea and central London.

## THE PROPERTY

Presented to a very high standard throughout, the property comprises of a bright reception room with feature fireplace, a fully fitted kitchen with integrated appliances, good size double bedroom with fitted wardrobes and en-suite bathroom.

Offered on furnished basis.

Holding deposit: 1 week's rent

Security deposit: 5 weeks' rent

Council tax: Band D

Parking: on street via a permit

A very well presented one double bedroom flat on the raised ground floor of this period conversion in close proximity to Parsons Green underground station. EPC rating D.



---

## ADDITIONAL INFORMATION

Offers Available for a minimum term of 12 months longer terms will be considered

---

Viewing Strictly by appointment

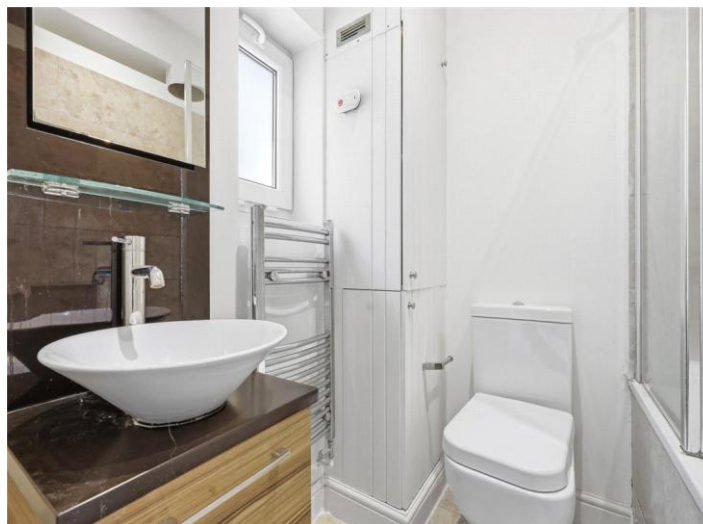
---

Local Authority Hammersmith and Fulham - Council Tax Band D

---

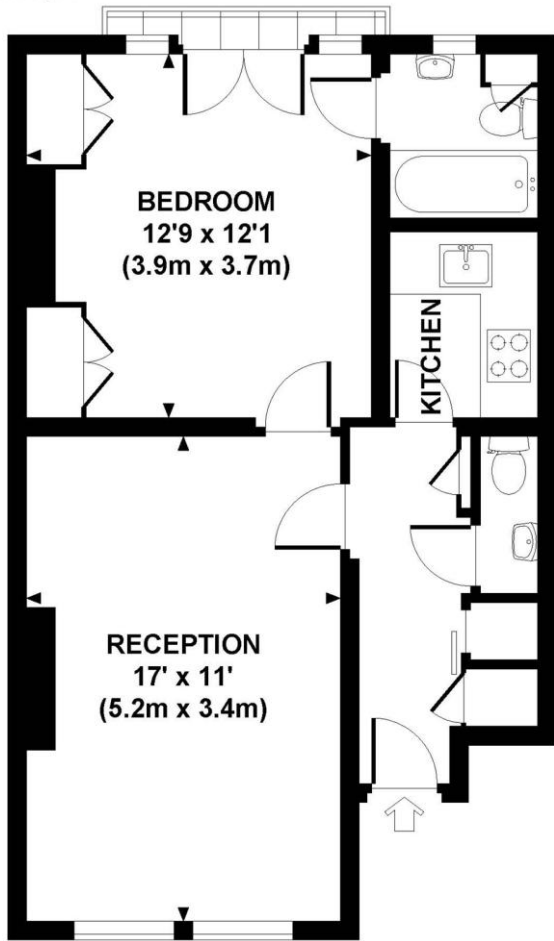
Directions Crookham Road is located south off the Fulham Road and is approx. 450 metres away from Parsons Green underground station (District Line, Zone 2)

---



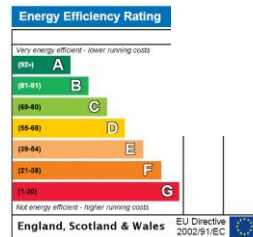
# CROOKHAM ROAD, SW6

Approx. gross internal area  
505 Sq Ft. / 47.0 Sq M.



**RAISED GROUND FLOOR**

djd All measurements are approximate and for illustration purposes only as defined by the RICS Code of Measuring Practice © 2013  
Dowling Jones Design www.dowlingjones.com 020 7410 9933



**T: 020 7751 8898**

361 Fulham Palace Road, London, SW6 6TA

E: fulhamlettings2@carterjonas.co.uk

A member of



Exclusive UK affiliate of

**CHRISTIE'S**  
INTERNATIONAL REAL ESTATE

### IMPORTANT INFORMATION

These particulars are for general information purposes only and do not represent an offer or contract or part of one. Carter Jonas or anyone in their employment has made every attempt to ensure that the particulars and other information provided are as accurate as possible and they are not intended to amount to advice on which you should rely as being factually accurate. Full information which may be relevant to your decision regarding the property can be found on the property listing on [carterjonas.co.uk](http://carterjonas.co.uk) or a separately available material information sheet, and we would advise you to confirm the details of any material information prior to any offer being submitted. You should not assume that the property has all necessary planning, building regulations or other consents and Carter Jonas has not tested any services, facilities, or equipment. Any measurements and distances given are approximate only. Where Carter Jonas has been provided with a floorplan by a third party, we cannot guarantee that the floorplan has been measured in accordance with IPMS. Purchasers or prospective tenants must satisfy themselves of all of the aforementioned by independent inspection or otherwise. Our images only represent part of the property as it appeared at the time they were taken and do not represent the furnishings included; these are confirmed in a separate inventory. If you require further information, please contact us. \*Administration fees may apply depending on tenancy type. Please contact your local branch for this information.