



**CROWN SQUARE, LONDON, SE1**  
£900,000

**Carter Jonas**

# CROWN SQUARE, LONDON, SE1

Situated on the second floor of this new development Designed by the award winning architects, Darling Associates. Located minutes walk from the banks of the River Thames and Tower Bridge, the apartment has been finished to the highest specification including Miele kitchen appliances, under floor heating, comfort cooling and home automated system for lighting and blind control. The apartment also benefits from 24h concierge, swimming pool, sauna and gym.

Southwark, in common with much of the south bank of the Thames is generally an area of mixed development. Located within easy walking distance of the City and the West End of London it has become a major business centre with many national and international corporations situated alongside residential developments, shops, restaurants, galleries and bars. The Shard skyscraper, Tate Modern art gallery, Imperial War Museum, Shakespeare's Globe Theatre, and Borough Market are but a few of the attractions located within the borough.

Nearest Tube: Tower Bridge / Waterloo / Borough

## AMENITIES

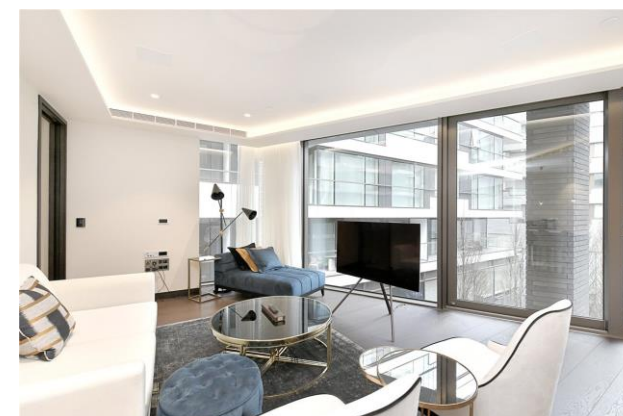
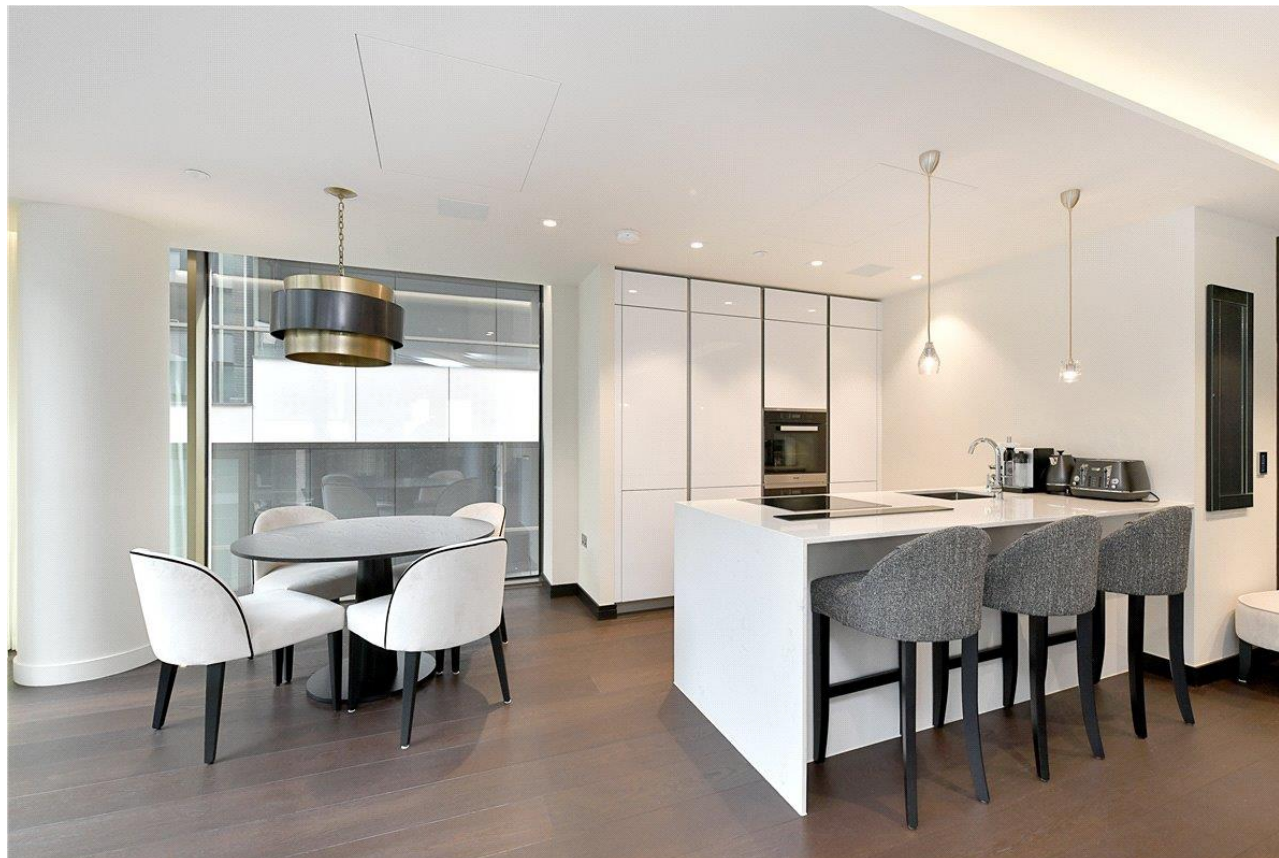
- 1 Bedroom
- Open plan kitchen / reception room
- 2 Bathrooms
- Lift
- Concierge
- Swimming pool and Gym
- Sauna

**TENURE** Leasehold – 985 years approx. remaining

**LOCAL AUTHORITY** Southwark County Council

**EPC BAND** C

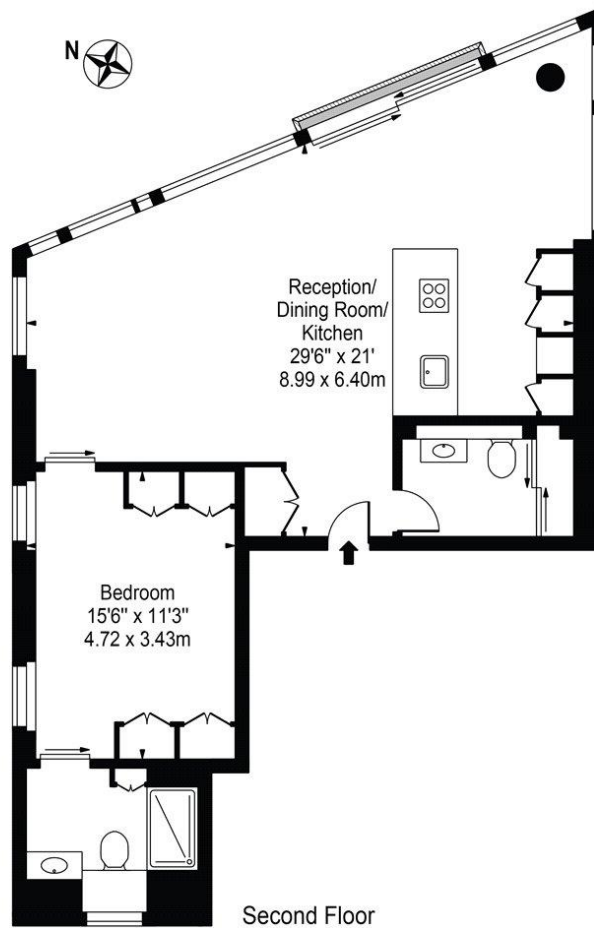
**A ONE BEDROOM APARTMENT OF 825 SQUARE FEET. THE APARTMENT BENEFITS FROM 24H CONCIERGE, SWIMMING POOL, SAUNA AND GYM.**





# Hanover House

Approx. Gross Internal Area 825 Sq Ft - 76.65 Sq M



For Illustration Purposes Only - Not To Scale

This floor plan should be used as a general outline for guidance only and does not constitute in whole or in part an offer or contract.  
Any intending purchaser or lessee should satisfy themselves by inspection, searches, enquiries and full survey as to the correctness of each statement.  
Any areas, measurements or distances quoted are approximate and should not be used to value a property or be the basis of any sale or let.

Mayfair 020 7493 0676

mayfair@carterjonas.co.uk  
18 Davies Street, Mayfair, London, W1K 3DS

carterjonas.co.uk  
Offices throughout the UK

Exclusive UK affiliate of  
**CHRISTIE'S**  
INTERNATIONAL REAL ESTATE

### IMPORTANT INFORMATION

These particulars are for general information purposes only and do not represent an offer or contract or part of one. Carter Jonas or anyone in their employment has made every attempt to ensure that the particulars and other information provided are as accurate as possible and they are not intended to amount to advice on which you should rely as being factually accurate. Full information which may be relevant to your decision regarding the property can be found on the property listing on carterjonas.co.uk or, (including off market properties) on the brochure or a separately available material information sheet. We would advise you to confirm the details of any material information prior to any offer being submitted. You should not assume that the property has all necessary planning, building regulations or other consents and Carter Jonas has not tested any services, facilities or equipment. Any measurements and distances given are approximate only. Where Carter Jonas has been provided with a floorplan by a third party, we cannot guarantee that the floorplan has been measured in accordance with IPMS. Purchasers must satisfy themselves of all of the aforementioned by independent inspection or otherwise. Our images only represent part of the property as it appeared at the time they were taken and do not represent the furnishings included; these are confirmed in a separate inventory. If you require further information, please contact us.