



MONTAGU SQUARE, LONDON, W1H
£5,000 per month*

Carter Jonas

FLAT 1 BRYMON COURT, MONTAGU SQUARE, LONDON, W1H 2LH

Three-bedroom lateral apartment, suitable for three sharers and located on the prestigious Montagu Square.

- Suitable for sharers
- Three bedrooms
- Two bathrooms
- Kitchen
- Communal gardens
- Guest WC
- 847 sq. ft.

THE PROPERTY

This beautifully presented three-bedroom apartment is situated in a highly sought-after garden square.

It offers generous living space, comprising three bedrooms, two modern bathrooms, a separate guest WC, a reception room, a separate kitchen, and plenty of built-in storage.

The property holds an HMO licence and is suitable for three sharers.

Brymon Court is a secure building located in the prestigious Montagu Square, widely regarded as one of London's most elegant garden squares. It is conveniently within easy walking distance of Marble Arch (Central line) station, providing excellent transport links. Additionally, the delightful boutiques, independent cafés, bars, and renowned restaurants of Marylebone High Street are close by. For those who enjoy the outdoors, the magnificent Regent's Park offers spacious green areas nearby.

Holding deposit is 1 week's rent = £1,153.84 (at asking price)

Security deposit is 6 week's rent = £6,923.07 (at asking price £1,153.85pw)

Minimum term 12 months

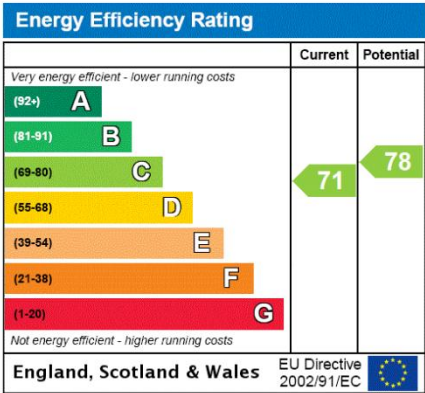
Council Tax Band H

For the latest information on broadband and mobile coverage, please visit [/checker.ofcom](https://checker.ofcom.gov.uk/) for the most up-to-date details.

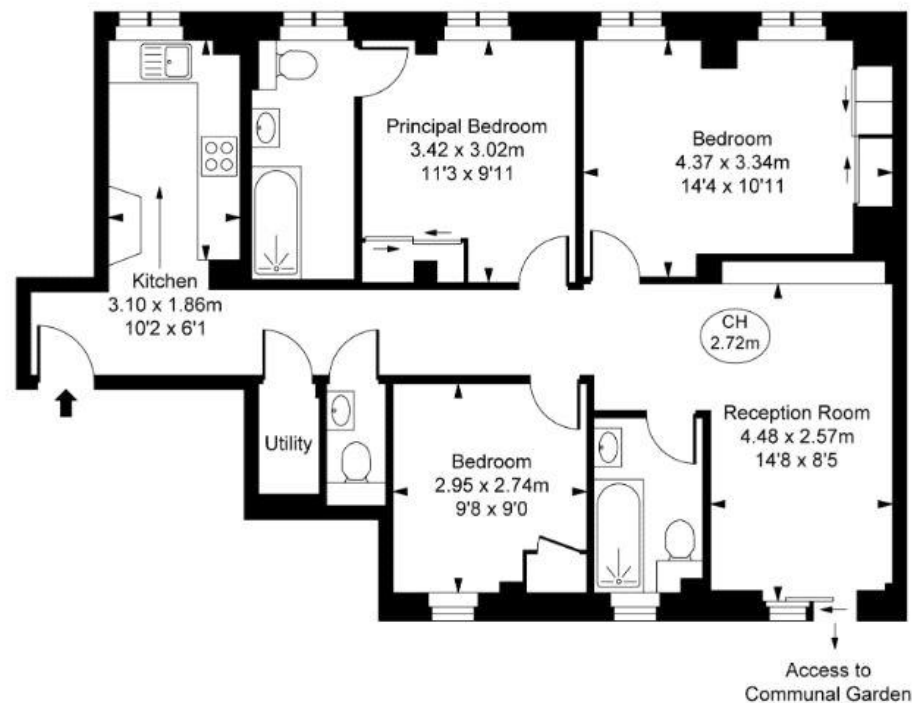


ADDITIONAL INFORMATION

Offers	Available for a minimum term of 12 months longer terms will be considered
Viewing	Strictly by appointment
Local Authority	Westminster City Council - Council Tax Band H



Brymon Court,
Montagu Square, W1H
Approximate Gross Internal Area
78.65 sq m / 847 sq ft
(CH = Ceiling Heights)



Lower Ground Floor

This plan is not to scale. It is for guidance and not for valuation purposes.
All measurements and areas are approximate only, and have been prepared in accordance with the current edition of the RICS Code of Measuring Practice.
© Fulham Performance

T: 020 7486 8866

37 New Cavendish Street, London, W1G 9TL

E: marylebone.lettings@carterjonas.co.uk

A member of



Exclusive UK affiliate of

CHRISTIE'S
INTERNATIONAL REAL ESTATE

Classification L2 - Business Data



IMPORTANT INFORMATION

These particulars are for general information purposes only and do not represent an offer or contract or part of one. Carter Jonas or anyone in their employment has made every attempt to ensure that the particulars and other information provided are as accurate as possible and they are not intended to amount to advice on which you should rely as being factually accurate. Full information which may be relevant to your decision regarding the property can be found on the property listing on carterjonas.co.uk or a separately available material information sheet, and we would advise you to confirm the details of any material information prior to any offer being submitted. You should not assume that the property has all necessary planning, building regulations or other consents and Carter Jonas has not tested any services, facilities, or equipment. Any measurements and distances given are approximate only. Where Carter Jonas has been provided with a floorplan by a third party, we cannot guarantee that the floorplan has been measured in accordance with IPMS. Purchasers or prospective tenants must satisfy themselves of all of the aforementioned by independent inspection or otherwise. Our images only represent part of the property as it appeared at the time they were taken and do not represent the furnishings included; these are confirmed in a separate inventory. If you require further information, please contact us. *Administration fees may apply depending on tenancy type. Please contact your local branch for this information.