



FLAT 1, 21 VINEYARDS
Bath

Carter Jonas

FLAT 1, 21 VINEYARDS, BATH, SOMERSET, BA1 5NA

A UNIQUE AND CENTRAL GRADE II LISTED MAISONETTE PERFECT FOR INVESTMENT OR HOLIDAY LETS.

– Bath City Centre 0.5 miles
– Bath Spa Railway Station 0.7 miles (London Paddington from 76 minutes and Bristol Temple Meads from 11 minutes)

Reception hall • Kitchen • Two reception rooms • Two bedrooms • Bathroom • Vault storage • W.C.

DESCRIPTION

A lovely two-bedroom split-level maisonette with a private entrance, located on Vineyards, a short walk to Bath City Centre. Entering on the ground floor, you will find the kitchen on your left-hand side; which offers a mixture of wall and base units, sink, integrated oven and hob, an extractor hood, and space for a washing machine and under-counter fridge. The shower room with a low-level WC and hand basin is also on this level.

A central staircase leads to the first floor, where there is a double bedroom with built-in storage, as well as a second bedroom. The basement level, accessed on the central staircase, offers two separate reception rooms on either side of the staircase, offering versatile space. There is also 'The Vault' which is a low-ceilinged storage area, as well as a WC room within.

SITUATION

The property is in an excellent central Bath position, within one of the most historic and architecturally renowned Georgian areas in Bath just around the corner from The Assembly Rooms, The Circus and Royal Crescent. The city centre is directly on your doorstep with an amazing array of shopping, restaurants, bars, cafes, museums, galleries, classic historic architecture and Waitrose is approximately 100 metres along the road. There are excellent communications and approximately 10 miles from Junction 18 of the M4. There are high-speed train services from Bath Spa Railway Station to London Paddington (from 76 minutes).



ADDITIONAL INFORMATION

Tenure: Share of freehold (999 years from 29th September 2001) holiday lets are permitted.

Service Charge: No annual service charge - property forms part of the freehold with one other property, so any works/insurance are split on a 50/50 basis when required.

Ground Rent: £90 per annum

Services: Mains electricity, water and drainage.

Council Tax: Band C

Local Authority: Bath and North East Somerset Council.

EPC: Band F

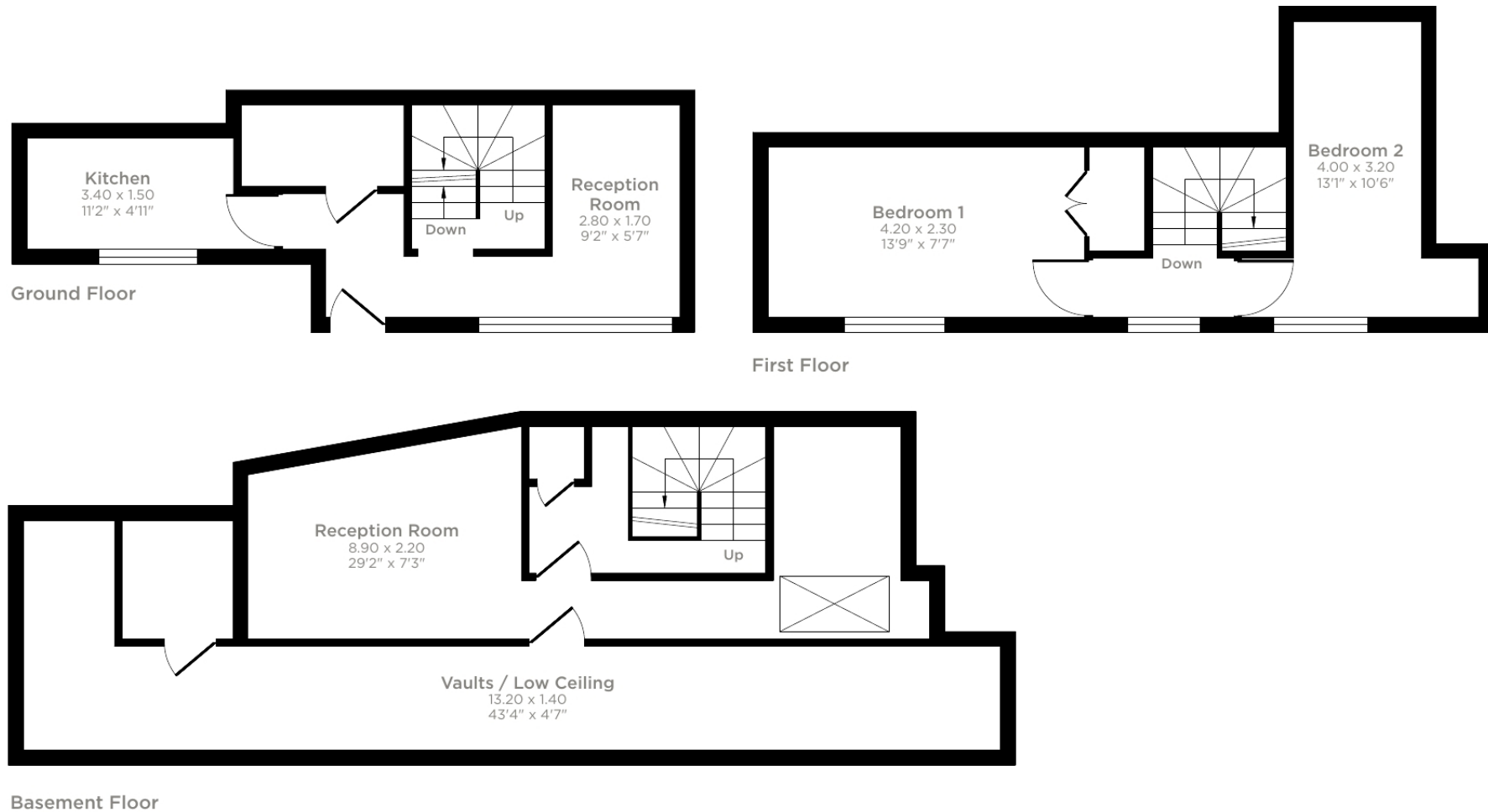
Viewings: Strictly by appointment with Carter Jonas.



Vineyards, Bath, BA1

Approximate Area = 1004 sq ft / 93.2 sq m

For identification only - Not to scale



This floor plan was constructed using measurements provided to ©n1che.com 2025 by a third party.
Produced for Carter Jonas. REF: 1383323

Bath 01225 747250

bath@carterjonas.co.uk

5-6 Wood Street, Bath, BA1 2JQ

carterjonas.co.uk

Offices throughout the UK

Exclusive UK affiliate of

CHRISTIE'S
INTERNATIONAL REAL ESTATE

IMPORTANT INFORMATION

These particulars are for general information purposes only and do not represent an offer of contract or part of one. Carter Jonas has made every attempt to ensure that the particulars and other information provided are as accurate as possible and are not intended to amount to advice on which you should rely as being factually accurate. You should not assume that the property has all necessary planning, building regulations or other consents and Carter Jonas have not tested any services, facilities or equipment. Any measurements and distances given are approximate only. Purchasers must satisfy themselves of all of the aforementioned by independent inspection or otherwise. Although we make reasonable efforts to update our information, neither Carter Jonas LLP nor anyone in its employment or acting on its behalf makes any representations warranties or guarantees, whether express or implied, in relation to the property, or that the content in these particulars is accurate, complete or up to date. Our images only represent part of the property as it appeared at the time they were taken. If you require further information please contact us.